

---

**Air Conditioning**

---

**Brake**

---

**Bearing**

---

**Clutch & Transmission**

---

**Cooling System**

---

**Engine**

---

**Exhaust**

---

**Hose & Pipe Disconnect Tools**

---

**Fuel**

---

**Lubrication**

---

**Suspension & Steering**

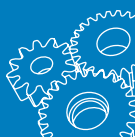
---

**Tyre & Wheel**

---

# MECHANICAL SERVICE





## AIR CONDITIONING

**308400**

### A/C Compressor Clutch Remover Kit

- Removes and replaces air conditioning compressor clutch hubs
- Kit contains disc type and nut type removers
- Suitable for popular compressor models including: FS6, C171, 6P and 148GM R4 & A6, HR-6, DA-6 & V5 Sanden SD505, 507, 508, 510, 575, 708 & 709
- Operator manual included

Part No. (Spare)	Description
308401	Remover & installer Delphi Harrison A6/R4 SAE
308402	Remover & installer Delphi Harrison DA6V5 HR6/R4, metric
308403	Remover clutch end plate Tecumseh HR980
308404	Remover clutch end plate Sanden SD5 & 7



308401



308402



308403



308404



**308387**

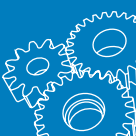
### A/C Compressor Seal & Bearing Service Tool Set

- Kit contains a complete tool set for replacing air conditioning seals, clutches and clutch bearings
- Suits: Diesel Kiki (Zexel), Hitachi, Mitsubishi, Nippondenso, Seiko-Seiki and Sanden
- Professional 33 piece set



#### Contents

York seal remover & installer	Seal remover & installer	Seal seat remover	Diesel kiki bearing drive
Sanden 505 bearing & pulley installer	Seal protector sleeve	Seal seat installer	Clutch bearing installer 6"
Sanden 505 seal protector sleeve	Clutch plate installer	Pulley arbor	Thrust bolt shim gauge
Diesel kiki plate remover	Mitsubishi seal remover & installer	Nippondenso clutch plate remover	Universal feeler gauge set
Diesel kiki seal remover & installer	Hitachi spanner plug remover & installer	Pulley body	Sanden 505 seal seat remover
Diesel kiki seal seat remover & installer	Mitsubishi seal seat remover	Pulley bearing remover & installer	Mitsubishi/sanden clutch plate remover
Diesel kiki nut remover	Mitsubishi seal remover lock sleeve	Bearing & pulley installer	Universal clutch holding tool
Diesel kiki pulley puller pilot	Sanden plate installer	Compressor holding fixture	Pulley removal jaws
Diesel kiki retainer ring installer			



**308388**

## A/C Seal & Clutch Tool Set

- Kit contains a complete tool set for replacing Diesel seals and clutches
- Suits: standard Diesel Kiki and York compressor models DSK12 and DSK15
- Professional 30 piece set supplied in blow mould case

### Contents

Internal snap-ring pliers	Seal remover & installer
Seal seat remover	Lock nut remover & installer
O-ring seal sleeve remover	Pulley puller pilot
Seal seat installer	Snap-ring, o-ring, felt installer
Bearing & pulley installer	Clutch plate installer
Clutch plate remover	Pulley puller arbor
Compressor holding fixture	Clutch bearing installer 6"
External snap-ring pliers	Thrust bolt shim gauge
Internal snap-ring pliers	Universal clutch holding tool
Valve plate remover	Universal puller body
Universal feeler gauge set	Pulley removal jaws
Pulley bearing driver	



**308389**

## A/C Clutch Hub Puller & Installer Kit

- Kit contains a complete set of A/C compressor clutch hub pullers and installers for GM, Ford, Chrysler and imports
- Set includes a removing flange, forcing screws and adaptor assembly to remove and install most clutch hubs plus a compressor identification chart
- Suits: GM-Harrison DA-6, HR-6 and V5, A-6 and early R4, R4; Nippon Denso Ford/Chrysler A590, C171 & FS-6, For FS-6 W/Special 24mm x 2.0, New Style, Sanden, York/Tecumesh HR980, Zetex / Mitsubishi CH Series
- Professional 13 piece set



**308386**

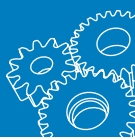
## A/C Clutch Hub Puller & Installer Kit

- Kit contains a complete set of A/C compressor clutch hub pullers and installers, removing flange, forcing screws and adaptor assembly to remove and install most clutch hubs
- Suits: GM-Harrison DA-6, HR-5, V-5, A-6, early R4; Nippon Denso Ford/Chrysler A590, C171, FS-6, 6P148A (new style) Sanden and Sankyo; York/Tecumseh HR980; Zexel/Mitsubishi CH series
- Set also includes an orifice tube service kit. This handy tool works on GM and Ford vehicles and comes with an extender body for 1985 onward Ford models, adaptor for 1989-91 GM : "J", "L", and "N" cars and an adaptor for 1991 onward GM "C" and "K" trucks with GM#3096068 orifices
- Professional 18 piece set

### Contents

Clutch plate removal arbor	Clutch plate installer
Clutch plate puller remover	Clutch plate remover
Puller plate & arbor	



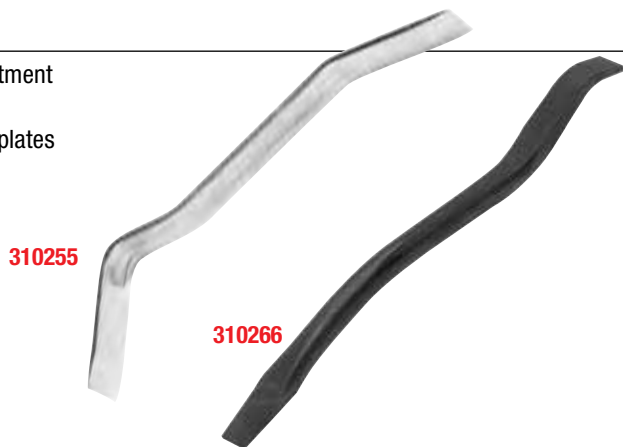


## BRAKE

### Brake Adjusting Tools

- For use when removing, installing or carrying out brake lining adjustment on drum brakes
- Perfectly shaped during manufacture to probe drum brake backing plates during adjustment
- Suitable for screw and start type adjusters
- Available in long and short lengths

Part No.	Overall Length
<b>310255</b>	185mm
<b>310266</b>	124mm



### 310261

### Brake Bleeder Kit One Man

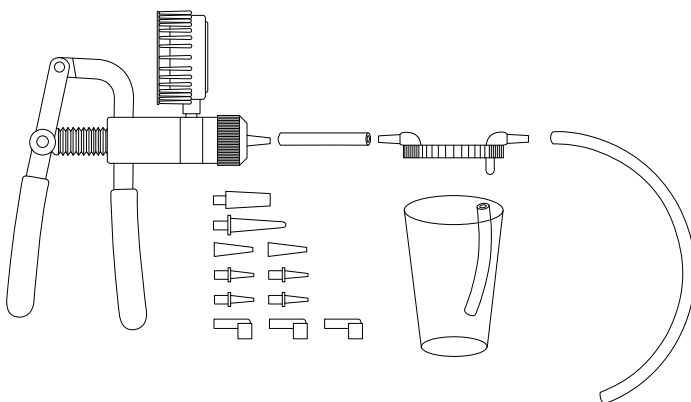
- Designed for carrying out one man brake bleeding operation on passenger cars, light commercials and motorcycles
- Truly one man operation with no assistance needed
- Easy to use kit includes powerful magnet to secure bottle hands free, three nylon adaptors to fit all brakes and plastic bottle for discharged fluid collection



### 310012

### Brake Bleeder Pump Kit Vacuum

- Multi-purpose kit designed to test and service a number of automotive system functions including one-man brake bleeding, vacuum testing and pressure testing fuel systems
- Suitable for passenger vehicles and light commercials where testing for vacuum or fluid sealing is required
- Includes instruction manual to assist in servicing and diagnosis



**310013**  
Vacuum/Pressure Pump



**310014**  
Bleed Adaptors Pack



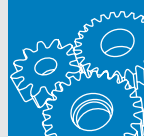
**310015**  
Connectors Pack



**310016**  
Connection Pipes Pack



**310017**  
Reservoir Bottle and Pipe



## Brake Bleeder & Auto Filler Unit Vacuum, Pneumatic

- Turns brake and clutch system bleeding into a genuine one man operation
- Simplifies brake fluid changing to an easy, quick task
- Light weight (<1kg) and portable
- Pneumatic extractor is non-spark
- Fixing valve and safety cup for automatic cut-off extractor
- Supplied with 1 metre silicone hose with universal rubber adaptor suitable for most vehicles brake oil bleeder fittings



### Vacuum Brake Bleeder

- Stand alone brake bleeder that uses vacuum to “suck” the fluid out
- Removes brake fluid from the master cylinder by sucking it out of the filler
- Fast fluid changes as not all the fluid needs to be bled via a bleed nipple
- No need to have a pressure tight seal on those difficult to get at master cylinder reservoirs
- By “sucking” the fluid away risk of sudden spillage is significantly reduced
- Uses standard workshop compressed air supply to generate vacuum
- Light, portable and single handed operation

### Auto Filler Unit

- This handy unit attaches directly to the top of the reservoir (space permitting) ensuring the reservoir does not run dry during the bleeding process

Part No.	Description
<b>305093</b>	Vacuum brake bleeder & auto filler unit
305093A	Replacement silicone hose assembly, 1m

Specifications	
<b>Capacity</b>	2 Litres / 2000cc
<b>Air Inlet</b>	¼” NPT
<b>Avg. Air Con</b>	2 CFM
<b>Working Pressure</b>	40 - 170 PSI
<b>Temperature Range</b>	-19 to +60 (°C)
<b>Silicone Hose</b>	1 Metre

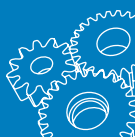


## **310276**

### Brake Pedal / Steering Wheel Holder

- Multi purpose tool, ideal for holding steering wheels firmly in place during wheel alignment testing
- May be used for toe in checks and toe out on turns measurement
- Trigger controlled mechanism with a thumb lock release
- Also doubles as a pedal depressor to facilitate one-man brake or clutch bleeding along with cable setting on accelerator pedals etc.





## 310400

### Brake Pressure Test Kit Universal

- Comprehensive brake system pressure test kit used for testing and diagnosing hydraulic system faults
- Tests for problems such as leaks and restrictions within the hydraulics of both anti-lock and conventional braking systems
- Easily caters for non-ABS systems, ABS systems, Teves systems and Bosch systems using its two 3000 PSI (200 Bar) pressure gauges and comprehensive adaptation system
- Includes operators manual



#### Contents

Part No.	Item Code	Description
310414		Gauge/manifold/hose assembly
310401	1	Swivel fitting 45°
	2	Swivel fitting 90°
	3	Adaptor pressure
	4	Adaptor teves
310405	5	Bleeder screw 7/16"
	6	Bleeder screw 7/16"
	7	Bleeder screw 3/8"
	8	Bleeder screw 5/16
310410	9	Bleeder screw 1/4"
	10	Bleeder screw M10 x 1.5
	11	Bleeder screw M10 x 1.0
	12	Bleeder screw M8 x 1.25
	13	Bleeder screw M7 x 1.0

## 310350

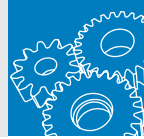
### Brake Caliper Piston Wind Back Kit

- Comprehensive kit for returning the brake caliper piston to the resting position during removal, installation or carrying out service repairs to the disc brake pads
- Large T-bar handle for high torque, low effort operation
- Suits most popular modern vehicles including Ford, GM, Honda, Mazda, Mitsubishi, Nissan, Saab, Subaru, Toyota, VAG
- 11 piece set



#### Contents

Part No.	Description
310361	Forcing screw body
310351	Forcing plate
310358	Stepped adaptor push back: <b>BMW, GM</b> Commodore, <b>Honda, Jaguar, Mitsubishi, Mercedes Benz, Nissan, Toyota</b>
310352	Drive adaptor wind back: <b>Ford</b> Fairlane ZJ, LTD FC, Falcon XB, XC, XD, <b>GM Holden</b> HJ, HX, HZ
310353	Drive adaptor wind back: <b>Ford</b> Falcon EA, EB, Fairlane NA, NB, LTD, DA
310354	Drive adaptor wind back: <b>Ford</b> Falcon- XE, XF, Fairlane ZK, LTD FD
310355	Drive adaptor wind back: <b>Mitsubishi</b> Magna - TM, TN, <b>Nissan</b> Pulsar.
310356	Drive adaptor wind back: <b>Nissan</b> Pintara, Syklone.
310357	Drive adaptor wind back: <b>Ford</b> Telstar, Laser, Focus, <b>Mazda</b> 323, 626, <b>Mitsubishi</b> Starion, Scorpion, Galant, Lancer
310360	Drive adaptor wind back: <b>Ford, Mazda, Saab</b>
310362	Drive adaptor wind back: <b>Ford, Nissan, Peugeot, Rover, Toyota, VAG</b>



**310000**

## Brake Caliper Guidance Thread Repair Kit

- For the repair of guide pin threads in the wheel bearing housing
- Guide pin threads are frequently damaged during disc pad replacement
- Damaged threads are professionally repaired with heavy duty, rust proof, high grade steel threaded bushes
- Contains:
  - Ten replacement bushes with copper ring M9 x 1.25
  - Special core drill bit
  - Special tap M9 x 1.25
  - 7mm hex key



**310375**

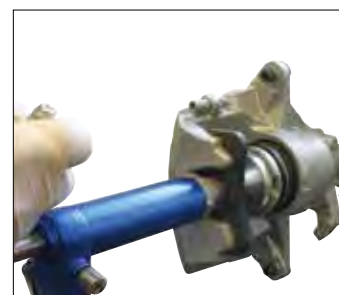
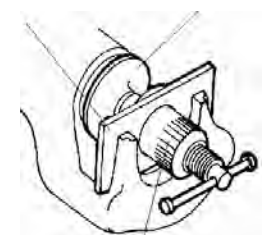
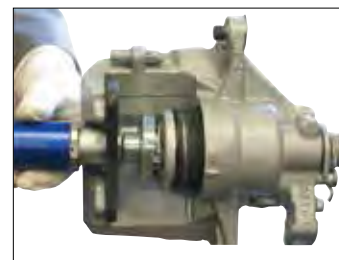
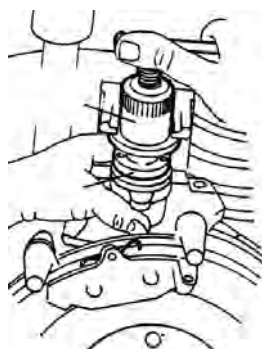
## Brake Caliper Piston Wind Back Kit Pneumatic

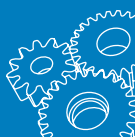
- Professional trade kit suitable for both right and left handed application
- Pneumatic operation allows for easy wind back to return brake caliper piston to the resting position during removal, installation or service repairs to the disc brake pads
- Air operated ram applies pressure to the caliper position while the handle is rotated by hand
- Easy to use – works on standard workshop air supply
- Suitable for use on both wind back and push back pistons



Item Ref.	Application
1	GM most 2 1/2" diameter pistons
2	Citroen XM – Xantia (F&R), Honda
3	Audi (F), Fiat, Alfa Romeo (F), Ford Fiesta (F), Isuzu (F), Jaguar XJ6, XJ40 (F&R), BMW 318is, 320i, 325TD, 518i, 525i & 1x, 740i, 850ci, M5 (F), Mercedes Benz 190, 200, 300, 400, 500 series (F), Mitsubishi Colt (F), Toyota Camry (F), Volvo, Volkswagen Passat, Golf GTI (F)
4	Ford Australia and NZ, Mazda (R), Saab 9000 (R), Toyota, Fiat, Alfa Romeo 164 2.0 (R), Honda Prelude, CRS 16i
5	3/8" adaptor
6	Nissan Primera, Volkswagen Gold IV,
7	Audi 80, 90, V8 + 100, Coupe E (R), Subaru L + Z (R), Ford, Nissan Bluebird 1.8 Turbo, Silvia Turbo, Primera 2.0i LS/ GS/GSX (R), Peugeot, Toyota Celica, Corolla GT, MR2 (R), Volkswagen Golf Gti, Jetta Synchro, Jetta Gti 16v, Passat, Citroen, Alfa Romeo, Fiat, Honda, Jaguar, Renault, SAAB, Seat
8	GM most 1-7/8" diameter pistons
9	GM most 2-1/8" diameter pistons
A(Z)	Renault R21, Laguna (R)
E	Nissan Maxima, Ford
F(G)	Opel (R)
M	Ford Motors, Mini R68, Mazda 3
N	SAAB, Honda, Alfa Romeo, VAG
K	Citroen

F = Front, R = Rear





**310002**

## Brake Shoe Clip Remover

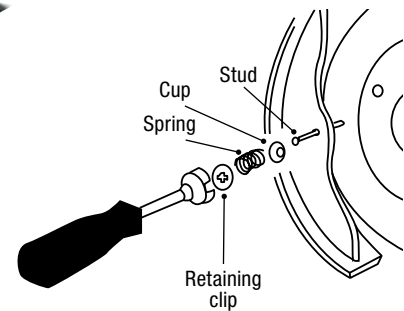
- For easy removal and installation of brake shoe hold down clips
- Simple to use. Push tool to depress brake clip and provide a quarter turn to disengage clip (reverse operation to install clip)



**310256**

## Brake Spring Compressor

- For removing and installing brake shoe retaining springs on vehicles with drum brakes
- Notched design for washers with ear tabs
- Knurled outer cone grip
- Bevelled cup fits most retaining spring sizes
- Moulded plastic handle



**310277**

## Brake Service Tool Kit

- Comprehensive kit used for the removal, installation or service repairs on drum brakes
- Designed for passenger vehicles and light commercials
- 7 piece set

### Contents

Item Ref.	Description
A	Brake spring pliers 330mm
B	Brake spring removal tool. Fits 5/8" diameter springs
C	Brake spring removal tool. Suitable for many imported vehicles
D	Brake spring removal tool
E	Brake spring removal tool
F	Brake adjusting spoon
G	Brake adjusting spoon



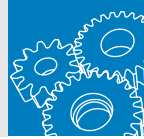
**310003**

## Disc Brake Caliper Tool

- Used to return the brake caliper piston to the resting position when removing, installing or carrying out service repairs to the disc brakes
- Operated with 1/2" square drive
- Diameter: 15mm
- Applications include Ford Falcon: EA/EB/ED and Ford Fairlane: NA/LTD/DA







**310264**

## Disc Brake Pad Remover

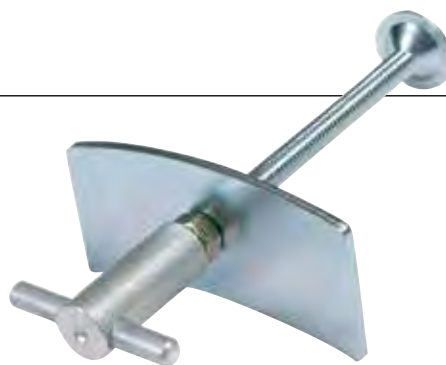
- Designed for the removal of disc brake pads
- Adjustable pins and hammer end allow for trouble free pad removal
- Body length: 200mm
- Extended length: 300mm



**310265**

## Disc Brake Pad Spreader

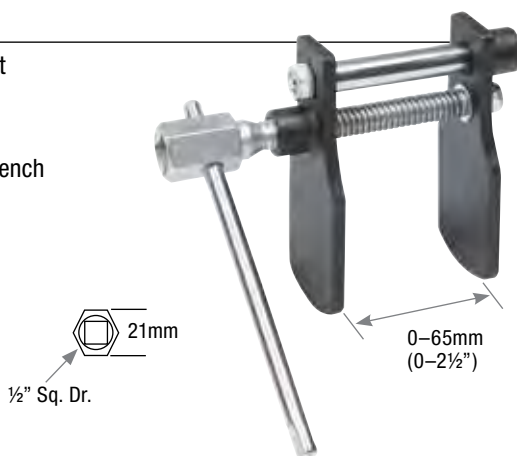
- Used to return the brake caliper piston to the resting position during removal, installation or service repairs to the disc brakes
- Threaded T-bar handle operation



**310001**

## Disc Brake Piston Spreader

- Essential tool for retracting the brake piston during pad replacement
- Chemically blackened steel spreader plates
- Suits most ATE, Bendix, Delco and Girling calipers
- T-Bar can also be used with ½" square drive ratchet, spanner or wrench
- Suits Alfa, Audi, Fiat, Ford, GM, Nissan, Peugeot, Porsche, Renault, Rover, Volkswagen

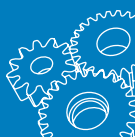


**310020**

## Disc Brake & Tyre Depth Gauge

- Simple and easy tool used to obtain measurements of either brake disc thickness or tyre depth
- Floating jaw assembly enables easy removal of caliper from disc while retaining the gauge reading
- Metric scale with 0.1mm graduations
- Robust aluminium construction
- Measuring range: 0-60mm





**310376**

## Caliper Piston Removal Kit

- Designed for caliper piston removal to allow easy piston seal replacement
- Enables frozen or seized caliper pistons to be removed or freed from caliper
- Three adaptor sizes provided with various working ranges
- Simply insert tool into caliper, adjust adaptor to size and turn handle to release piston

### Specifications

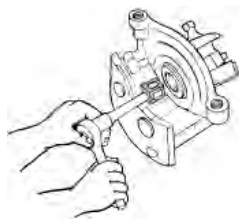
Part	Working Range	Thickness
Head	25–35mm	–
Adaptor A	35–45mm	5mm
Adaptor B	45–55mm	10mm



**310269**

## Disc Brake Piston Cube Rear

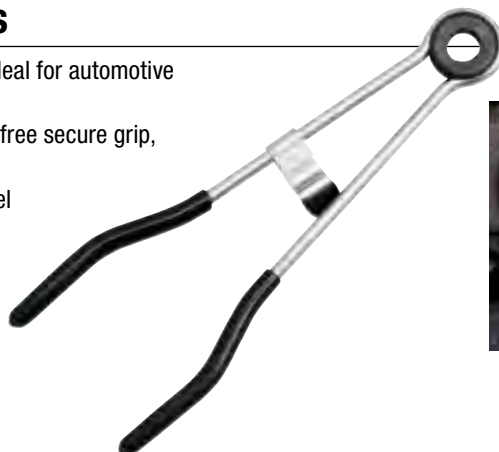
- Use to return the brake caliper piston to the resting position when removing, installing or carrying out service repairs to the disc brakes
- Fits 6 different cavity configurations and most popular vehicles
- Operated with 3/8" square drive ratchet



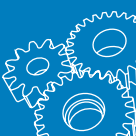
**301449**

## Brake Line Crimping Pliers

- Designed to shut off (restrict) flow of fluid, ideal for automotive applications including brake and clutch lines
- Features O-ring design to provide a damage free secure grip, snap lock to hold the plier into position
- Manufactured from chrome treated alloy steel



Hose Capacity	Overall Length
5–10mm	200mm



**301026**

**Brake/Fuel Line Crimping Pliers**

- Designed to shut off (restrict) flow of fluid, ideal for automotive applications including use on fuel, vacuum or brake hoses
- Features rounded jaws to provide a damage free secure grip, ring lock to hold the plier in the selected position
- Manufactured from chrome treated alloy steel

Hose Capacity	Jaw Opening	Jaw Width	Overall Length
5–12mm	0–14mm	6mm	165mm



**301027**

**Hose Pinchers**

- Anvil style hose pinching clamps ideal for use on fuel, vacuum or brake hoses
- Design allows variable adjustment through wing nut and screw to stop or restrict flow as required without damage
- Manufactured from plated steel for strength and durability
- Simple, effective and safe



**Brake Line Crimping Pliers**

- Designed to shut off (restrict) flow of fluid or vacuum, ideal for automotive applications including vacuum, fuel, brake and heater hoses
- Feature specially designed rounded jaws to provide a damage free secure grip
- Ring lock to hold the plier in the selected position
- Manufactured from light weight strong durable plastic
- Also available individually

Part No.	Description
<b>301025</b>	Three piece set

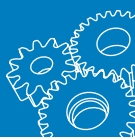
**Contents**

Part No.	Overall Length	Jaw Opening	Jaw Width	Quantity
301022	150mm	0–20mm	10mm	1
301023	185mm	0–33mm	12mm	1
301024	255mm	0–65mm	12mm	1

- Four piece set ideal for applications requiring numerous pliers at once e.g. one man brake bleeding work

Part No.	Description
<b>301025A</b>	Four piece set consisting of 301022 (150mm) pliers

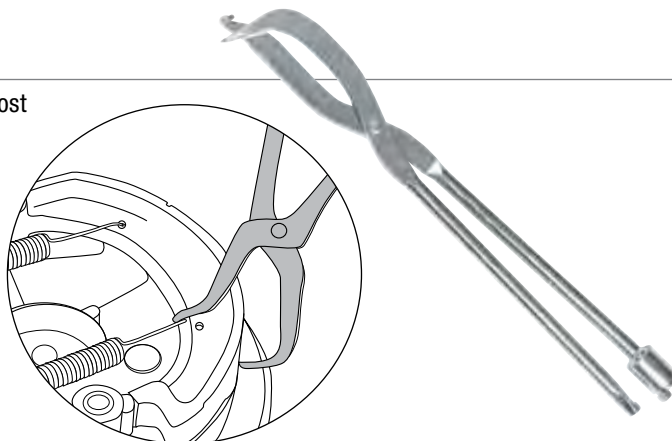




**310257**

## Brake Spring Pliers Heavy Duty

- Used to remove and install brake shoe hold down springs on most drum brakes (where the return spring hooks over a post)
- Socket end removes spring from anchor stud and notched end installs spring on anchor
- Manufactured from chrome plated vanadium steel
- Overall length: 330mm



**310258**

## Brake Spring Pliers Heavy Duty, Truck

- Provides the extra leverage as required for servicing hydraulic wedge type and "S" cam air brakes used on many trucks and trailers
- Allows for servicing of even the widest brake shoes
- Replaceable tip ensures maximum durability and service life
- Manufactured from chrome plated vanadium steel
- Overall length: 660mm

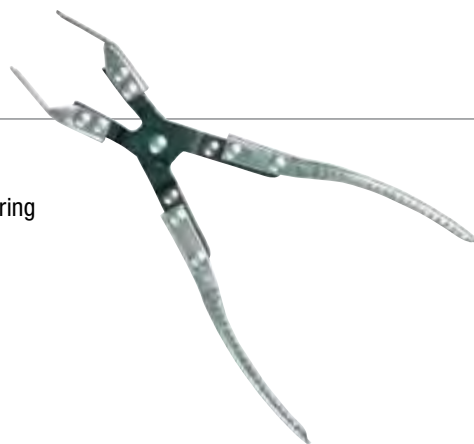


Part No. (Spare Pin)	Description
310270	Spare pin single hook
310271	Spare pin double hook

**310259**

## Parking Brake Spring Plier

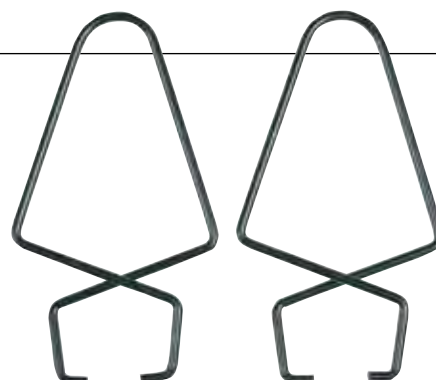
- Designed for the removal and replacement of the lever cable attached to the brake shoe on cars and trucks
- Jaws fit between the spring and the cable end allowing the tool to compress the spring
- Manufactured from chrome plated vanadium steel
- Overall length: 240mm

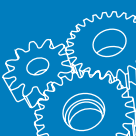


**310263**

## Brake Piston Clamp Set

- Innovative clamp set intended to secure wheel cylinder brake pistons while removing, installing or carrying out service repairs to the drum brake shoes
- Suitable for most passenger vehicles and light commercials
- Working range: 29–82mm (1<sup>1</sup>/<sub>8</sub>"–3<sup>1</sup>/<sub>4</sub>")
- 2 piece set





# BEARING

**301350**

## Bearing & Oil Seal Installation Kit Universal

- Comprehensive universal kit specifically designed for removal and replacement of bearings and oil seals
- Features tapered cone bearing and seal driver tools, manufactured from aluminium for damage free bearing and oil seal replacement
- Size range 40–80mm (see contents)
- Professional quality 10 piece kit supplied in a blow mould case

**Contents**

Part No.	Description
301351	40mm (tapered cone)
301352	44mm (tapered cone)
301353	50mm (tapered cone)
301354	60mm (tapered cone)
301355	63mm (tapered cone)
301356	65mm (tapered cone)
301357	72mm (tapered cone)
301358	76mm (tapered cone)
301359	80mm (tapered cone)
301360	140mm (driver shaft)



**301301**

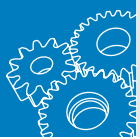
## Bearing & Oil Seal Installation Kit Master

- Comprehensive master kit specifically designed for removal and replacement of bearings and oil seals
- Features universal bearing and seal driver tools, manufactured from POM material for damage free bearing and oil seal replacement
- Size range 10–110mm (see contents)
- Professional quality 37 piece kit supplied in a blow mould case

**Contents**

Part No.	Description	Part No.	Description
301302	Dead blow hammer		25–47mm adaptor
301303	Small driver shaft	301309	25–52mm adaptor
301304	Medium driver shaft		25–62mm adaptor
301305	Large driver shaft		30–55mm adaptor
301306	10–26mm adaptor	301310	30–62mm adaptor
	10–30mm adaptor		30–72mm adaptor
	10–35mm adaptor		35–62mm adaptor
	12–28mm adaptor	301311	35–72mm adaptor
	12–32mm adaptor		35–82mm adaptor
	12–37mm adaptor		40–68mm adaptor
301307	15–32mm adaptor	301312	40–80mm adaptor
	15–35mm adaptor		40–90mm adaptor
	15–42mm adaptor	301313	45–75mm adaptor
	17–35mm adaptor		45–85mm adaptor
	17–40mm adaptor	301314	45–100mm adaptor
301308	17–47mm adaptor		50–80mm adaptor
	20–42mm adaptor	301315	50–90mm adaptor
	20–47mm adaptor		
	20–52mm adaptor	301316	50–110mm adaptor





**304034**

## Main Bearing Housing Aligner Set Holden

- Aligns housing when replacing rear main bearing oil seals on Holden V6 3.8L engines
- Essential tool for this application



**304033**

## Main Bearing Seal Installer Holden

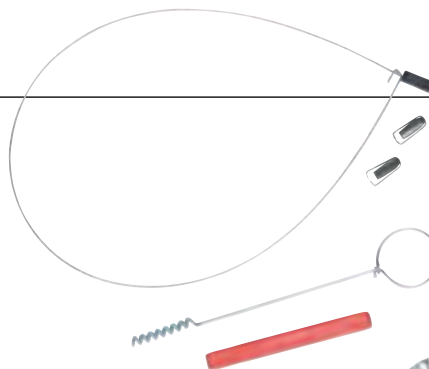
- Used during installation of the rear main bearing oil seal on Holden V6 3.8L engines
- Essential tool for this application
- Diameter: 165mm



**304196**

## Rear Main Seal Tool

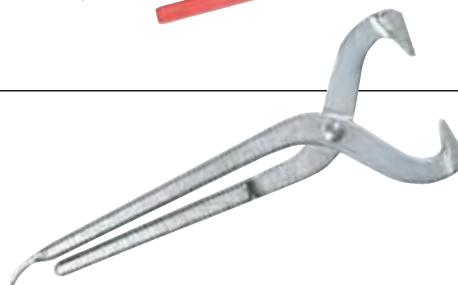
- Rear main seal tool kit to assist in the removal and installation of upper main bearing seals without needing to drop the crankshaft
- Steel fingers hold seal firmly while piano wire and handle provide smooth, flexible pulling for fast and easy change of bearing seals



**301041**

## Bearing Cap Remover

- Tapered jaws designed to sit behind the crimped edge of the bearing dust cap
- May also be used as a hub cap remover via the inbuilt hubcap lug on the handle
- Overall length: 200mm



## CLUTCH & TRANSMISSION

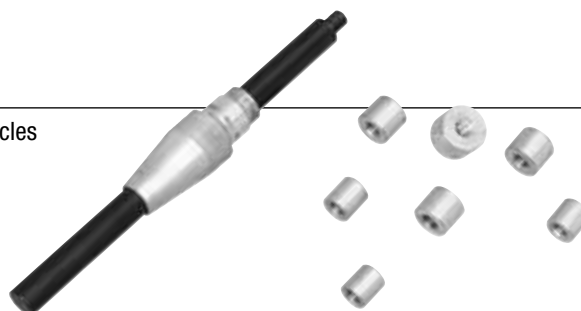
### Clutch Aligning Tools

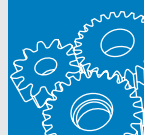
- Tapered cone design for quick and easy assembly, alignment and installation of clutch assemblies
- Suitable for any use on passenger and light commercial vehicles with single dry clutch plates

**306219**

## Clutch Aligning Tool

- Unique cone design for use on passenger and light commercial vehicles
- Includes 15, 16, 17, 19, 20, 21, 25mm adaptors
- Robust metal construction for strength and durability

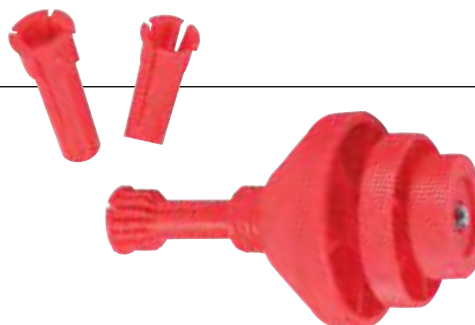




**306218**

## Clutch Aligning Tool Universal

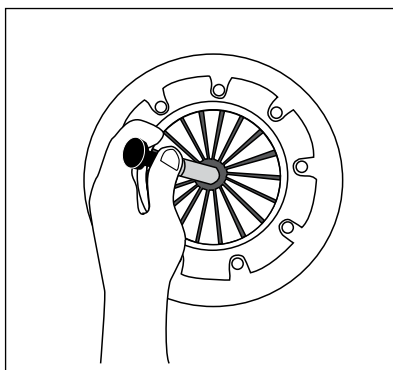
- Unique cone design for use on front wheel drive vehicles without flywheel pilot bearing
- Includes three locating adaptors
- Manufactured from light weight durable plastic



**306001**

## Clutch Centring Mandrels

- Accurate and efficient clutch plate centring on vehicles with clutch guide bearing
- Adjustable from 15-19mm and 20-26mm
- Knurled screw expands diameter to fit most modern cars
- Suitable for small cars and commercial vehicles



**305053**

## Fluid Drain Pan Transmission

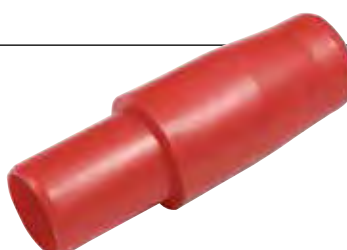
- Unique design for use in servicing vehicle transmissions and gearboxes
- Large surface area ensures effective waste fluid collection
- Features pouring spout to reduce spillage
- Manufactured from strong durable plastic
- Capacity: 17.3L
- Size: 82L x 54.5W x 20D (cm)

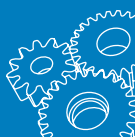


**306217**

## Fluid Retaining Tool Transmission

- Designed to locate within the gearbox after tail shaft removal
- Prevents ATF or gearbox fluid spills or leaks
- Suitable for most vehicle transmissions and gearboxes
- Ideal for use during gearbox and drive train repairs and maintenance





**312000**

## Oil Seal Plug Set

- Eliminates fluid loss during oil servicing
- Five stepped oil seal plug set used to replace oil drain plugs in transmissions and transaxles during servicing
- Hollowed internal section plugs enable excess fluid to be captured and avoid spillage
- Manufactured from high quality plastic for strength and durability

### Contents

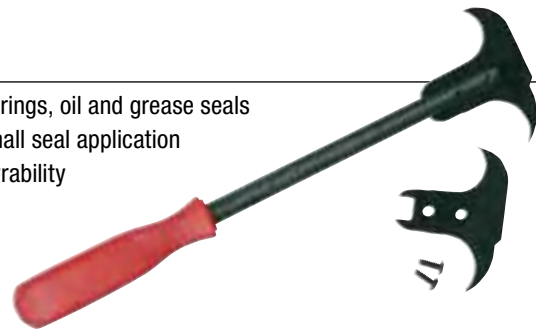
Adaptor	Size 1	Size 2	Overall Length
1	25–27mm	28–30mm	133mm
2	33–35mm	36–38mm	133mm
3	40–42mm	44–46mm	133mm
4	48–50mm	52–54mm	133mm
5	22mm	26mm	133mm



**301042**

## Oil Seal Remover

- Specially designed tool which uses a hook and lever action to dislodge o’rings, oil and grease seals
- Features different sized hook ends to cover a wide range of large and small seal application
- Features an ergonomic moulded plastic handle for comfort and manoeuvrability
- Includes a spare hook tip and retaining screws
- Overall length: 310mm



**306300**

## Pressure Test Kit Automatic Transmission

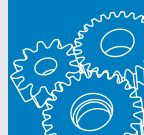
- Comprehensive premium quality automatic transmission test kit
- For automatic transmission pressure problem diagnosis
- Contains a premium quality gauge and adaptation system designed to cater for a wide variety of automatic transmissions

### Contents

Part No.	Item Ref.	Description	Size
306301	A	Pressure gauge & hose assembly	0–100 PSI/7 Bar
306302	B	High pressure gauge & hose assembly	0–500 PSI/35 Bar
306303	C	Adaptor hose	1/8–27 NPT
	M	Adaptor	1/8–27 to 1/4 –18 NPT
	K	Adaptor	1/8–27 to 1/8–28 BSPT
	J	Adaptor	1/8–27 NPT to M10–1.0
	N	Fitting, 90° elbow	1/8–27 NPT
	D	Fitting, nipple 50mm	1/8–27 NPT
			Spare seal kit
306309	L	Fitting, coupling	1/8–27 NPT
	I	Adaptor	1/8–27 NPT to M8 – 1.0
	H	Adaptor	1/8–27 NPT to M8 – 1.25
	G	Adaptor	1/8–27 NPT to 5/16 – 24 NPT
	F	Adaptor	1/8–27 NPT to 1/16 – 27 NPT
	O	Fitting, 45° elbow	1/8–27 NPT
	E	Adaptor, VAG	1/8–27 NPT
		Instruction manual	







## COOLING SYSTEM

**305092**

### Coolant Filler Funnel Set

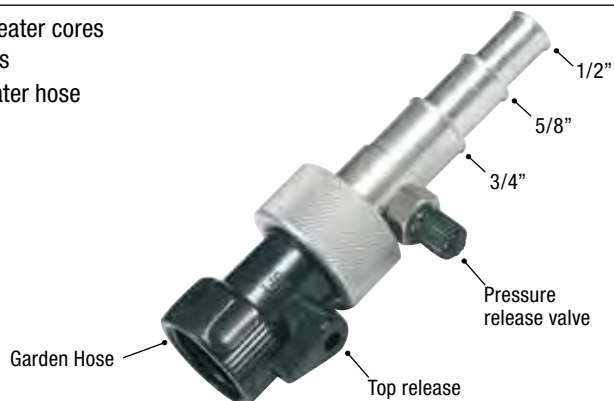
- Universal set for easy, efficient and mess free refilling during cooling system bleeding work
- Includes five rubber seal adaptors (31, 35, 40, 42, 45mm) to suit most vehicles
- Also includes one rubber tapered cone adaptor for variable applications and multi-purpose use
- Enables vehicle coolant filler point to be raised, assisting with coolant system bleeding and removal of air pockets common in modern passenger vehicle applications
- Spare adaptor pack Part No. 305092A
- 8 piece set



**308237**

### Radiator Back Flusher

- Simple and effective tool used to clean cooling systems and heater cores without the need to dismantle or use caustic cleaning solutions
- Connects to 13mm (1/2"), 16mm (5/8") and 19mm (3/4") heater hose as well as a common garden hose

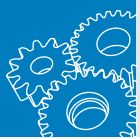


**308240**

### Radiator Fin Straightener

- Multi sized tool used to clean and straighten condenser radiator and evaporator coil fins with gaps of 8, 9, 10, 12, 14, 15 fins per inch
- Small and compact unit with solid grip screwdriver style handle





## Cooling System Testers & Vacuum Purge Kits

- Designed to pressurise the cooling system to identify coolant loss within the system  
This is achieved via the hand pump in conjunction with the adaptors
- The Toledo cooling system tester kits have been researched and developed specifically for Australia and New Zealand and cover more than 95% of the vehicles in these markets
- These kits enable testing on a wide range of passenger and light commercial vehicles and are supplied with a full application listing, by make and model, and user manual
- Available as a master 24 piece kit (Part No. 308550) or smaller 20 piece kit (Part No. 308551). For detailed listing of kit contents refer to the table below
- Vacuum purge kit also available separately (Part No. 308552). This kit is designed to fill the vehicles cooling system by creating a vacuum, utilising the workshop air supply
- All components are available separately
- User manual included
- Note: pump and adaptors are compatible with the previous version of the Toledo cooling system tester

### 308552 Cooling System Vacuum Purge & Refill Kit

- Includes:  
Vacuum purge  
refill kit



### 308550 Cooling System Pressure Tester & Vacuum Purge Master Kit

- Includes: Cooling system tester with thermometer
- Vacuum purge and refill kit
- 16 adaptors with full application listing catalogue



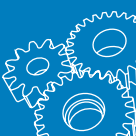
### 308551 Cooling System Pressure Tester Kit

- Includes: Cooling system tester
- 16 adaptors with full application listing catalogue
- Excludes vacuum purge kit and thermometer

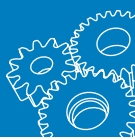


## Contents

Part No. (Spare)	Adaptor No. / I. D. No.	Style	Thread	Kit Part No.		
				308550	308551	308552
308503	3	Metal	Standard bayonet	•	•	
308504	4	Metal	Small bayonet	•	•	
308505	5	Metal	Extra small bayonet	•	•	
308506	6	Plastic	Internal	•	•	
308507	7	Plastic	Internal	•	•	
308508	8	Plastic	External	•	•	
308509	9	Plastic	External	•	•	
308510	10	Plastic	Internal	•	•	
308511	11	Plastic	Internal	•	•	
308512	12	Plastic	Internal	•	•	
308513	13	Plastic	Internal	•	•	
308514	14	Plastic	Internal	•	•	
308515	15	Plastic	Internal	•	•	
308517	17	Plastic	Internal	•	•	
308519	19	Plastic	Internal	•	•	
308520	20	Plastic	Internal	•	•	
308553	1	Pump with hose/gauge		•	•	
308554	2	Black connector standard/small bayonet		•	•	
308555	2	Blue connector standard/extra small bayonet		•	•	
308556	–	Adaptor handle		•	•	
308557	0	Thermometer		•		
308558	–	Vacuum filler gauge		•		•
308559	–	Tapered rubber cone		•		•
308560	–	Plastic hose set		•		•



<p>308503</p> <p>Adaptor <b>No.3</b></p>	<p>308504</p> <p>Adaptor <b>No.4</b></p>	<p>308505</p> <p>Adaptor <b>No.5</b></p>	<p>308506</p> <p>Adaptor <b>No.6</b></p>
<p>308507</p> <p>Adaptor <b>No.7</b></p>	<p>308508</p> <p>Adaptor <b>No.8</b></p>	<p>308509</p> <p>Adaptor <b>No.9</b></p>	<p>308510</p> <p>Adaptor <b>No.10</b></p>
<p>308511</p> <p>Adaptor <b>No.11</b></p>	<p>308512</p> <p>Adaptor <b>No.12</b></p>	<p>308513</p> <p>Adaptor <b>No.13</b></p>	<p>308514</p> <p>Adaptor <b>No.14</b></p>
<p>308515</p> <p>Adaptor <b>No.15</b></p>	<p>308517</p> <p>Adaptor <b>No.17</b></p>	<p>308519</p> <p>Adaptor <b>No.19</b></p>	<p>308520</p> <p>Adaptor <b>No.20</b></p>
<p>308553</p> <p>I. D. <b>No.1</b></p>	<p>308554</p> <p>I. D. <b>No.2</b></p>	<p>308555</p> <p>I. D. <b>No.2</b></p>	<p>308556</p> <p>I. D. <b>No.2</b></p>
<p>308557</p> <p>I. D. <b>No.0</b></p>	<p>308558</p>	<p>308559</p>	<p>308560</p>

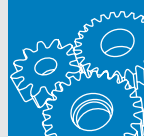


# MECHANICAL SERVICE

## Cooling System Adaptor Application List

Make & Model	Model	Start	Finish	Pressure Test Adaptor
<b>Alfa Romeo</b>				
33		05/84	01/92	No 3
75		10/86	01/92	No 20
90		06/85	02/88	No 20
147		08/01	06/11	No 20
156		02/99	05/06	No 20
166		08/99	01/09	No 20
Alfasud		06/79	12/88	No 3
Alfetta		03/74	07/85	No 3
Giulietta		07/80	03/86	No 3
GT		11/04	06/11	No 20
GTV	GTV 2000 - Carb.	06/72	02/88	No 3
Spider	2.0 - JTS	07/00	07/05	No 20
Sprint	Twin Carb.	11/82	02/88	No 3
<b>Audi</b>				
5E		03/78	06/82	No 3
5+5		10/81	06/84	No 11
80		06/86	09/93	No 11
80		08/92	12/99	No 11
90		09/89	07/92	No 11
100		12/83	12/87	No 3
100		01/88	11/94	No 11
200	Turbo	05/82	12/90	No 11
A3		12/08	06/11	No 9
A4		08/95	06/11	No 9
A5		01/07	06/11	No 9
A6	2.6 - Incl. Quattro	11/94	11/97	No 11
A6	2.8 - Quattro	01/97	06/11	No 9
A8	3.0 TDi	05/95	06/11	No 9 / No 11
Allroad Quattro	2.5 TDi	05/02	01/08	No 9
Fox		12/73	02/79	No 3
Q5		01/09	06/11	No 9
Q7		09/06	06/11	No 9
RS6	4.2 - Twin Turbo	01/03	01/04	No 9
S2	2.2 - Turbo	10/93	04/96	No 11
S3	1.8 - Turbo	11/99	06/11	No 9
S4	2.2 - Turbo	07/93	06/11	No 11
S5	4.2	09/07	06/11	No 9
S6	4.2	02/01	06/11	No 9
S8	4.2	07/98	08/03	No 11
S8	5.2	10/06	06/11	No 9
TT		01/99	06/11	No 9
V8	3.6 - Quattro	01/90	05/92	No 11
<b>BMW</b>				
116i	E87	02/05	02/08	No 17
118d		01/07	06/11	No 17
120d	E87	05/06	06/11	No 17
120i	E87	09/04	06/11	No 17
123d	E82 - E88	11/09	06/11	No 17
125i	E88	01/08	01/09	No 17
130i	E87	03/07	06/11	No 17
135i	E88 - Twin Turbo	01/08	06/11	No 17
1600 - 1800	E10	05/67	07/73	No 3
2000 - 2002	E10	05/67	09/75	No 3
2500 - 2800	E3	01/69	06/75	No 3
3.0	E3	01/70	12/78	No 3
3.3L(i)	E3	08/74	12/75	No 3
316i	E36	01/94	05/01	No 10
316Ti	E46	10/01	07/05	No 10
318Ci	E46	01/00	01/02	No 10
318i	E21	03/80	10/87	No 3
318i	E30	11/88	03/91	No 12

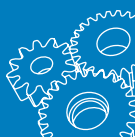
Make & Model	Model	Start	Finish	Pressure Test Adaptor
<b>BMW cont.</b>				
318i	E36/46	04/91	07/05	No 10
320	E21	03/76	03/80	No 3
320Ci	E46	11/00	02/07	No 10
320d	E90 - E91	01/05	06/08	No 17
320d	E90 - E92	07/08	06/11	No 17
320i	E21, 30, 36	03/76	11/95	No 3
320i	E46	10/00	04/05	No 10
320i	E90 - E93	01/05	06/11	No 17
323Ci	E46	06/99	10/00	No 10
323i	E21	06/79	04/83	No 3
323i	E30	03/82	09/85	No 12
323i	E36 - E46	01/96	10/00	No 10
323i	E90, E91, E92	06/06	06/11	No 17
325Ci	E46	05/04	02/07	No 10
325e	E30	01/86	12/87	No 12
325i	E30, E36, E46	01/88	01/04	No 10
325i	E90 - E91	01/05	06/11	No 17
325iS	E30	01/88	03/90	No 12
325Ti	E46	05/02	02/03	No 10
328i,Ci	E36 - E46	01/95	02/07	No 10
330Ci	E46	09/00	02/07	No 10
330d	E90, E92, E93	06/09	06/11	No 17
330i	E46	09/00	05/05	No 10
335i	E90, E91, E92, E93 (Incl. M Series)	10/06	06/11	No 17
520(i)	E12	05/73	12/78	No 3
520d	E60 - Diesel	12/07	06/10	No 10
520d	F10	06/10	06/11	No 17
520i	E28	03/83	12/85	No 12
520i	E34	11/90	03/96	No 10
523i	E39	04/96	09/98	No 10
523i	E60	03/07	06/10	No 17
525	E12	03/74	08/75	No 3
525d	E60	01/07	06/11	No 10
525e	E28	01/86	08/88	No 12
525i	E34, E39	09/88	10/03	No 10
525i	E60	06/05	06/11	No 17
528(i)	E12	07/75	12/83	No 3
528i	E28	11/83	12/85	No 12
528i	E39	04/96	11/00	No 10
528i	F10	06/10	06/11	No 17
530d	E60	10/05	06/10	No 10
530d GT	F07	02/10	06/11	No 17
530i	E34	04/93	03/96	No 10
530i	E39	01/01	04/04	No 10
530i	E60,E61	09/03	06/11	No 17
535i	E28, E34, E39	01/86	09/98	No 10
535i	F10	06/10	06/11	No 17
540i	E34, E39	04/93	09/98	No 10
540i	E60	10/05	06/08	No 17
550i	E60, E61,F10	11/05	06/10	No 17
550i GT	F07	02/10	06/11	No 17
633CSi	E24	03/77	09/89	No 3
645Ci	E63 - E64	05/04	10/05	No 17
650i	E63 - E64	01/08	06/11	No 17
730d	F01	05/09	06/11	No 17
730i,iL	E32	11/90	10/94	No 12
730iL	E38	11/94	05/96	No 10
730Ld	E66	01/07	06/11	No 10
733i	E23	02/78	04/83	No 3
735i	E23	03/85	12/92	No 12



## Cooling System Adaptor Application List

Make & Model	Model	Start	Finish	Pressure Test Adaptor
<b>BMW cont.</b>				
735i,iL	E32, E38, E65	03/87	09/98	No 10
735Li	E66 - LWB	07/02	05/05	No 10
740i	F01	01/09	06/11	No 17
740iL	E32, E38	11/92	10/94	No 10
740Li	E66	06/05	02/09	No 10
740Li	F02	03/09	06/11	No 17
745Li,i	E65 - E66	07/02	02/09	No 10
750i	F01	03/09	06/11	No 17
750iL	E32, E38, E66	01/88	02/09	No 10
750Li	F02	03/09	06/11	No 17
760Li	E66	04/03	02/09	No 10
760Li	F02	12/09	06/11	No 17
840Ci	E31	08/96	06/00	No 10
840i	E31	11/93	07/96	No 10
850Ci	E31	03/93	12/94	No 10
850i	E31	07/90	12/92	No 10
M3	E36, E46	06/94	03/08	No 10
M3	E90 - E93	10/07	06/11	No 17
M5	E34	07/90	05/93	No 12
M5	E39	03/99	10/03	No 10
M5	E60	06/05	06/11	No 17
M535i	E28	01/86	08/88	No 3
M6	E63	11/05	06/11	No 17
X1	E84	04/10	06/11	No 17
M6	E64	01/06	06/11	No 17
X3	E83	12/07	06/11	No 10
X5	E53	03/01	02/07	No 10
X5	E70	02/07	06/11	No 17
X6	E71	07/08	06/11	No 17
Z3	E36	04/97	07/03	No 10
Z4	E85, E89	01/04	06/11	No 10
<b>Chrysler</b>				
300C		11/05	06/11	No 3
Centura	KB - KC	04/75	06/78	No 3
Crossfire	ZH - Incl. SRT6	08/04	01/09	No 3
Galant	GA - GD	08/71	06/77	No 3
Grand Voyager	GS - RT	06/97	06/11	No 3
Lancer	LA - LB	09/74	08/81	No 3
Neon	JA - JB	07/96	09/02	No 3
PT Cruiser		08/00	06/10	No 3
Sebring	2.0 - Turbo	01/09	06/11	No 3
Valiant	ALL	01/62	06/81	No 3
Voyager	GS - RG	02/97	03/08	No 3
<b>Citroen</b>				
AX	1.4 GT	01/91	12/93	No 3
Berlingo	1.4 - M49	07/99	09/03	No 3
Berlingo	M59/B9C	10/03	06/11	No 7
BX16	TRS	01/86	03/90	No 3
BX19		12/88	02/94	No 3
C2,C3,C4,C5,C6		01/04	06/11	No 7
CX2200, CX2400	Carb	03/76	05/83	No 3
CX25, CX25iE		07/84	12/85	No 3
Dispatch	2.0 - G9C	04/08	06/11	No 7
Xantia		09/94	06/01	No 3
XM	3.0 V6	03/91	06/00	No 3
Xsara	1.6	02/00	12/00	No 3
Xsara	1.6	02/01	03/05	No 7
Xsara	1.8	07/98	07/00	No 3
Xsara	2.0	09/98	04/05	No 3 / No 7
<b>Daewoo</b>				
1.5		07/94	10/95	No 6

Make & Model	Model	Start	Finish	Pressure Test Adaptor
<b>Daewoo cont.</b>				
Cielo	1.5 - GL/X	10/95	04/98	No 6
Espero	1995 - CD	03/95	07/97	No 6
Kalos	T200	03/03	01/05	No 6
Korando	2.3,3.2	02/98	07/98	No 6
Lacetti		08/03	01/05	No 6
Lanos	1.5,1.6	08/97	03/03	No 6
Leganza	2.0,2.2	07/97	04/99	No 6
Matiz		10/99	01/05	No 6
Musso	2.9,3.2	09/98	12/02	No 12
Nubira	1.6 - J100	06/97	08/03	No 6
Tacuma		11/00	12/04	No 6
<b>Daihatsu</b>				
Applause	A101	10/89	01/98	No 4
Applause	A101B	01/98	11/99	No 5
Charade	G10	04/80	03/83	No 3
Charade	G11	04/83	04/87	No 4
Charade	G100	06/87	10/88	No 4
Charade	G200 - G202(B)	10/93	03/98	No 5
Charade	G102	10/88	07/93	No 4
Charade	G200(B), G203	06/93	05/00	No 5
Charade	G203B,C	10/96	06/00	No 5
Charade	L251S	06/03	12/05	No 5
Copen	L880	10/03	12/05	No 5
Cuore	L701	07/00	09/03	No 5
Delta	DV23	01/71	12/77	No 3
Delta	All	01/72	01/99	No 3 / No 4
F20, F25,F50-F55,F60-65		01/78	06/84	No 3
Feroza	F300, F310	10/88	01/99	No 4
Handi Van	L55, L60,L80	05/81	12/90	No 4
Handi Van	L500,L600	02/95	12/99	No 5
Handi Van	L701	03/99	04/02	No 5
Hi Jet	S70	07/82	02/84	No 3
Hi Jet	S75 - S85	03/84	06/90	No 4
Mira		11/90	04/95	No 5
Mira (Cuore)	L500 - Centro	03/95	12/99	No 5
Move	L601	02/97	01/99	No 5
Pyzar	G301, G303	02/97	07/00	No 5
Rocky	F70 - F78,F80-F87 (Diesel Incl. Turbo)	01/84	01/99	No 4
Sirion	M100, M101	07/98	02/05	No 5
Sirion	M300	02/05	12/05	No 5
Terios		07/97	12/02	No 4
Terios		12/02	12/06	No 5
YRV	M201	07/01	12/04	No 5
<b>Dodge</b>				
Avenger	JS	08/07	06/11	No 3
Journey	JC	09/08	06/11	No 3
Nitro	KA - V6	06/07	06/11	No 3
Viper		10/02	08/03	No 3
<b>Fiat</b>				
124, 125		04/67	03/76	No 3
127, 128		08/70	12/78	No 3
130,131,132		10/72	02/82	No 3
500 - 850		01/58	12/71	No 3
1100 - 2300		01/60	12/68	No 3
Argenta		03/83	09/85	No 3
Croma		03/88	07/89	No 3
Panorama		01/79	12/81	No 3
Regata	85S, 100S	01/85	12/89	No 20
Scudo	Scudo - Turbo	04/08	06/11	No 7

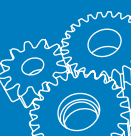


# MECHANICAL SERVICE

## Cooling System Adaptor Application List

Make & Model	Model	Start	Finish	Pressure Test Adaptor
<b>Fiat cont.</b>				
Super Brava		08/81	01/85	No 3
X1/9		05/78	12/83	No 3
<b>Ford</b>				
Bronco		01/81	12/87	No 3
Capri		05/69	12/74	No 3
Capri	SA - SE (Incl. Turbo)	10/89	07/94	No 4
Corsair	UA	11/89	12/92	No 4
Cortina	Mk I, Mk II	01/63	12/71	No 3
Cortina	TC ,TD,TE,TF	10/72	08/82	No 3
Cougar	SW	10/99	04/01	No 6
Courier	SGC	11/78	02/82	No 3
Courier	SGCD	11/82	07/85	No 3 / No 4
Courier	PC	06/85	04/96	No 4
Courier	PD	05/96	12/98	No 5
Courier	PE,PG,PH	01/99	12/06	No 4
Courier (Diesel)	SGHW	04/81	12/85	No 3
Econovan		04/84	05/97	No 3
Econovan		03/03	07/06	No 5
Econovan		04/84	12/94	No 4
Econovan		01/95	02/03	No 5
Econovan		03/03	07/06	No 5
Escape	BA,ZB - ZD	02/04	06/11	No 4
Escort	Mk I, Mk II	03/70	03/81	No 3
Explorer	UN - UZ	10/96	09/01	No 4 / No 6
F100 - F350	4.1	01/70	01/90	No 3
F100 - F350		01/06	06/11	No 6
Fairlane - 6 Cyl	ZA - ZG, ZJ-ZL	03/67	05/88	No 3
Fairlane - 6 Cyl	NA - NL	06/88	06/91	No 14
Fairlane - 6 Cyl	NA - NL	07/91	02/99	No 3
Fairlane - 6 Cyl	AU (NU)	02/99	12/02	No 3
Fairlane - 6 Cyl	BA - BF	06/03	12/07	No 6
Fairlane - V8	ZD - ZH	11/70	04/79	No 3
Fairlane - V8	ZJ - ZK	05/79	03/83	No 3
Fairlane - V8	NC	07/91	03/95	No 3
Fairlane - V8	NF, NL, AU (NU)	03/95	12/02	No 3
Fairlane - V8	BA - BF	06/03	12/07	No 6
Falcon - 6 Cyl	XK - XF	01/60	02/88	No 3
Falcon - 6 Cyl	EA	03/88	06/91	No 14
Falcon - 6 Cyl	EB - EL,AU	07/91	02/11	No 3
Falcon - 6 Cyl	AU	08/98	09/02	No 3
Falcon - 6 Cyl	BA - FG (Incl. Turbo)	09/02	06/11	No 6
Falcon Ute / Van - 6 Cyl	XF - XH	02/88	06/99	No 3
Falcon - V8	XR - XY (Incl. GTHO)	09/66	03/72	No 3
Falcon - V8	XA - XE	03/72	10/83	No 3
Falcon - V8	EB, ED, EF, EL, AU	04/92	12/02	No 3
Falcon - V8	BA	09/02	06/11	No 6
Falcon Ute - V8	XH - Ute	10/97	05/99	No 3
Festiva	WA - WBIII	10/91	12/02	No 4
Fiesta	WP, WQ	02/04	12/08	No 6
Fiesta	WS -WT	02/04	06/11	No 15
Focus	LR	01/00	04/05	No 6
Focus	LS - LV (Incl. Diesel & Turbo)	04/06	06/11	No 15
KA		11/99	03/04	No 6
Laser	KA - KE SOHC (Incl. Turbo)	01/81	04/90	No 3
Laser	KF - KH	10/87	12/94	No 4
Laser	KJ - KN	10/94	03/01	No 5
Laser	KQ	04/01	09/02	No 4 / No 5
LTD - 6 Cyl	FC - FE	10/79	05/88	No 3
LTD - 6 Cyl	DA - DL	06/88	06/99	No 3

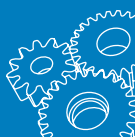
Make & Model	Model	Start	Finish	Pressure Test Adaptor
<b>Ford cont.</b>				
LTD - 6 Cyl	AU	06/99	06/03	No 3
LTD - V8		01/70	06/79	No 3
LTD - V8	FC - FD	06/79	03/83	No 3
LTD - V8	DC - DL	07/91	06/99	No 3
LTD - V8	AU	06/99	04/08	No 3
LTD - V8	BA - BF	07/03	04/08	No 6
Maverick		02/88	09/93	No 4
Meteor	GA,GB	04/82	09/85	No 3
Meteor	GC	10/85	09/87	No 4
Mondeo	MA,MB - Incl. Diesel & Turbo	10/07	06/11	No 15
Mustang		02/01	06/11	No 6
Probe	ST - SV	07/94	01/98	No 4
Raider	UV	08/91	07/97	No 4
Ranger (Diesel)	PJ - PK	01/07	06/11	No 4
Spectron		01/83	05/84	No 3
Spectron		05/84	12/86	No 4
Spectron		12/86	04/90	No 5
Taurus	DN - DP	03/96	09/98	No 6
Telstar	AR - AS (Incl. Turbo)	05/83	11/87	No 3
Telstar	AT - AV (Incl. Turbo)	10/87	01/92	No 4
Telstar	AX - AY	01/92	11/96	No 4
Territory	SX - SY	04/04	06/11	No 6
Trader		01/79	04/99	No 3 / No 4
Transit		01/73	12/81	No 3
Transit	VE - VH Diesel	06/94	05/96	No 3
<b>Ford FPV</b>				
Cobra	BF	10/07	05/08	No 6
F6	BA, BF, FG, SY - Turbo	10/04	06/11	No 6
Falcon	BA - F6 Tornado, Typhoon	09/04	10/05	No 6
Falcon	BA - GT, GT-P	02/03	10/04	No 6
Force 8	BF	01/08	05/08	No 6
GS	FG	09/09	10/10	No 6
GT (P, E)	BF, FG	11/06	10/10	No 6
Pursuit	BF -FG	01/08	10/10	No 6
Ute	BA, BF - Incl. Pursuit	04/05	01/08	No 6
<b>Holden</b>				
Apollo	JK,JL	08/89	02/93	No 4
Apollo	JM, JP	03/93	05/97	No 4 / No 5
Astra	LB - LD	08/84	07/89	No 4
Astra	TR,TS	09/96	06/04	No 6
Astra	AH	09/04	03/10	No 15
Barina	MB, ML, MF, MH	02/85	05/94	No 4
Barina	SB	04/94	02/01	No 6
Barina	SB - Gsi	04/94	09/98	No 6
Barina	XC	04/01	11/05	No 6
Barina	TK	10/05	06/11	No 6
Barina	Spark - CD & CDX	11/10	06/11	No 12
Calibra	YE	10/91	07/98	No 6
Camira	JB - JE	08/82	03/87	No 6
Captiva	CG	10/06	06/11	No 6
Colorado	RC	07/08	06/11	No 4
Combo Van	SB, XC	03/96	06/11	No 6
Commodore - 4 Cyl	VC, VH	03/80	12/83	No 3
Commodore - 6 Cyl	VB - VL	11/78	08/88	No 3
Commodore - V6	VN - Series I	08/88	10/90	No 6
Commodore - V6	VN Series II - VZ (Incl. Supercharged)	08/90	07/04	No 3
Commodore - V6	VZ	08/04	06/08	No 14
Commodore - V6	VZ, VE	06/08	08/09	No 12



## Cooling System Adaptor Application List

Make & Model	Model	Start	Finish	Pressure Test Adaptor
<b>Holden cont.</b>				
Commodore - V6	VE - MY10	09/09	06/11	No 12
Commodore - V8	VB - VT Series II	11/78	10/00	No 3
Commodore - V8	VT - VY Series II	06/99	04/06	No 6
Commodore - V8	VZ	08/04	08/07	No 3
Commodore - V8	VE	07/06	09/10	No 12
Cruze	YG	06/02	06/06	No 5
Cruze	JG	05/09	06/11	No 12
Drover	QB	03/85	12/87	No 4
EK, EJ, EH		05/61	12/65	No 3
Epica	EP - CDX	03/07	06/11	No 6
FX, FJ, FB, FC, FC		11/48	12/61	No 3
Frontera	UED55 (UT)	10/95	03/99	No 6
Frontera	UES25, UES30	03/99	01/04	No 4
Gemini	TC - TG (Incl. Diesel)	03/75	05/85	No 3
Gemini	RB(2)	05/85	06/87	No 4
HD - HZ 6 Cyl		02/65	01/80	No 3
HG - HZ - V8		02/68	01/80	No 3
WB		05/80	01/85	No 3
Jackaroo	UBS81	11/81	07/85	No 3
Jackaroo	UBS16, UBS17	08/85	03/92	No 4
Jackaroo	UBS92, UBS98	04/92	09/04	No 4
Jackaroo (Diesel)	UBS521 - Turbo	01/84	12/88	No 4
Jackaroo (Diesel)	UBS73 L8 - Turbo	03/98	09/04	No 4
Monaro - V6	VX, VY - CV6	12/01	08/03	No 3
Monaro - V8	VX - VY (Incl. Series II)	12/01	08/04	No 6
Monaro - V8	VZ - CV8	09/04	07/06	No 3
Nova	LE, LF	08/89	09/94	No 4
Nova	LG	10/94	04/97	No 5
Piazza	YB	04/86	11/87	No 4
Rodeo	KB	01/78	12/87	No 3 / No 4
Rodeo	TF88 - 99	04/87	02/03	No 4
Rodeo	RA03,07	11/02	07/08	No 4
Rodeo (Diesel)	KB	01/79	12/82	No 3
Rodeo (Diesel)	KB	01/83	12/83	No 3
Rodeo (Diesel)	KB	01/84	12/88	No 4
Scurry	NB - Carb.	07/85	12/87	No 4
Shuttle	WFR (incl Diesel)	03/82	12/86	No 3
Shuttle	WFR	01/87	12/90	No 4
Shuttle (Diesel)	WFR	03/82	12/86	No 3
Statesman - 6 Cyl	HQ	07/71	12/74	No 3
Statesman - V6	VQ - VS Series II	03/90	06/99	No 3
Statesman - V6	WH, WK	06/99	07/04	No 3
Statesman - V6	WL	08/04	07/06	No 14 / No 12
Statesman - V6	WM/VE	08/06	06/11	No 12
Statesman - V8	HJ - WB	07/71	01/85	No 3
Statesman - V8	VQ - VS Series II	03/90	06/99	No 3
Statesman - V8	WH, WK	06/99	07/04	No 6
Statesman - V8	WL	08/04	07/06	No 3
Statesman - V8	WM/VE	08/06	08/09	No 12
Statesman - V8	WM/VE - MY10	09/09	08/10	No 12
Suburban K8	1500 2500	02/98	07/02	No 3
Sunbird	LX, UC	03/76	01/80	No 3
Tigra	XC	08/05	09/07	No 6
Torana - 4 Cyl	HB -TA	05/67	12/76	No 3
Torana - 6 Cyl	LC - UC	11/69	12/79	No 3
Torana - V8	LH, LX	03/74	12/78	No 3
Vectra	JR, JS	06/97	12/01	No 6
Vectra	ZC	03/03	12/06	No 15
Viva	JF - 89Kw	10/05	05/09	No 6
Zafira	TT - DOHC 108kW	06/01	05/06	No 6

Make & Model	Model	Start	Finish	Pressure Test Adaptor
<b>Honda</b>				
Accord		03/77	12/85	No 3
Accord	AD	01/86	10/86	No 4
Accord	CA4	01/87	12/89	No 4
Accord	CB, CB7-9	01/89	12/94	No 4
Accord	CA5 - EX, LX	01/86	03/88	No 4
Accord	CC5, CD5	10/93	01/97	No 5
Accord	CE1 - V-TEC EFI	06/94	12/96	No 5
Accord	CG1 - CU	12/97	06/11	No 5
Acty	VD	10/82	12/88	No 3
Ascot	CB3 (NZ Only)	01/89	01/95	No 4
City	VF	01/84	06/86	No 4
City	GM - Vti	02/09	06/11	No 5
Civic	SBD, SEA	03/73	12/78	No 3
Civic	SB(A), SF, SL	09/76	12/83	No 3
Civic	WB, WC	02/76	12/83	No 3
Civic	AH, AK, AN	01/84	12/87	No 3
Civic	ED - EG	05/89	01/96	No 4 / No 5
Civic	EH - DOHC	10/91	10/93	No 4
Civic	EH - SOHC	10/93	09/95	No 5
Civic	EJ - EK	01/96	11/00	No 5
Civic	ES, EU, FD, FK, FK2	01/00	06/11	No 5
Civic	30 - Type R	07/07	06/11	No 5
Civic	Si	04/09	06/11	No 5
Civic	Hybrid	02/04	01/06	No 5
Concerto	MA	11/88	01/93	No 4
CR-V	RD(1)7,MY07	01/96	06/11	No 5
CRX	ED9	11/87	05/92	No 4
CRX	EG2	09/92	09/98	No 5
HRV	GH2, GH4	01/99	07/02	No 5
Insight		05/01	06/04	No 5
Integra	DA3, DA4	05/86	05/89	No 3
Integra	DA9	06/89	07/93	No 4
Integra	DC2, DC4	07/93	08/01	No 5
Integra	Luxury	09/01	04/07	No 5
Integra	Type R,S	09/01	04/07	No 5
Jazz	GD, GE	10/02	06/11	No 5
Legend	KA	01/96	01/04	No 5
Legend	KA2, KA3	05/86	03/91	No 3
Legend	KA7, KA9, KB	05/86	06/11	No 5
Logo	GA3 (NZ Only)	01/96	01/01	No 5
MDX		03/03	04/07	No 5
NSX	NA, NB	01/91	03/02	No 4
Odyssey	RA, RAL, RA3, RA6, RA9	01/94	05/04	No 5
Odyssey	RA	01/97	01/00	No 5
Odyssey	20 - MY06	07/06	03/09	No 5
Odyssey	RB	04/09	06/11	No 5
Orthia (NZ Only)	EL	01/96	01/01	No 5
Prelude	SNF,AB7, BA3	05/79	09/87	No 3
Prelude	BA4, BA5	08/87	12/91	No 4
Prelude	BA8	12/91	12/96	No 4
Prelude	BB1 - VTi-R	02/94	12/96	No 4
Prelude	BB2BB5, BB6	12/91	07/02	No 5
Rafaga	CE - CE4	01/93	01/98	No 4
S2000		08/99	06/11	No 5
<b>HSV</b>				
Clubsport R8	VE	08/06	06/11	No 12
Grange	WM	08/06	08/09	No 12
GTO	V2	01/06	01/07	No 12
GTS	VE	01/06	06/11	No 12
Maloo (R8)	VE	01/06	02/10	No 12



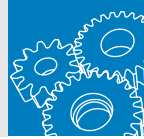
# MECHANICAL SERVICE

## Cooling System Adaptor Application List

Make & Model	Model	Start	Finish	Pressure Test Adaptor
<b>HSV cont.</b>				
Maloo GXP	VE	02/10	06/11	No 12
Monaro	VX	01/06	01/07	No 12
Senator	VE	08/06	02/10	No 12
VXR	AH - Turbo	09/06	09/09	No 15
<b>Hyundai</b>				
Accent	1.3, 1.5, 1.6 - LC, LS, MC	06/00	04/10	No 4
Coupe	1.8 - SX	07/96	04/02	No 4
Coupe	2.0 - FX, SFX	07/96	04/02	No 4
Elantra	1.8 - FC	10/01	05/04	No 4
Elantra	1.8 - XD, 2.0 XD, HD	10/00	06/11	No 4
Excel	X1	02/86	12/89	No 4 / No 5
Excel	X2	01/90	11/94	No 4
Excel	X3 - SOHC	09/94	06/00	No 4
Getz	1.3 - 1.6	09/02	06/11	No 4
Grandeur	2.2, 3.0, 3.8	09/99	06/11	No 4
H100	2.6 - GD27 (NZ only)	01/97	12/04	No 4
i20		07/10	06/11	No 4
i30		10/07	06/11	No 4
iLoad	2.4	02/08	06/11	No 4
iMax		02/08	06/11	No 4
ix35	2.0	02/10	06/11	No 4
Lantra	J1, J2, J3	05/91	12/00	No 4
S Coupe	1.5 - Incl. Turbo	07/90	12/96	No 4
Santa Fe	2.4 (NZ Only)	10/00	10/03	No 5
Santa Fe	2.7 V6	10/00	10/09	No 4
Sonata	ALL	01/89	07/08	No 4
Terracan		11/01	07/08	No 4
Tiburon		03/02	06/11	No 4
Trajet	2.7 V6	06/02	06/11	No 4
Tucson		11/05	01/10	No 4
<b>Isuzu</b>				
Bighorn	UBS13 (NZ Only)	01/81	02/98	No 4
D-Max	TF - TFR85	10/08	06/11	No 4
MU	UCS17	02/89	12/94	No 4
<b>Jaguar</b>				
S Type	V6 - 3.0	05/99	06/02	No 20
S Type	V6 - 3.0	07/02	07/04	No 6
S Type	V8 - 4.0	05/99	06/02	No 20
Sovereign		03/87	09/89	No 3
X Type		06/02	06/11	No 6
XF		06/08	06/11	No 6
XJ6		01/69	10/97	No 3
XJ12		03/73	12/95	No 3
XJC		01/70	12/84	No 3
XJS(C)		09/76	09/93	No 3
<b>Jeep</b>				
Cherokee		03/79	04/85	No 3
Cherokee	XJ - KK	04/94	06/11	No 3
CJ5, 6, 7, 8		06/73	04/85	No 3
Commander		05/06	06/11	No 3
Compass	MK	03/07	03/10	No 3
Grand Cherokee	WJ,WJ, WG, WH	06/99	06/11	No 3
J10, J20		07/81	04/85	No 3
Patriot	MK - LTD, Sport	08/07	06/11	No 3
Renegade		06/81	12/84	No 3
Wrangler	TJ, JK	10/96	06/11	No 3
<b>Kia</b>				
Carens		07/00	10/02	No 4
Carnival	KV11, VQ	09/99	06/11	No 4
Cerato	LD,TD	06/04	06/11	No 4

Make & Model	Model	Start	Finish	Pressure Test Adaptor
<b>Kia cont.</b>				
Cerato	TD - Koup	09/09		No 4
Ceres	S28A, KW52	09/92	02/00	No 4
Credos	G11	05/98	05/01	No 4
Grand Carnival	VQ	01/06	06/11	No 4
K2700	TU, PU	10/02	06/11	No 4
Magentis	MG	08/06	06/11	No 4
Mentor		01/96	01/01	No 4
Optima	GD	05/01	04/04	No 5
Optima	GD	04/04	07/06	No 4
Picanto	(NZ Only)	01/05	12/09	No 4
Pregio	CT - Diesel	07/02	04/06	No 4
Pride	(NZ Only)	01/93	01/97	No 4
Rio	BC	07/00	09/05	No 4
Rio	JB	03/07	06/11	No 4
Rondo	UN	04/08	06/11	No 4
Shuma	FB	12/99	04/01	No 4
Sorento	BL, JC, XM	02/03	06/11	No 4
Soul	AJ	03/09	06/11	No 4
Spectra	FB	05/01	03/04	No 4
Sportage		12/96	03/04	No 4
Sportage	KM	08/07	07/10	No 4
<b>Land Rover</b>				
110	3.5, 3.9 - Incl. Country	11/84	12/91	No 3
3.5		03/81	12/84	No 3
3.9 (Diesel)		10/81	12/84	No 3
Defender (Turbo Diesel)	2.5	09/92	06/11	No 3
Discovery	3.5	04/91	10/93	No 3
Discovery (Turbo Diesel)		03/99	11/04	No 10
<b>Lexus</b>				
ES300	MCV20R, MCV30R	10/96	06/08	No 4
ES300	VCV10R	06/92	10/96	No 4 / No 5
GS300	ALL	11/97	06/11	No 5
GS430	UZS190R	03/05	02/08	No 5
GS450H	GWS191R	05/06	06/11	No 5
GS460	URS190R	02/08	06/11	No 19
IS F	USE20R	10/08	06/11	No 19
IS200	GXE10R	03/99	06/04	No 5
IS250	GSE20R	11/05	06/11	No 5
IS250C	GSE20R - GSE20	07/09	06/11	No 5
IS300	JCE10R	08/01	11/05	No 5
IS350	GSE21L	12/10	06/11	No 5
LS400	UCF20R	11/94	11/00	No 4
LS430	UCF30R	12/00	03/07	No 5
LS460	USF40R	04/07	06/11	No 19
LS600hL		12/10	06/11	No 19
LX470	UZJ100R	05/98	03/08	No 4
RX330	MCU38R	04/03	02/06	No 5
RX350	GGL15R, GSU35R	02/06	06/11	No 5
SC430	UZZ40R	10/01	06/11	No 5
<b>Leyland</b>				
Marina		04/72	12/75	No 3
Mini		01/72	12/83	No 3
Moke		03/66	12/83	No 3
P76		06/73	12/74	No 3
<b>Mazda</b>				
1000 - 1800		03/66	02/77	No 3
121	CD2, CD5	03/76	12/80	No 3
121	DA	03/87	11/90	No 4
121	DB	12/90	12/98	No 5

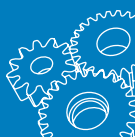




## Cooling System Adaptor Application List

Make & Model	Model	Start	Finish	Pressure Test Adaptor
<b>Mazda cont.</b>				
121	DW1031	10/96	12/00	No 5
121	DW1032	03/00	12/02	No 4
121	DW1051	10/96	12/00	No 5
121	DW1052	03/00	12/02	No 4
323	FA	03/77	12/81	No 3
323	BD,BF, BW, BG	10/80	01/97	No 4
323	BA116	07/94	09/98	No 4
323	BA	07/94	12/98	No 4
323	BA - BA11F	07/94	09/98	No 4
323	BJ, SP20 - Astina, Protégé	09/98	01/04	No 4 / No 5
626	CB2, GC - Incl. Diesel	12/78	10/87	No 3
626	GD, GE, GF, GV - Incl. Turbo	10/87	12/97	No 4
626	GW10	01/98	07/02	No 4
808	SN3A	06/77	12/78	No 3
929	LA	08/73	12/87	No 3
929	HC10E1,2 HD10E1, HE10E1	07/87	11/97	No 4
B1500 - 2000		01/70	05/85	No 3
B2000		06/85	07/88	No 4
B2200	Carb.	03/88	02/93	No 4
B2200 (Diesel)	Diesel	01/81	05/85	No 3
B2200 (Diesel)	Diesel	06/85	03/96	No 4
B2500 (Diesel)		04/96	12/99	No 4
B2500 (Diesel)	Turbo	02/99	11/02	No 4 / No 5
B2500 (Diesel)	Turbo	11/02	11/06	No 4
B2600	Incl. Bravo	03/87	03/96	No 4
B2600	Incl. Bravo	04/96	11/02	No 4
B2600	DX , SDX	11/02	11/06	No 5
Bongo	F1000	01/69	12/79	No 3
Bounty (NZ Only)	UNYOW - Turbo Diesel	01/99	06/11	No 4
BT50 (Diesel)	Turbo	11/06	06/11	No 4
Capella		10/70	12/78	No 3
Capella (NZ Only)		01/88	01/02	No 4
CX-7	ER	11/06	06/11	No 4
Demio	DW3W (NZ Only)	01/96	06/11	No 4 / No 5
E1300	Carb.	05/78	12/80	No 3
E1400, E1600		01/78	07/86	No 3
E1800		02/84	12/96	No 3
E1800	EFI - SWB Van	02/03	07/03	No 5
E1800	EFI - SWB Van	07/03	07/06	No 4
E2000	Carb.	01/74	12/81	No 3
E2000	Carb.	02/84	02/03	No 4 / No 5
E2000	EFI	01/03	07/03	No 5
E2000	EFI	07/03	07/06	No 4
E2200	Diesel	05/81	01/84	No 3
E2200	Diesel	02/84	12/97	No 4
E2500	Diesel	01/80	09/80	No 3
E2500	Diesel	08/97	10/99	No 5
E2500	Diesel	10/99	05/03	No 5
E3000		01/77	12/77	No 3
F1000		01/69	12/78	No 3
Familia	BG5S, BHALP,BJ5W (NZ Only)	01/89	01/03	No 4
Mazda2	DY, DE	12/02	04/10	No 5 / No 6
Mazda3	BK, BL - Incl. Turbo	01/04	06/11	No 15
Mazda6	GG (NZ Only) - GGEP 2.0L	01/02	06/11	No 5
Mazda6 (Diesel)	GG, GH	10/06	06/11	No 4
Millenia	4D Sedan	10/00	05/02	No 4

Make & Model	Model	Start	Finish	Pressure Test Adaptor
<b>Mazda cont.</b>				
MPV	LV, LW, LY3P	10/93	06/11	No 4
MX5	NA, NB, NC	10/89	06/11	No 4
MX6	GC	11/86	12/87	No 3
MX6	GD, GE10, GE20	10/87	09/97	No 4
Premacy		02/01	06/03	No 4
Proceed	UV66R (NZ Only)	01/91	01/96	No 4
R100		06/69	12/71	No 3
RX2 - RX5		10/70	06/79	No 3
RX7	Series I - III	03/79	12/85	No 3
RX7	Series IV Incl. Turbo	01/86	02/89	No 3
RX7	Series V - VIII Incl. Turbo	03/89	12/99	No 4
RX7	FD3S Import	01/91	12/95	No 4
RX8		07/03	06/11	No 4
T2000		05/81	12/82	No 3
T2600 (Diesel)		04/85	12/88	No 4
T3000 (Diesel)		01/81	10/84	No 3
T3500 (Diesel)	Incl. Turbo	05/84	04/97	No 3
T4000 (Diesel)		11/89	07/00	No 3
T4100 (Diesel)		01/84	12/91	No 3
T4600 (Diesel)		06/92	07/00	No 4
Traveller		06/84	12/88	No 3
Traveller		08/86	03/88	No 4
Tribute		03/01	01/08	No 4
<b>Mazda Eunos</b>				
30X	EC	11/92	10/97	No 4
500	CA	11/92	12/99	No 4
800	TA	03/94	05/96	No 4
800M	TA3, TA5, TB3	06/96	08/02	No 4
<b>Mercedes</b>				
180 E	W201	10/91	03/94	No 3
190		01/57	12/66	No 3
190 D	W201	01/86	12/88	No 3
190 E	W201	12/84	12/94	No 3
200 Series	All	02/66	12/68	No 3
220 Series	All	11/61	09/93	No 3
230 Series	All	11/76	01/89	No 3
240 Series	All	08/74	12/82	No 3
250 Series	All	06/68	12/78	No 3
260 Series	All	08/88	12/91	No 3
280 Series	All	07/68	01/86	No 3
300 Series	All	11/76	12/93	No 3
400 Series	All	07/73	01/93	No 3
560 Series	All	04/86	08/93	No 3
600 Series	All	01/63	01/93	No 3
A140	W168	02/00	07/01	No 3
A160	W168	10/98	04/05	No 3
A190	W168	09/99	03/03	No 3
C- Class	All	03/94	10/00	No 3
C- Class	All	11/00	06/11	No 13
E-Class	All	09/93	08/02	No 3
E-Class	All	08/02	09/05	No 13
GL320 CDi	X164	11/06	06/11	No 13
GL350	CDI	11/06	06/11	No 13
GL500	X164	11/06	06/11	No 13
MB100, 140(D)		11/99	05/05	No 3
ML-Series	W164	10/06	06/11	No 13
R320 CDi	W251	04/06	06/11	No 13
R350	W251	04/06	06/11	No 13
R500	W251	04/06	06/11	No 13
R350 CDi	W220	11/00	02/03	No 13

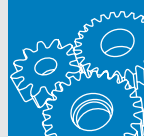


# MECHANICAL SERVICE

## Cooling System Adaptor Application List

Make & Model	Model	Start	Finish	Pressure Test Adaptor
<b>Mercedes cont.</b>				
S-Class	All	09/93	10/95	
S-Class	All	10/95	06/11	No 3 No 13
SL-Class	R129	09/93	12/96	No 3
SL-Class	All	10/95	06/11	No 13
SLK- Series	All	01/97	01/04	No 3
SLK- Series	All	01/04	06/11	No 13
SLS AMG	W197	08/10	06/11	No 13
Sprinter		02/98	12/06	No 3
Viano	639 - 639	07/05	06/11	No 3
Vito		02/98	06/11	No 3
<b>MG</b>				
Magnette		01/56	12/62	No 3
MG		01/71	12/72	No 3
MGB	Mk I - III (Incl. GT)	01/63	12/72	No 3
ZT		05/02	12/06	No 10
<b>MINI</b>				
Cooper	R50 - Incl. S	03/02	02/07	No 3
Cooper	R52 - S	12/04	02/07	No 20
<b>Mitsubishi</b>				
3000GT	JF - 4WD Turbo	10/92	12/96	No 4
380	DB - DL1A	10/05	04/08	No 4 No 5
ASX		07/10	06/11	No 4
Canter	FC211, 212, 432	01/79	01/92	No 3
Canter (Diesel)	FE (Series)	01/79	12/06	No 4
Challenger	PA	03/98	03/07	No 4
Challenger (Diesel)	K97 (NZ Only)	01/96	06/11	No 4
Challenger (Diesel)	PB	12/09	06/11	No 5
Chariot	N33W, N84W (NZ Only)	01/91	01/02	No 4 No 5
Colt	RA - RE	11/80	01/90	No 3
Colt	RG,RZ	08/04	06/11	No 5
Colt	Z25A (NZ Only)	01/01	01/04	No 5
Cordia	AA - AC (Incl. Turbo)	04/83	07/89	No 4
Delica	P02V - PF6W	04/86	12/06	No 4
Delica (Diesel)	P05V - PD5V	04/86	12/06	No 4
Diamante	F31A, TJ (NZ Only)	01/94	05/03	No 5
Express	SF, SG, SH, SJ, WA	10/86	12/06	No 4
Express	SJ - P03V	08/05	02/06	No 5
Express (Diesel)	SF - SJ	09/89	09/03	No 4
Galant	GA, GB, GC, GD	08/71	06/77	No 3
Galant	E35A (NZ Only)	01/89	01/95	No 4
Galant	EA1A (NZ Only)	01/96	01/00	No 5
Galant	EA2A (NZ Only)	01/98	06/11	No 4
Galant	HG, HH - Incl. GSR & Turbo	05/89	03/93	No 4
Galant	HJ	04/93	10/96	No 4 / No 5
Grandis	BA - 35U NA4W	05/04	06/11	No 5
L200	MA - MD (Incl. Diesel)	05/79	10/86	No 3
L300	P03V (NZ Only)	01/87	01/94	No 4
L300	P04V (NZ Only)	01/98	12/04	No 5
L300 (Diesel)	P15V (NZ Only)	01/00	06/11	No 4
L300 Express	SA - SE	04/80	10/86	No 3
Lancer	CA - CJ	09/88	06/11	No 4 / No 5
Lancer	CS5W (NZ Only)	01/00	01/04	No 4
Lancer	CY, CZ - EVO IX	06/04	09/07	No 4
Legnum	EA1W, EC5W (NZ Only)	01/95	01/01	No 5
Libero	CB5W (NZ Only)	01/92	01/00	No 5
Magna	TM - TP	05/85	01/92	No 3
Magna	TR	04/91	03/94	No 4

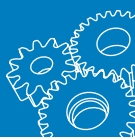
Make & Model	Model	Start	Finish	Pressure Test Adaptor
<b>Mitsubishi cont.</b>				
Magna	TE - TW	04/93	09/05	No 5
Mirage	CA1A (NZ Only)	01/91	01/96	No 4
Mirage	CE	07/96	08/04	No 5
Nimbus	UA - UC	05/84	01/92	No 4
Nimbus	UF, UG	02/92	04/04	No 5
Outlander	ZE-ZG	01/03	06/11	No 4
Pajero	NA - NC	01/83	09/86	No 3
Pajero	ND - NL	10/86	06/00	No 4
Pajero	NM	05/00	11/02	No 4 / No 5
Pajero	NP,NS, NT	11/02	06/11	No 4
Pajero (Diesel)	NA - NC (Turbo)	01/83	10/86	No 3
Pajero (Diesel)	ND	10/86	09/87	No 4
Pajero (Diesel)	NE - NM (Incl. Turbo)	10/87	11/02	No 4
Pajero (Diesel)	NP - Turbo Diesel	11/02	10/06	No 5
Pajero (Diesel)	NS, NT	11/06	06/11	No 4
Pajero iO	QA	03/99	09/03	No 5
RVR	N11W (NZ Only)	01/91	01/98	No 5
RVR	N23W (NZ Only)	01/91	01/98	No 4
Scorpion	GE - GL	03/78	09/85	No 3
Sigma	GE - GN	10/77	12/87	No 3
Starion	JA - JD (Turbo)	05/82	08/87	No 3
Starwagon	SF - WA	10/86	04/04	No 4
Starwagon	WA	09/94	02/00	No 4
Triton	ME - MK	10/86	09/05	No 4
Triton	MK - MN	10/04	06/11	No 5
Triton (Diesel)	ME - MJ	10/86	10/96	No 4
Triton (Diesel)	MK,ML (Incl. Turbo)	10/96	06/11	No 5
Verada	KE - KW	07/91	12/06	No 5
<b>Morris</b>				
1100(S)		01/60	12/69	No 3
850		01/60	12/68	No 3
<b>Nissan</b>				
120Y,180B,200B	B210 - OHV Carb.	03/74	05/81	No 3
200SX	S14, S15	10/94	12/03	No 4
240 Series	240(C, K, Z) - SOHC Carb.	10/70	03/78	No 3
260 Series	260(C, Z) - SOHC Carb.	01/73	12/78	No 3
280 Series	280C, 280ZX	03/78	05/84	No 3
300 Series	300C, 300ZX	05/84	04/09	No 4
720		01/80	12/85	No 3
720		06/83	12/85	No 3
720 (Diesel)		01/80	12/85	No 3
Bluebird		01/60	12/86	No 3
Bluebird	U13 (NZ Only)	01/90	01/97	No 4
Bluebird	U13	01/90	01/98	No 4
Bluebird	G10 (NZ Only)	01/00	01/03	No 4
Caball	C240, C340 - OHV Carb.	01/70	12/81	No 3
Cabstar	F22 - Petrol	05/82	12/87	No 3
Cabstar	H40 - Petrol	01/82	12/87	No 4
Cabstar	H41 - Petrol	05/82	12/87	No 3
Cabstar (Diesel)	F22 - Diesel	10/85	01/92	No 4
Cabstar (Diesel)	H40 - Incl. Turbo	05/82	12/87	No 3
Cabstar (Diesel)	H40 - Incl. Turbo	05/87	01/93	No 4
Cabstar (Diesel)	H42 - Turbo	08/84	12/86	No 3
Cefiro	A32 (NZ Only)	01/94	01/98	No 4
Civilian Bus	H40, W40	05/84	12/06	No 4
EXA	KEN13,KCN13	02/87	10/91	No 4
Gazelle	S12	01/84	11/88	No 4
Infiniti	Q45 - NG50, N51	09/93	12/97	No 4
Lucino	B14, N15 (NZ Only)	01/94	01/99	No 4



## Cooling System Adaptor Application List

Make & Model	Model	Start	Finish	Pressure Test Adaptor
<b>Nissan cont.</b>				
March	K11, K12 (NZ Only)	01/92	01/05	No 4
Maxima		10/88	11/03	No 4
Micra	AK11E	05/95	12/98	No 4
Murano	Z50 - ST, TI	07/05	01/09	No 4
Navara		01/86	06/11	No 4
Navara (Diesel)	D21,D22	01/86	06/11	No 4
Navara (Diesel)	D40 - Incl. Turbo & Titanium Edition	12/05	06/11	No 4
Nomad	GC22	01/87	01/92	No 4
NX,R	AB13	10/91	01/96	No 4
Pathfinder	D21, R50, R51	01/86	11/95	No 4
Patrol	G60 - OHV Carb.	01/65	01/85	No 3
Patrol	MQ	01/80	12/87	No 3
Patrol	GQ, GU	02/88	06/11	No 4
Patrol (Diesel)	MQ - Incl. Turbo	01/80	12/87	No 3
Patrol (Diesel)	GQ	08/87	12/97	No 4
Patrol (Diesel)	GU - SOHC (Turbo Diesel)	01/98	09/07	No 4
Pintara	U12, U13	01/86	10/92	No 4
Prairie	M10	12/82	08/86	No 3
Prairie	M11 (NZ Only)	01/95	01/98	No 4
Presea	R11 (NZ Only)	01/94	01/00	No 4
Primera	P10, P11 (NZ Only)	01/89	01/02	No 4
Pulsar	N Series	10/80	01/06	No 4
Serena	AC23	10/92	11/95	No 4
Silvia	S12,S13,S14,S15	02/86	12/06	No 4
Skyline	C210, R30	03/78	06/86	No 3
Skyline	R31,R32,R33,R34	08/85	04/89	No 4
ST		09/82	12/91	No 3
Stanza	A10 - SOHC Carb.	10/78	09/83	No 3
Sunny	B310	01/79	12/81	No 3
Sunny	B14 (NZ Only)	01/94	01/98	No 4
Sunny	B15 (NZ Only)	01/98	01/04	No 4
Terrano	R50,R20	09/95	09/01	No 4
TIIDA	C11	02/06	06/11	No 4
Urvan	E20 - E23	04/74	12/87	No 3
Urvan	E24	03/87	09/93	No 4
Vanette	C20, C120	10/80	01/86	No 3
Vanette	C22	12/86	01/93	No 4
Wingroad	Y10, Y11 (NZ Only)	01/94	01/03	No 5
X-Trail	T30,T31	10/01	06/11	No 4
<b>Peugeot</b>				
205	1.9 ,1.6	01/87	12/94	No 3
206	1.4	03/02	03/04	No 7
207	All	02/07	06/11	No 7
306	All	04/94	12/01	No 3
307	All	12/01	06/09	No 7
308	All	02/08	06/11	No 7
3008	All	06/10	06/11	No 7
405	All	02/89	12/96	No 3
406	All	09/96	08/04	No 3
407	All	09/04	01/10	No 7
505	All	01/80	01/93	No 3
605	3.0 - V6	03/94	08/96	No 3
607	3.0 - V6	11/01	06/08	No 7
Expert	2.0 HDi	08/08	06/11	No 7
Partner	1.6 - L1	09/08	06/11	No 7
RCZ	1.6T,2.0	10/10	06/11	No 7
<b>Proton</b>				
Gen.2	1.6 - CM	10/04	03/09	No 4
Jumbuck	1.5 - GLI, GLSI	02/03	06/11	No 5

Make & Model	Model	Start	Finish	Pressure Test Adaptor
<b>Proton cont.</b>				
M21	1.8	10/97	11/00	No 5
Persona	1.3 - Gli	10/99	10/04	No 4
Persona	1.5 - Gli,1.6 Xli	11/96	10/04	No 5
Satria	1.3 - GL	10/99	06/02	No 4
Satria	1.5 - GL, Gli	02/97	09/99	No 5
Satria	1.6 - Xli	02/97	11/00	No 5
Satria	1.8 - GTi	10/99	01/07	No 4
Waja	1.6	12/01	10/05	No 4
Wira	1.5,1.6	05/95	11/96	No 5
<b>Range Rover</b>				
Range Rover	2.4 - Turbo Diesel	03/88	12/90	No 3
Range Rover	2.9 - Turbo Diesel TD6	08/02	01/07	No 10
Range Rover	3.5,3.9	01/72	04/95	No 3
Range Rover	4.0 - SE	05/95	05/00	No 10
Range Rover	4.0, 4.4, 4.6	01/98	12/07	No 10
<b>Renault</b>				
R18	1.6 - Carb	03/80	12/83	No 20
R19	1.7, 1.8 - EFI	09/91	12/96	No 20
R21	2.2 - EFI	01/88	12/91	No 20
R25	2.2 - EFI	01/85	12/91	No 20
<b>SAAB</b>				
9-3	2.0 - Incl. Turbo	06/98	01/07	No 6 / No 20
9-3	2.0 - Turbo	11/07	06/11	No 15
9-3	2.3	06/98	12/99	No 20
9-3	2.3 - Turbo	08/99	01/01	No 6
9-5	2.0 - Turbo	11/07	06/11	No 15
9-5	2.3 - Turbo	11/97	01/01	No 6
9-5	2.3,3.0 - Incl. Turbo	05/06	06/11	No 6
900	2.0,2.1,2.3,2.5- Incl. Turbo	03/79	12/98	No 20
9000	2.0,2.3,3.0 - Incl. Turbo	05/86	12/98	No 20
<b>Seat</b>				
Cordoba		09/98	12/00	No 8
Ibiza		01/95	12/00	No 8
Toledo		01/95	12/00	No 8
<b>Skoda</b>				
Fabia	1.6	01/08	06/11	No 9
Octavia	1.6, 1.8, 1.9, 2.0	03/09	06/11	No 9
Roomster	1.6, 1.9	10/07	06/11	No 9
Superb	1.8,2.0, 3.6	05/09	06/11	No 9
<b>Ssangyong</b>				
Actyon	All	03/07	06/11	No 6
Korando	All	03/04	06/07	No 6
Kyron	All	02/06	06/11	No 6
Musso	All	03/04	09/07	No 6
Rexton	All	06/03	03/08	No 6
Stavic	All	03/05	06/11	No 6
<b>Subaru</b>				
1400, 1600		01/73	12/78	No 3
Brumby		06/78	03/94	No 3
DL		01/74	09/80	No 3
Fiori	KN4	03/90	12/92	No 4
Forester	All	08/97	06/11	No 4
GF, GL		07/73	12/78	No 3
Impreza	GF (NZ only)	01/96	01/00	No 5
Impreza		04/93	06/11	No 4
Legacy	BF, BG (NZ only)	01/89	01/98	No 4
Legacy	BH (NZ only)	01/98	01/00	No 4
Legacy	BH (NZ only)	01/00	01/03	No 5
Leone		10/79	01/85	No 3

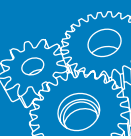


# MECHANICAL SERVICE

## Cooling System Adaptor Application List

Make & Model	Model	Start	Finish	Pressure Test Adaptor
<b>Subaru cont.</b>				
Leone		12/84	12/95	No 4
Liberty	2.0, 2.2, 2.5	10/91	09/09	No 4
Liberty	3.0R(B)	08/04	09/09	No 5
Outback	2.5	09/96	08/09	No 4
Outback	3.0, 3.6	10/00	06/11	No 5
RX	Turbo - 4WD	11/85	08/87	No 4
Sherpa	KM3, KN3	10/82	10/89	No 4
SVX	CX	03/92	04/97	No 4
Tribeca	3.0R, 3.6R	11/06	06/11	No 5
Vortex	AX, XT - AX4, AX7	09/85	09/89	No 4
<b>Suzuki</b>				
Alto	SB	09/85	05/88	No 3
Alto	SB	01/87	02/89	No 4
Alto	SH, GF	03/96	06/11	No 5
APV	GD	08/05	06/11	No 5
Baleno	SY, GC	04/95	11/01	No 5
Carry	ST	01/73	06/78	No 3
Carry	DA, GA	06/99	08/05	No 5
Cino	SY	05/94	12/99	No 4
Escudo	TD11W (NZ Only)	01/94	01/97	No 5
Grand Vitara	JB 4cyl	09/05	06/11	No 5
Grand Vitara	JT	08/08	06/11	No 4
Grand Vitara	SQ	04/98	07/08	No 5
Hatch	SS	02/80	01/85	No 4
Ignis	RG413, RG415	01/00	02/05	No 5
Jimny	SN	10/98	06/11	No 5
Kizashi		05/10	06/11	No 5
Liana	RH	11/01	08/07	No 5
LJ50		07/74	06/78	No 3
LJ80, LJ81		11/77	12/81	No 3
Mighty Boy	SS	07/85	10/88	No 4
Sierra	SJ	07/81	07/84	No 3
Sierra	SJ, MG	10/84	12/98	No 4
Super Carry	SK	07/85	12/90	No 4
Swift	SA310, SF310 - Carb.	03/84	12/96	No 4
Swift	SA413, SF416	01/85	04/95	No 4
Swift	EZ	02/05	06/11	No 5
SX4	GY	02/07	06/11	No 5
Vitara	SE, SV	07/88	11/01	No 4
Wagon	SR	10/97	12/99	No 5
X90	SZ	04/96	05/98	No 5
XL7	JA	07/01	01/06	No 5
<b>Toyota</b>				
4 Runner	YN60	07/84	10/85	No 3
4 Runner	YN63, YN130	11/85	12/90	No 4
4 Runner	RN130(R), VNZ130	05/89	06/96	No 4
4 Runner (Diesel)	LN60, LN61	07/84	01/89	No 3
4 Runner (Diesel)	LN61, LN130R	05/89	06/96	No 4
Altezza	SXE10 (NZ only)	01/98	01/04	No 5
Altezza	GXE10 (NZ only)	01/98	01/04	No 4
Aurion	GSV40(R) Incl. TRD	10/06	06/11	No 5
Avalon	MCX10R	07/00	05/06	No 4
Avensis	All	01/01	06/11	No 5
Blizzard	LD10 - Diesel	03/82	12/83	No 3
Bundera	RJ70	11/84	12/91	No 3
Bundera (Diesel)	LJ70 - Turbo	11/84	12/91	No 4
Caldina	ST191 - 210 (NZ only)	01/92	01/02	No 5
Caldina	ST215 - Turbo	01/97	01/02	No 5
Camry	All	04/83	02/93	No 4
Camry	SXV10, SXV20R, ACV36R, ACV40R	02/93	06/11	No 5

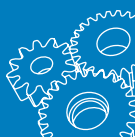
Make & Model	Model	Start	Finish	Pressure Test Adaptor
<b>Toyota cont.</b>				
Camry	VZV20, 21	06/88	02/93	No 4
Camry	VCV10(R), VDV10R - Incl. Vienta	02/93	09/97	No 4 / No 5
Camry	MCV20R, MCV36R	08/97	08/02	No 4
Carib	AE115 (NZ only)	01/95	01/00	No 4 No 5
Carib	AE111 (NZ only)	01/96	01/01	No 5
Cavalier	TJG	01/95	01/00	No 6
Celica	TA22, 23, RA23, 28, 40R	11/71	10/81	No 3
Celica	RA60R, RA65R, SA63, ST162R	11/81	10/89	No 4
Celica	ST182, ST183(C), SR184R, ST185(R)	09/89	03/94	No 5
Celica	ST202, ST203, ST204(R), ST205(R)	09/93	11/99	No 5
Celica	ZZT230 (NZ only)	01/99	01/02	No 5 / No 19
Celica	ZZT230, ZZT231	08/99	03/06	No 19
Coaster	RU18, RU19, RB11, RB13	01/68	12/82	No 3
Coaster	RB20	01/82	06/92	No 4
Coaster (Diesel)	BU, BB	01/74	07/82	No 3
Coaster (Diesel)	BB20	01/84	12/86	No 3
Coaster (Diesel)	BB21, BB40, BB50	01/87	09/06	No 4
Coaster (Diesel)	HB30, HZB30, HZB50	01/87	10/06	No 4
Coaster (Diesel)	HZB50	10/06	06/11	No 5
Corolla	All	01/66	04/85	No 3
Corolla	AE71, 80, 82, 86, 90, 92(R)	10/83	12/94	No 4
Corolla	AE93	11/92	09/94	No 4 / No 5
Corolla	AE100 (NZ only)	01/91	01/00	No 5
Corolla	AE101R, AE102(R, X)	09/91	12/98	No 5
Corolla	AE110 (NZ only)	01/95	01/00	No 4
Corolla	AE111, AE112	01/95	01/02	No 5
Corolla	AE95R	04/88	07/95	No 4
Corolla	ZZE122R, ZZE123	12/01	04/07	No 5
Corolla	ZRE152R	05/07	06/11	No 19
Corolla li	EL51 (NZ only)	01/94	01/99	No 4
Corona	All	01/66	04/87	No 3
Cressida	MX32, 36, 62R	03/77	12/88	No 3
Cressida	MX73R, 83R	02/81	01/93	No 4
Crown	All	10/63	09/83	No 3
Crown	MS123, 125	10/83	05/88	No 4
Cynos	EL52 (NZ only)	01/95	01/99	No 4 / No 5
Dyna	All	01/69	06/05	No 3 / No 4
Echo	NCP10R, 12R, 13R	10/99	10/05	No 5
Estima	TCR10W - 21W	05/90	12/99	No 4
Estima	MCR30W, 40W	12/99	12/04	No 4
Estima	ACR30, 40	01/00	06/11	No 5
Estima (Turbo Diesel)	CXR10	01/92	01/99	No 5
Estima Emina / Lucida	TCR10G - 21G	01/92	12/99	No 4
Estima Emina / Lucida (Turbo Diesel)	CXR10G - 21G	01/92	12/99	No 5
Hiace	RH Series	01/67	12/82	No 3
Hiace	YH50 - 73	01/82	09/89	No 4
Hiace	RZH Series	10/89	03/05	No 4
Hiace	RCH12R - SBV	10/95	02/05	No 4
Hiace	RCH22	01/99	01/04	No 4
Hiace	TRH201R	03/05	06/11	No 19
Hiace	TRH221R, 223R	03/05	06/11	No 19
Hiace (Diesel)	KZH100 (NZ only) - Turbo	01/93	01/02	No 4



## Cooling System Adaptor Application List

Make & Model	Model	Start	Finish	Pressure Test Adaptor
<b>Toyota cont.</b>				
Hiace (Diesel)	LH20, LH30	03/81	01/83	No 3
Hiace (Diesel)	LH Series	01/83	03/07	No 4
Hiace (Diesel)	KDH200R - KDH222R (Turbo)	03/05	06/11	No 19
Hilux	RN Series	01/61	10/83	No 3
Hilux	RN Series	10/88	01/98	No 4
Hilux	YN55	11/83	08/85	No 3
Hilux	YN55	08/85	09/87	No 4
Hilux	YN56	10/87	09/88	No 4
Hilux	YN57	11/83	08/85	No 3
Hilux	YN57	08/85	09/87	No 4
Hilux	YN58, YN67	11/85	09/88	No 4
Hilux	YN65	11/83	10/85	No 3
Hilux	YN85 (NZ only)	01/88	01/96	No 4
Hilux	YN85R	10/88	11/97	No 4
Hilux	VZN130	01/90	01/96	No 4
Hilux	RZN147R - RZN174R	08/97	04/05	No 5
Hilux	VZN167R, VZN172R	09/02	04/05	No 5
Hilux	TGN16R	03/05	06/11	No 5
Hilux	GGN15R, GGN25R	03/05	06/11	No 5
Hilux (Diesel)	LN30 -55	10/78	12/84	No 3
Hilux (Diesel)	LN56	09/84	09/88	No 4
Hilux (Diesel)	LN65	11/83	08/85	No 3
Hilux (Diesel)	LN65	08/85	09/88	No 4
Hilux (Diesel)	LN85 -111R	01/88	01/98	No 4
Hilux (Diesel)	LN130 (NZ only) - Turbo	01/89	01/95	No 4
Hilux (Diesel)	LN147R, LN167R, LN172R	11/97	04/05	No 5
Hilux (Diesel)	KZN165R - Turbo	11/00	04/05	No 5
Hilux (Diesel)	KZN185 (NZ only) - Turbo	01/95	01/00	No 4
Hilux (Diesel)	KUN16R, KUN26R - Incl. Turbo	03/05	09/06	No 19
Hilux (Diesel)	KUN26R - Turbo	10/06	12/10	No 19
Hilux Surf	All	04/89	08/00	No 4
Hilux Surf	VZN185W	08/00	08/02	No 5
Hilux Surf	VZN210W, VZN215W	11/02	06/11	No 5
Hilux Surf	YX78V	02/93	06/03	No 4
Hilux Surf	RZN Series	07/98	08/00	No 4
Hilux Surf	RZN210W, RZN215W	11/02	06/11	No 5
Hilux Surf	LN130(G, W), LN131V - Incl. Turbo	04/89	08/93	No 4
Hilux Surf	KZN130 - KZN185W (Turbo)	01/93	04/05	No 4
Hilux Surf	KDN185 - KDN215 (Incl. Turbo)	08/00	06/11	No 5
Kluger	All	10/03	06/11	No 5
Landcruiser	FJ40 - FJ60	01/70	09/84	No 3
Landcruiser	FJ, FZJ, UZJ Series	11/84	06/11	No 4
Landcruiser (Diesel)		12/77	12/84	No 3
Landcruiser (Diesel)	BJ70, BJ73, BJ74 - Turbo	10/84	03/90	No 4
Landcruiser (Diesel)	HJ45, HJ47	09/77	12/84	No 3
Landcruiser (Diesel)	HJ60	11/80	11/84	No 3
Landcruiser (Diesel)	HJ60, HJ61, HJ75 - Incl. Turbo	11/84	12/91	No 4
Landcruiser (Diesel)	PZJ, HDJ, HZJ, SERIES	03/90	10/07	No 4
Landcruiser (Diesel)	VDJ76R, VDJ78R, HZJ179R - Turbo	03/07	06/11	No 19
Landcruiser (Diesel)	VDJ200R - Turbo	11/07	06/11	No 19
Landcruiser Prado	RZJ95R	07/96	03/98	No 4
Landcruiser Prado	RZJ95R, RZJ120R	03/98	09/04	No 5
Landcruiser Prado	VZJ95R, VZJ99R	07/96	02/03	No 5

Make & Model	Model	Start	Finish	Pressure Test Adaptor
<b>Toyota cont.</b>				
Landcruiser Prado	GRJ120R, GRJ150R	02/03	06/11	No 5
Landcruiser Prado (Diesel)	KZJ95R - Turbo	03/00	02/03	No 5
Landcruiser Prado (Diesel)	KZJ120R - Turbo	02/03	07/03	No 5
Landcruiser Prado (Diesel)	KZJ120R - Turbo	07/03	10/09	No 19
Lexcen	VN - Series I	09/89	10/90	No 6
Lexcen	VN Series II - VS	10/90	04/97	No 3
Lite-Ace (Diesel)	CM20, CM36	01/83	03/92	No 4
Lite-Ace	KM20	02/80	10/82	No 3
Lite-Ace	KM20, KM36, YM21, YM30, YM-35RV, YM40, YM41	10/82	03/92	No 4
MR2	AW11R, SW20R	10/87	09/00	No 4
MR2	ZZW30R	10/00	10/02	No 19
Paseo	EL44R, EL54R	07/91	07/99	No 5
Platz	NCP12 (NZ only)	01/99	01/05	No 5
Previa	ACR30 (NZ only)	01/90	01/00	No 4
Previa	ACR30 (NZ only)	01/00	06/11	No 5
Prius	NHW11R, NHW20R - Hybrid	10/01	06/09	No 5
RAV4	SXA, ACA Series	05/94	08/03	No 5
RAV4	ACA20R, ACA21	07/00	02/06	No 5
RAV4	ACA33R, GSA33R	02/06	06/11	No 19
Soarer	GZ20	01/86	04/91	No 4
Soarer	MZ20, MZ21	01/86	04/91	No 4
Soarer	JZZ30	05/91	12/00	No 4
Soarer	JZZ31	01/94	12/00	No 5
Soarer	UZZ30 - UZZ40	05/91	12/06	No 4
Spacia	YR22R	10/93	01/98	No 4
Spacia	SR40R	01/98	12/01	No 5
Sprinter	AE101 (NZ only)	01/94	01/99	No 4
Starlet	EP71, EP76V	10/84	12/89	No 4
Starlet	EP82, EP91 (R), EP95	12/89	10/99	No 5
Starlet	NP70, NP76V	12/86	12/89	No 4
Starlet	NP80, NP90	12/89	07/99	No 5
Stout		01/64	12/79	No 3
Supra	MA61	10/83	03/86	No 3
Supra	MA70	03/86	08/89	No 4
Supra	MA70	08/89	05/93	No 5
Supra	MA71	10/88	08/89	No 4
Supra	MA71	08/89	04/93	No 5
Supra	JZA80	05/93	12/97	No 5
T18	TE72	10/79	07/83	No 3
Tarago	YR20 - YR31	02/83	10/90	No 4
Tarago	TCR10R - TCR21R	09/90	12/00	No 4
Tarago	ACR30R	06/00	06/03	No 4
Tarago	ACR30R	06/03	02/06	No 5
Tarago	ACR50R	03/06	06/11	No 19
Tarago	GSR50(R)	01/07	06/11	No 19
Tarago (Diesel)	CR21	01/83	12/88	No 4
Tercel	AL25	10/83	04/88	No 4
Townace	YR39R	04/92	12/96	No 4
Townace	KR42R	02/97	04/04	No 5
Toyo-Ace	PK40, 41, RY13, RY31	01/64	01/85	No 3
Toyo-Ace (Diesel)	LY30, 31	03/82	01/85	No 3
Vitz	SCP10, NCP10 (NZ only)	01/99	01/04	No 5
Windom	VCV10 (NZ only) - VCV10	01/91	01/96	No 4
Yaris	NCP90R, NCP91R, NCP93	10/05	06/11	No 5

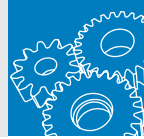


# MECHANICAL SERVICE

## Cooling System Adaptor Application List

Make & Model	Model	Start	Finish	Pressure Test Adaptor
<b>Volkswagen</b>				
Beetle (New)	All	01/00	06/11	No 9
Bora	All	11/99	06/07	No 9
Caddy	1.6, 1.9TDi	01/05	06/11	No 9
Caravelle	1.9	01/84	01/86	No 3
Caravelle	2.1	12/86	02/92	No 11
Caravelle		01/93	04/05	No 8
Crafter 35	2.5 TDi	03/07	06/11	No 9
EOS	2.0T,Tdi	03/07	07/08	No 9
Golf I	1.5 - Diesel	03/78	12/82	No 11
Golf I	1.6	03/76	12/80	No 11
Golf II	1.8 - Incl. GTi	09/90	12/93	No 8
Golf III	All	10/95	09/98	No 8
Golf IV	1.6	09/98	12/02	No 9
Golf IV	1.6	03/02	07/04	No 9
Golf IV	1.8	10/98	12/99	No 8
Golf IV	1.8T - GTi	09/98	07/04	No 9
Golf IV	2.0	07/99	12/02	No 8
Golf IV	2.0	03/02	07/04	No 9
Golf IV	3.2 - R32	11/03	07/04	No 9
Golf V	1.9 TDi	08/04	03/08	No 9
Golf V	All	01/04	06/11	No 9
Golf VI	1.4 - GT,1.6 Tdi	05/07	06/11	No 9
Jetta	All	02/06	06/11	No 9
Kombi	1.9 TDi	07/06	04/09	No 9
Kombi	2.1	11/86	02/92	No 11
Kombi	2.5	05/03	08/07	No 8
Kombi	2.5 TDi	07/06	04/09	No 9
LT 35,LT35, LT45, LT46		03/03	12/06	No 9
Multivan	2.5 Tdi,3.2	04/05	06/11	No 9
Passat	1.8	03/98	07/04	No 8
Passat	1.8T	03/98	07/04	No 9
Passat	2.0	08/95	02/97	No 8
Passat	2.0T,2.0 TDi	03/06	06/11	No 9
Passat	2.0 TDi - 125kW	08/09	06/11	No 9
Passat	2.3 V5	11/02	11/05	No 9
Passat	2.8 - VR6	08/95	02/97	No 8
Passat	2.8 V6	05/01	02/06	No 9
Passat	2.8 - VR6	02/99	02/06	No 9
Passat	2.8 - VR6 4 Motion	02/99	02/06	No 8
Passat	3.2 V6	03/06	07/08	No 9
Passat	4.0 - W8	04/03	07/04	No 9
Polo	1.4	07/02	09/08	No 9
Polo	1.6	01/96	01/02	No 8
Polo	1.6i,6TDi, 1.8-Gti,1.9 Tdi	03/04	06/11	No 9
Touareg	All	09/03	06/11	No 9
Transporter	1.9 - 2.0	01/83	01/92	No 11
Transporter	1.9 TDi - T5	07/04	06/11	No 9
Transporter	2.0 - T4	11/92	12/04	No 8
Transporter	2.0 - T5	07/04	06/11	No 9
Transporter	2.1	01/83	01/92	No 11
Transporter	2.4 TDi - T4	01/95	12/99	No 8
Transporter	2.5 - T4	01/94	12/04	No 8
Transporter	2.5 TDi - T4	05/95	12/04	No 8
Transporter	2.5 TDi - T5	07/04	08/04	No 9
Transporter	3.2 V6 - T5	09/04	06/11	No 9
Vento	GL	06/95	02/97	No 8

Make & Model	Model	Start	Finish	Pressure Test Adaptor
<b>Volvo</b>				
140 Series	142 - 145	01/68	12/75	No 3
164	164	01/69	12/75	No 3
240 - 960 Series		01/75	01/97	No 20
C30	1.6 - 2.5	03/07	06/11	No 15
C70	Turbo	09/99	09/04	No 20
C70		12/06	06/11	No 15
Cross Country		09/00	03/03	No 20
P122S - P1800S		01/62	12/73	No 20
S40	1.8	02/97	03/01	No 20
S40	T4	10/97	05/03	No 20
S40	2.0 (T) - Incl. Turbo	01/97	05/04	No 20
S40		02/04	06/11	No 15
S60	All	12/00	06/11	No 20
S70	2.3, 2.4	02/97	05/03	No 20
S80	D5	01/07	08/10	No 15
S80	2.5T	10/04	12/06	No 20
S80	2.8, 2.9	05/98	07/05	No 20
S80	3.2, 4.4	01/07	06/11	No 15
S90, V90	2.9	02/97	12/98	No 20
V40	1.8,T4,2.0 (T) incl. Turbo	02/97	05/03	No 20
V50	Incl. Diesel	03/04	06/11	No 15
V70		02/97	05/05	No 20
V70	T6, T6 R	03/08	06/11	No 15
V70R	R - MY04	11/03	06/05	No 20
XC60		10/09	06/11	No 15
XC60 (Diesel)	2.4 - D5 Twin Turbo	03/09	06/11	No 15
XC70		04/03	11/07	No 20
XC70	3.2	12/07	06/11	No 15
XC70 (Diesel)	2.4 - D5	12/07	06/11	No 15
XC90	2.5, 2.9, 3.2, 4.4, D5	06/03	06/11	No 20



**308390**

**Cooling System Tester Heavy Goods Vehicle**

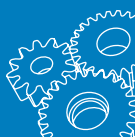
- Specialist cooling system tester for heavy goods vehicles and trucks
- Featuring seven specialist adaptors to suit some of the popular makes on Australian and New Zealand market
- Includes a heavy duty pump with a dual gauge (0-35 PSI, 0-2.5 Bar) and adaptor hose
- Professional 9 piece kit supplied in a blow mould case with custom moulded storage tray



**Application List**

Part No.	Adaptor No.	Make	Model	Year
308393	3	Mercedes Benz	Sprinter	1998-2006
			Vito	1998-2006
308394	4	Volvo	FH12	1993-1998
308395	5	MAN	L2000	1993-2000
308396	6	DAF	LF55	2001
		IVECO	EURO CARGO	1991-2013
			Euro Star	1993-2001
			Euro Tech	1993-2001
			Euro Trakker	1993-2001
			Euro Trakker Cursor	2002-2013
			Stralis Cursor	2002-2013
		MAN	E2000	2000-2013
			F2000	1995-2003
			F90	1987-1996
			TGA/L/M/S	2005-2013
		Mercedes Benz	Actros	1997-2013
			Atego	1998-2013
			Axor	2001-2013
		Volvo	FH12	1993-2013
			FL	2000-2013
FM	1998-2013			

Part No.	Adaptor No.	Make	Model	Year
308397	7	DAF	XF95	2002-2006
			XF 105	2005-2013
308398	8	ERF	EC RANGE	1996-2003
		Man	TGA	2000-2013
		Renault	Kerax	1999-2013
			Magnum	1990-2003
			Midlum	2000-2013
			Premium	1997-2013
308399	9	Scania	4 Series	1995-2004
			93	All
			94	1996-2004
			113	All
			114	1996-2004
			124	1996-2004
			144	1996-2002
164	1999-2004			



## 308380

### Cooling System Tester Truck - Tapered Adaptor

- Supplied with four expanding taper adaptors to suit larger radiators in trucks, off road machinery and plant equipment
- Suitable for Japanese, European and American style radiators
- The gauge is colour coded and the pump is constructed from Polyoxymethylene (POM), a high impact substance stronger than steel, yet able to withstand the corrosive factors of inhibitors ensuring a long service life
- Operator manual included



308382



308383



308384



308385



#### Contents

Part No.	Description
308301	Gauge & pump assembly
308382	Expanding taper 17–35mm
308383	Expanding taper 26.5–41mm
308384	Expanding taper 37–50mm
308385	Expanding taper 47–60mm



308301

## 308350

### Radiator Cap Pressure Adaptor Set

- Designed to suit the variable styles in radiator caps. Metal or plastic, screw or bayonet, narrow or standard neck fittings, internal or external. Cap adaptors are colour coded and fitted with quick-release couplings
- The kit is supplied without a pressure pump and gauge assembly, which may be purchased separately where required (Part No. 308553)
- Compatible with Toledo Cooling System Testers



308351



308352



308353



308354



308355



308356



308357



308358



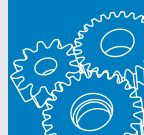
308359



#### Contents

Part No.	Item Code	Description
308351	1	Adaptor Cap Blue Bayonet Jap Ext Sml Honda, Lexus, Toyota & late Model Japanese Vehicles
308352	2	Adaptor Cap Orange Bayonet Jap Sml Ford, Honda, Nissan, Mitsubishi, Subaru & Toyota
308353	3	Adaptor Cap Black Bayonet Std 1 5/8"
308354	4	Adaptor Cap Orange M45 Screw Ext Renault & VAG
308355	5	Adaptor Cap Red M48 Screw Ext Citroen, Fiat, Peugeot, Renault & Volvo
308356	6	Adaptor Cap Yellow M52 Screw Ext BMW, GM, Ford, Landrover, VW
308357	7	Adaptor Cap Green M44 Screw Ext Renault & Volvo
308358	8	Adaptor Cap Black M52 Screw Ext BMW
308359	9	Adaptor Cap Black M62 Screw Ext Mercedes Benz

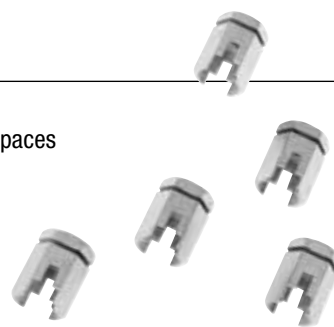




**308003**

## Radiator Petcock Socket Set

- Eliminates damage to brass petcocks on radiators during radiator servicing
- The square drive angle of each socket varies to enable ease of access in confined spaces
- 1/4" square drive
- 5 piece set



## Viscous Fan Hub Spanner

- Removes and replaces viscous fan hubs

Part No.	Size	Suits
<b>308235</b>	32mm	Ford 6 cylinder
<b>308236</b>	36mm	GM, Ford 8 cylinder



**308241**

## Fan Clutch Spanner Ford

- Special clutch holder and spanner take the hard work out of Ford water pump replacements
- 1 7/16" (36mm) and 2 5/16" (58mm) jaw opening
- 1/2" square drive fitted in tools for extra leverage



**308008**

## Spanner Set Fan Clutch

- Water pump pulley spanner and holder set
- Suits: BMW, Mercedes Benz, Ford and late model vehicles
- Contains locknut spanners 32, 36, 65 (mm) and fan belt service wrench for idler pulley tensioner nuts
- 10 piece set supplied in a blow mould case





## Thermometers

- Pocket style for checking fluid temperatures

Part No.	Dial Face (Ø)	Scale
<b>308001</b>	45mm	Dual scale - 40 to + 71 C° - 40 to + 160° F
<b>308002</b>	25mm	0° to 220°F scale Fahrenheit
<b>308557</b>	52mm	Dual Scale 0-200°C/0-400°F



**308001**



**308002**



**308557**

### 308010

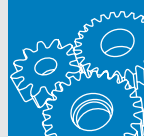
## Welch Plug Installer & Removal Kit

- Removes stubborn, hard to reach welch plugs
- Eliminates having to remove head or manifolds
- Includes ball-type installing swivel tool for easy positioning
- Adaptor sizes included: 20, 25, 30, 35, 40, 45, 50 (mm)

## Contents

Internal Diameter	External Diameter	Thread	Thickness
20mm	35mm	M27	1.5mm
25mm	35mm	M27	1.5mm
30mm	42mm	M27	1.5mm
35mm	45mm	M27	1.5mm
40mm	51mm	M27	1.5mm
45mm	60mm	M27	1.5mm
50mm	60mm	M27	1.5mm





## ENGINE

- Toledo offers a comprehensive range of trade quality professional compression testing solutions ranging from universal testers to comprehensive master kits
- For accurate and efficient engine cylinder compression problem diagnosis
- Range covers both petrol and diesel fuel applications

### 304500

## Compression Tester Kit Diesel Passenger Vehicles

- For diagnosis of compression related problems on diesel engines
- Suitable for automotive, commercial and heavy industrial applications with both direct and indirect diesel injection systems
- Set contains a pressure gauge and various extensions, glow plug and universal adaptors
- Designed with snap coupling connection system and pressure relief valve for simple and easy operation
- User manual included

### Contents

Part No.	Item	Description
304459	Gauge & hose assembly	0-70 BAR (0-1000PSI) 560mm
304462	Hose assembly	420mm
304501	Glow plug adaptor	M10 x 1.25 x 74mm
304502	Glow plug adaptor	M12 x 1.25 x 54mm
304503	Glow plug adaptor	M14 X 1.25 x 72mm
304504	Glow plug adaptor	M10 x 1.0 x 119mm
304505	Dummy injector	114mm, 21mm O.D.
304506	Stanadyne dummy injector	112mm, 19mm O.D.
304507	Glow plug adaptor	M10 x 1.25 x 114mm
304508	Dummy injector	M24 x 2.0 x 64mm
304509	Dummy injector	M20 x 1.5 x 75mm
304510	Replacement seal & washer set	
304457	Clamping plate	64 x 25 x 17mm



### 304550

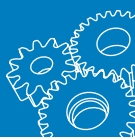
## Compression Tester UPGRADE Kit Diesel Commercial Vehicles

- Compression tester upgrade kit to suit Toledo Part No. 304500 to expand applications to include a wide range of commercial vehicles including trucks, tractors and some marine and industrial engine types
- User manual included

### Contents

Part No.	Item	Description
304451	Centre pillar	185mm - 5/16" x 24UNF (Int.) - 1/2" x 20UNF (Ext.)
304452	Spacer set	5 PC
304453	End adaptor	30 x 20mm O.D.
304454	End adaptor	32 x 24mm O.D.
304455	End adaptor	41 x 24mm O.D.
304456	Replacement seal & washer set	
304457	Clamping plate	64 x 25 x 17mm
304458	Clamping plate	76 x 25 x 17mm
304460	Adaptor (90° elbow)	54mm





**304450**

## Compression Tester Kit, Comprehensive Diesel Commercial Vehicles

- For diagnosis of compression related problems on diesel engines
- Suitable for commercial and heavy industrial applications with both direct and indirect diesel injection systems
- Sets contain a pressure gauge and various extensions and universal adaptors
- Designed with snap coupling connection system and pressure relief valve for simple and easy operation
- User manual included

### Contents

Part No. (Spare)	Description	Size
304459	Gauge & hose assembly	0-70 BAR (0-1000PSI) 560mm
304451	Centre pillar	185mm - 5/16" x 24UNF (Int.) - 1/2" x 20UNF (Ext.)
304452	Spacer set	5 piece
304453	End adaptor	30mm x 20mm O.D.
304454	End adaptor	32mm x 24mm O.D.
304455	End adaptor	41mm x 24mm O.D.
304456	Replacement seal & washer set	
304457	Clamping plate	64 x 25 x 17mm
304458	Clamping plate	76 x 25 x 17mm
304460	Adaptor (90° elbow)	54mm
304462	Hose assembly	420mm



**304198**

## Compression Tester Kit Petrol Quad Calibrated

- For diagnosis of compression related problems on petrol engines
- Suitable for automotive and small engine repairs
- Sets contain a pressure gauge and various extensions, thread chasers and universal adaptors
- Gauge is quad calibrated: 0-300 PSI, 0-21kg/cm<sup>2</sup>, 0-21 Bar, 0-2100kPa
- User manual included

### Contents

Description	Size
Gauge, quad calibrated	63mm diameter with pressure relief valve
Hose	315mm includes 14mm & 18mm adaptor
Extension	150mm includes universal rubber cone



**304009**

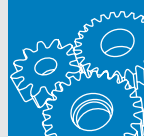
## Compression Tester Kit Petrol Dual Calibrated

- Versatile kit provides a quick means of testing cylinder compression pressure on engines with deep, recessed spark plugs and difficult access
- Tapered cone adaptors provide allow for multi size application
- Special air hold valve is included for easy resetting of the gauge
- Dual graduated up to 0-300 PSI (0-21kg/cm<sup>2</sup>)
- User manual included

### Contents

Description	Size
Gauge	58mm diameter
Extension	100mm
Adaptor, straight	85mm
Adaptor, 30°	85mm
Replacement seals	7 piece set





**304010**

**Compression Tester Kit Petrol**

- Versatile kit provides a quick means of testing cylinder compression pressure on engines with deep, recessed spark plugs and difficult access
- Special air hold valve is included for easy resetting of the gauge
- Dual graduated up to 0–300 PSI (0–21kg/cm<sup>2</sup>)
- Set contains long flexible hose and adaptors, eliminates the need to remove secondary equipment such as A/C, power brake, manifold and steering components
- User manual included

**Contents**

Description	Size
Gauge & hose assembly	0–300 PSI (0–21kg/cm <sup>2</sup> )
Gauge & hose assembly – quick check	M14 x 1.25 & M18 x 1.5, 0–200 PSI
Hoses	M14 x 1.25 x 300mm (short thread 10mm)
	M14 x 1.25 x 300mm (long thread 18mm)
	M18 x 1.5 x 300mm (short thread 10mm)
Adaptor, solid short	M10 x 1.0 x 42mm
	M12 x 1.25 x 42mm
Adaptor, solid long	M18 x 1.5 x 64mm
Air hose adaptor	38mm
Replacement seal & valve kit	Contains 8 seals & 2 pressure relief valves
Hose assembly	420mm



**304350**

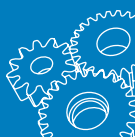
**Compression Tester Kit, Comprehensive Petrol**

- Versatile kit provides a quick means of testing cylinder compression pressure on engines with deep, recessed spark plugs and difficult access
- Special air hold valve is included for easy resetting of the gauge
- Dual graduated up to 0–300 PSI (0–21kg/cm<sup>2</sup>)
- Comprehensive kit designed for petrol engines with 10, 12, 14, 18 (mm) spark plug ports
- Comes complete with various extensions and thread chasers as well as a seal replacement set
- User manual included

**Contents**

Part No. (Spare)	Description	Size
304359	Gauge & hose assembly, quick test style	M14 x 1.25, M18 x 1.5
304351	Thread chaser	M14 X 1.25 & M18 x 1.5
304352	Thread chaser	M10 x 1.0 & M12 x 1.25
304353	Extension	M10 x 1.0 x 65mm
304354	Extension	M12 x 1.25 x 65mm
304355	Extension	M14 x 1.25 x 70mm
304356	Extension	M14 x 1.25 x 100mm
304357	Extension	M18 x 1.5 x 65mm
304358	Service kit	Contains 8 seals & 1 pressure relief valve





**304012**

## Cylinder Leak Down Tester Petrol

- Provides critical information about an engines compression
- Simplifies carrying out leak down tests which can be more accurate than standard compression tests
- Used to identify and detect a number of engine faults including: worn piston rings, worn valves, cracks in cylinder walls and blown head gaskets
- Gauges show percentage of cylinder leakage and cylinder pressure
- Suitable for use on any petrol engine with either a 14mm or 18mm spark plug
- Set contains pressure gauge, cylinder leakage gauge, 14mm and 18mm spark plug adaptors, quick connect/disconnect hose, air regulator
- User manual included

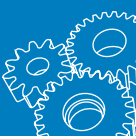


## Glow Plug Socket Sets Universal Jointed 3/8" Sq. Dr.

- For simple removal and replacement of glow plugs
- Designed to grip glow plug firmly
- Universal joint improves access to difficult and restricted areas
- Manufactured from high grade chrome vanadium steel
- Overall length: 150mm each

Part No.	Contents	Size
<b>304043</b>	Six sockets	8, 9, 10, 12, 14, 16 (mm)
	Six sockets	8, 9, 10, 12, 14, 16 (mm)
<b>304044</b>	Two decarbonising drills	M12 x 1.25 x 125mm M10 x 1.00 x 135mm
	One puller	130mm

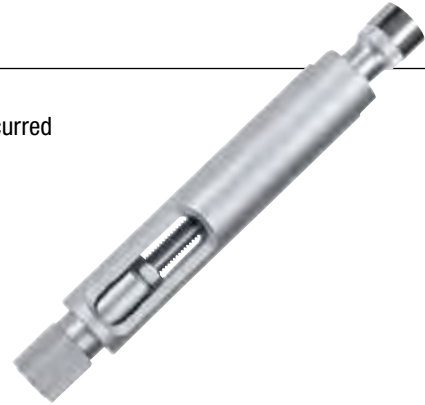




**304045**

**Glow Plug Puller Common Rail Diesel Mercedes Benz**

- Used for the unscrewing and disassembly of glow plugs in the cylinder head
- Particularly useful on stuck glow plugs where carbonisation and corrosion has occurred
- Eliminates the need to remove the cylinder head
- Suits 10mm CDI engines including all Mercedes Benz 10mm glow plugs. Engine codes 611, 612, 613 etc.



**Piston Ring Compressors**

- For quick and easy installation of pistons and rings into the engine cylinders
- Feature self-locking ratchet assembly and wide band design to enable all piston rings to be compressed in one easy operation
- Spring steel band wraps around the rings and piston
- Adjustable bore diameter using adjusting key provided
- Manufactured from high grade spring steel

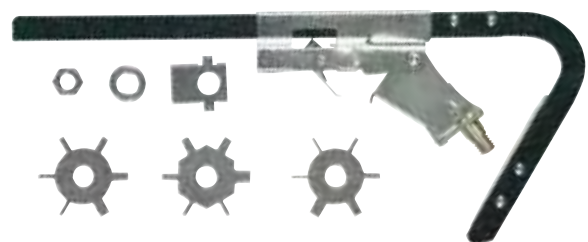
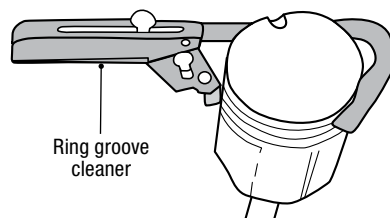
Part No.	Height	Capacity
<b>304189</b>	75mm	53–125mm (2"–5")
<b>304190</b>	100mm	60–175mm (2 3/8"–7")

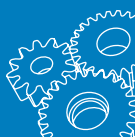


**304193**

**Piston Ring Groove Cleaner**

- For cleaning accumulated carbon and material build up inside the piston ring groove
- Suitable for use on pistons 51–127mm (2"–5")
- Features three six-sided cutters suitable for both Metric and SAE pistons  
 SAE – 1/16", 5/64", 1/8", 5/32", 3/16", 1/4"  
 Metric – 2.0, 2.5, 3.0, 4.0, 4.5 (mm)  
 Metric – 1.2, 1.5, 1.8, 2.8, 5.0, 5.5 (mm)





**304400**

## Oil Pressure Tester Kit

- Fully functional, quality testing unit which provides trade professionals with the perfect solution for diagnosing worn oil pumps, pressure switches and oil warning indicators
- Large 80mm diameter gauge with dual scale 0-140 PSI (0-10 Bar)
- Snap coupling adaptors with shut-off valve allow for speed and safe operation
- Permanently oil primed, long (1300mm) flexible pressure hose and blow-off valve
- Superior modern design, compact and organised. Ideally suited for use by the trade on a wide range of vehicles and stationary motors
- Snap couplings provide for fast and efficient testing. The 90° adaptor permits excellent subsidiary access to hard to reach areas
- User manual included



### Contents

Part No.	Description
304415	Gauge & hose assembly
304401	Adaptor R1/8 DIN 2999
304402	Adaptor 1/8" NPT
304403	Adaptor 1/4" NPT
304404	Adaptor 3/8" UNF
304405	Adaptor 1/2" UNF
304406	Adaptor M10 x 1.0
304407	Adaptor M12 x 1.5
304408	Adaptor M14 x 1.5
304409	Adaptor M16 x 1.5
304410	Adaptor M18 x 1.5
304411	Adaptor 90° Elbow

### Applications:

Alfa	Hyundai	Peugeot
Audi	Isuzu	Renault
BMW	Jaguar	Saab
Citroën	Lada	Skoda
Daihatsu	Lancia	Subaru
Fiat	Mazda	Suzuki
Ford	Mercedes	Toyota
Honda	Mitsubishi	Vauxhall
Holden	Nissan	Volkswagen
	Opel	Volvo

**306000**

## Valve Collet Tool Installer & Remover

- For quick and easy replacement of tapered split collets on recessed valve springs
- Spring loaded body and clips allow for simple and secure installation of valve spring collets
- Once the valve spring is compressed, one end positions while the other magnetically collects the collet
- Suitable for use on 16 and 24 valve engines
- Overall length: 210mm



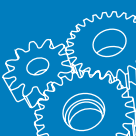
**304188**

## Valve Lifter/Puller

- For use in the removal of hydraulic valve lifters from the lifter bed
- Features 7.5mm diameter shaft to insert into the push rod cavity
- Design allows the tip to expand within the lifter and clamp strongly on tappet walls for safe and easy removal
- Capacity: 13–19mm
- Overall length: 280mm







**304040**

## Valve Lifter/Puller Heavy Duty

- For use in the removal of tight hydraulic lifters
- Expanding collet and slide hammer assembly aids in the removal of even the tightest valve lifters
- Capacity: 15–20mm
- Overall length: 350mm



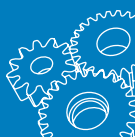
## Valve Spring Compressors

- For use in the removal and servicing of engine valves and seals during cylinder head or engine repair
- Suitable for use on a wide range of OHC, OHV, CVH valve applications
- Available in various cam lock lever designs featuring adjustable capacity, locked and reversible jaws
- Cam design enables servicing or repairs without cylinder head removal
- Premium quality steel construction ensures safe operation and tool longevity

## Valve Spring Compressors Adjustable Lever Cam

Part No.	Description	Capacity	Throat Clearance	Notes
<b>304181</b>	Universal	75–165mm	150mm	Small / Medium OHC applications
<b>304182</b>	Offset jaws	75–165mm 75–185mm	245mm	Larger engine applications with deep seated valve springs
<b>304183</b>	Multi valve reversible jaw	45–145mm	250mm	Reversible jaw with dual adaptor size (25, 30mm)
<b>304184</b>	Universal reversible jaw	75–140mm	150mm	OHC & CVH applications





## Valve Spring Compressors Puller Design

- Puller design enables servicing or repairs without cylinder head removal
- For use on a wide range of OHV, OHC and CVH engines
- Allows valve springs and valve stem oil seals to be replaced without removing the cylinder head
- Offset jaws easily grip and compress valve springs
- 304187 features a reversible jaw/adaptor and automatic cam-action locking to a pre-determined setting

Part No.	Spread	Reach
<b>304039</b>	50mm	60mm
<b>304186</b>	100mm	60mm
<b>304187</b>	100mm	110mm



**304039**



**304186**



**304187**

### 304185

## Valve Spring Compressor

- For use in the removal and servicing of engine with side valve applications (including Briggs and Stratton)
- Adjustable plier locking design
- Solid metal construction
- Overall length: 230mm



### 301486

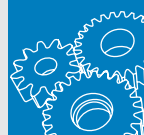
## Valve Spring Compressors On Car Adjustable Lever Cam

- Enables removal and replacement of valve stem oil seals and valve spring eliminating cylinder head removal
- Universal kit features multi hole adjustable handle and interchangeable valve spring adaptors to enable unlimited setting combinations
- Collet sizes: 19–24mm, 19.2–25.5mm, 19.2–26mm, 27.5–33.5mm and one universal adaptor

### Simple to use:

1. Mount the adaptor to a fixed location on the cylinder head
2. Select the suitable adaptor compatible with the valve retainer and install to the tool main rod
3. Position the tool main rod above the valve spring to be removed using the correct adjustment hole on the pivot arm
4. Using the tool lever arm depress the valve spring as required

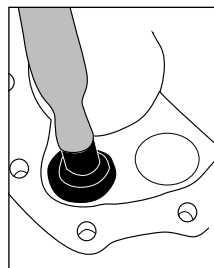




## Valve Lapper

- Manufactured with contoured hardwood handles for comfortable grip
- Four different size neoprene cups for varying valve diameters
- Resistant to grease, oil and petrol

Part No.	Length	Cup Size	Qty
<b>304191</b>	200mm	28 x 35mm	1 PC
<b>304192</b>	200mm	16 x 21mm	2 PC
		28 x 35mm	



## 304032

### Valve Lifter Bleed Tool Ford V8

- For use during engine repairs or when carrying out valve clearance check on 5 Litre V8 Ford engines
- Designed to use leverage to bleed oil from hydraulic lifters enabling valve clearance checking
- Suits early and late model Fords with hydraulic lifters
- Moulded rubber handle

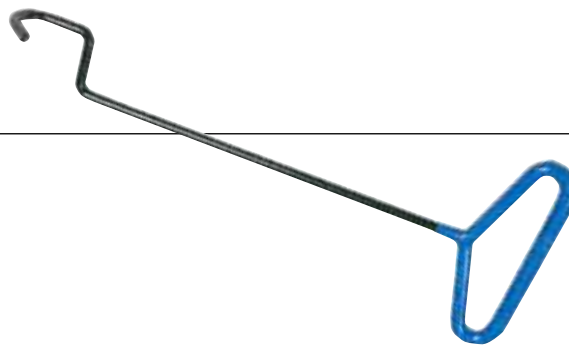


## EXHAUST

## 312291

### Exhaust Donut Stretcher

- For removal and installation of ring type (donut) rubber hangers
- Simple tool used by slipping the tool hook through the rubber mounting ring and pushing or pulling to stretch, until the ring can be removed from the hook on the frame

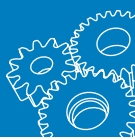


## Exhaust & Tailpipe Cutters

- Two styles of cutters used to cut exhaust tubing easily without the need to exert pressure
- Chain with in-built roller cutters slice into the exhaust pipe tubing
- Able to cut wall tube pipe from 20-82mm diameter

Part No.	Handle	Cutting Capacity	Part No. (Replacement Cutter Chain)
<b>312290</b>	Lock grip style	60mm O.D.	312293
<b>312295</b>	Plier style	82mm O.D.	312296

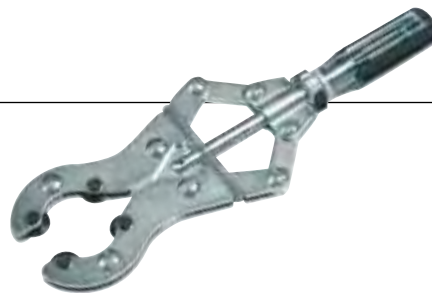




**312292**

## Muffler Tailpipe & Strut Tube Cut Off Tool

- Cuts round and out of round pipes
- Manually operated roller cutter wheels slice through tubing quickly and easily
- Working range 35-64mm (1<sup>3</sup>/<sub>8</sub>" to 2<sup>1</sup>/<sub>2</sub>")
- Replacement blade set (four piece) Part No. 312294



## Exhaust & Tailpipe Expanders

- Internal expanding tool which operates with wrench for all tailpipe expanding
- Inside hex nut is turned to expand the inside diameter of the tube
- Extra long hex rod for ease of use

Part No.	Diameter
<b>312287</b>	29-44mm
<b>312289</b>	38-64mm
<b>312288</b>	54-89mm



**321003**

## Exhaust Pipe & Tailpipe Service Kit

- Professional exhaust pipe service kit for expanding, cutting, dent removal and fitting of steel pipe

### Contents

Part No.	Description	Application	Qty
312291	Exhaust donut stretcher	<ul style="list-style-type: none"> <li>• Removes and installs ring type (Donut) rubber hangers</li> <li>• Simply slip the tool hook through the rubber-mounting ring then push or pull to stretch, until the ring can be removed from the hook on the frame</li> </ul>	1
312290	Exhaust pipe cutter	<ul style="list-style-type: none"> <li>• Lock grip handle design cuts exhaust tubing easily without needing to exert pressure</li> <li>• Cuts up to 2.5mm thickness and 60mm outer diameter</li> <li>• Bike chain with in-built roller cutters slice into the tube as the T handle on the lock grip is activated</li> </ul>	1
301288	Nut splitter (Sizes: 16-22mm)	<ul style="list-style-type: none"> <li>• Splits stubborn and seized nuts from sizes 16-22mm</li> <li>• Spanner size 19mm</li> </ul>	1
312289	Exhaust pipe expander (Diameter 38-64mm)	<ul style="list-style-type: none"> <li>• Operate with wrench. Inside hex is turned to expand the inside diameter of the tube</li> <li>• Extra long hex rod for ease of use</li> </ul>	1
312288	Exhaust pipe expander (Diameter 54-89mm)	<ul style="list-style-type: none"> <li>• For all exhaust pipe expanding</li> </ul>	1



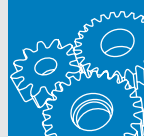
## HOSE & PIPE DISCONNECT TOOLS

**307221**

## Fuel Line Quick Disconnect Tool

- Scissor type operation for spring lock couplings
- Durable, lightweight metal construction
- Releases 5/16" and 3/8", fuel line locking on Chrysler, Ford, GM and Mazda vehicles





**307222**

## A/C & Fuel Line Disconnect Tool Set

- Four piece set services most types of quick-disconnect fittings used on Chrysler, Ford and GM vehicles

### Contents

Description
Chrysler/ Ford/ GM fuel line disconnect tool
Ford fuel line coupling tool
Ford/GM quick-disconnect coupler tool
A/C & fuel line spring lock coupling tool



**307002**

## Fuel Line Disconnect Tool Set

- Designed for safe and easy removal of quick connect fuel lines without causing damage
- Simply clip over the connector and release the spring lock
- Suitable for late model vehicle applications including Chrysler, Ford, GM-Astra, Commodore, Vectra, Mitsubishi

Colour	Size
Blue	3/8" connectors
Red	5/16" connectors
Black	1/4" connectors



**301060**

## A/C & Fuel Line Disconnect Set

- 7 piece set of hose removal tools designed specifically to remove spring lock coupling type hose fittings
- Ideal for fuel lines and air conditioning system pipes found on Chrysler, Ford and GM applications
- Manufactured from moulded nylon ensuring flexibility and strength to withstand fuel and air conditioning chemicals
- Set includes sizes: 6, 8, 10, 12, 16, 20, 22 (mm)

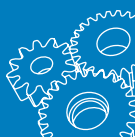


**301061**

## Fuel Line Disconnect Set

- Convenient fuel line disconnect tool set featuring 4 different sized tools designed for the removal of fuel line fittings
- Separate spring lock coupling type hose fittings with simple attach and push operation
- Manufactured from durable anodized aluminium for superior quality and convenience of colour-size selection
- Sizes include: 1/4, 5/16", 3/8", 1/2"





**301400**

## Master Disconnect Tool Set

- This comprehensive master kit is the ideal hose, line and pipe disconnect set for the workshop or garage
- Suitable for fuel lines, refrigerant pipes, cooling and vacuum hoses with spring lock couplings, or conventional clamp fittings
- Sizes included: 5/16", 3/8", 1/2", 5/8", 3/4"
- 21 piece set



**301038**

## Quick Fluid Stopper Set

- For quick and effective fluid stoppage on fuel hoses
- Suits fuel injection hoses or fuel supply hose adaptors
- Choose suitable stopper or clamp for application and apply
- 12 piece set

Description	Specifications	Qty	Operation
Extension hose clamp	Length: 310mm Application size: 25.4mm Ø	1	
Injection hose clamps	Length: 82mm, Width: 24mm Ball stopper size: 18mm Ø	2	
Fuel supply adaptor clamps	Length: 82mm, Width: 24mm Ball stopper size: 10.4mm Ø Concave size - Length: 13.6mm, Width: 8.3mm	2	
Fuel line stoppers	Handle Length: 40mm, Width: 14mm, Head sizes: 3/16", 1/4", 5/16" hoses	6	
Fuel pipe separator	Length: 63mm, Width: 22mm Concave size: 8.8mm Ø, Concave depth: 14mm	1	

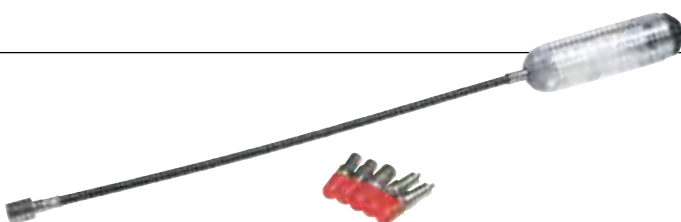


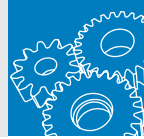
## FUEL

**307224**

## Carburetor Adjusting Tool

- Suits idle screws on Chrysler and GM vehicles
- Heavy-duty flexible shaft for easier access
- Includes four adaptors within the handle
- Adaptors include:
  - Double D for GM 1979 onwards
  - 1/4" hex for GM 1978 onwards
  - 3/32" hex for Chrysler 1978 onwards
  - 4.5mm hex for GM 1978/9

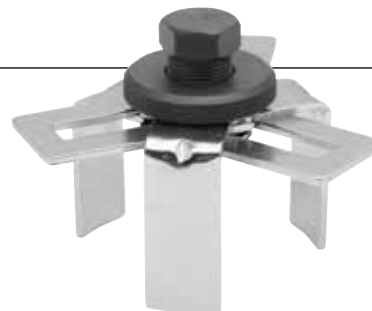




**307001**

## Fuel Tank Retaining Ring Remover

- Three legged fuel tank puller suitable for the removal and replacement of fuel tank retaining rings found on fuel tank sender units
- Suitable for universal use with a working size range of 75-160mm
- Features a 24mm hex drive



## Fuel Return Flow Testers Common Rail Diesel (CRD)

- Test kits designed to measure the flow from the return side of common rail diesel injectors to aid in the diagnosis of:
  - Poor running
  - Engine start difficulties
  - Poor acceleration/power loss
- Generally the cylinder with the most diesel return flow is the faulty injector as it allows less fuel to the engine
- No return fuel is an indication the system has either no fuel pressure or reduced fuel pressure on the primary delivery side
- Kits include measuring blocks with hoses, reduction pipes and adaptors for Bosch, Delphi, Denso and Siemens injectors
- User manuals included
- Both kits perform the same task
- Measures up to 6 injectors simultaneously

Part No.	Description	Features
<b>307007</b>	Quick connect style hose adaptors	Glass single port measurement bottles
<b>307008</b>	Standard style hose adaptors	Plastic dual port dual chamber measurement bottles

**307007**



**307008**



**307233**

## Fuel & Vacuum Pump Pressure Tester

- Simple and effective kit to test for worn or defective components in mechanical fuel pumps and vacuum systems
- Extra long heavy duty 1.2 metre rubber hose and both 14mm and 18mm manifold adaptors
- Large 90mm diameter gauge with colour coded easy reading scales
- Vacuum: 0–30 Hg (0–70 cmHg)
- Pressure: 0–14.7 PSI (0–1.1 kg/cm<sup>2</sup>)





**307300**

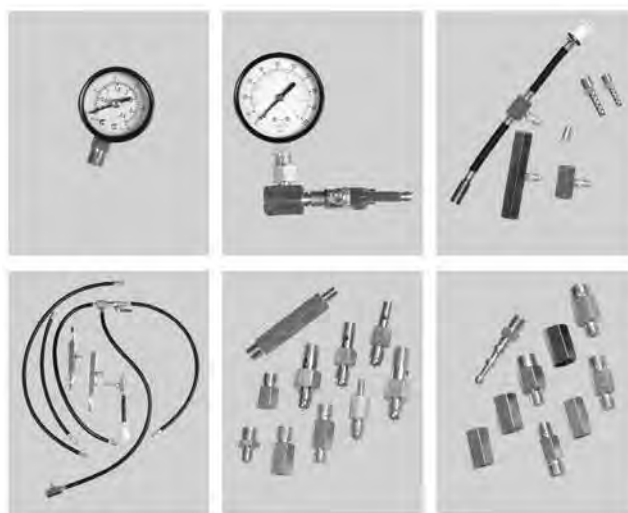
## Pressure Tester Master Kit Fuel Injection

- Comprehensive kit suitable for testing fuel delivery pressure on both mechanical and electronic fuel injection systems
- Used to pinpoint and identify problems in filters, lines and regulators
- Includes assorted range of hoses, banjo bolts, hose barb fittings and unions necessary to adapt to early and later model vehicles
- Fuel injection pressure outside of the manufacturer's specifications will result in poor engine performance, difficult engine start, backfire, misfire, higher than normal fuel consumption and incorrect CO levels
- To identify components markings are made on the component, on the box or both
- Spare parts available on request as a special order
- User manual included

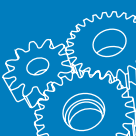


### Contents

Item Code	Description
2	Pressure gauge 0-50 PSI (0-3.5 Bar)
1	Pressure gauge 0-100 PSI (0-7 Bar)
10	Pipe plug 1/4" x 1/4" (6mm x 6mm)
19	Hose barb 5/16" x 1/4" NPT
20	Hose barb 1/4" x 1/4" NPT
7	Adaptor ford spring lock
3	Adaptor 1/4" (6mm) NPT tee with valve
6	Adaptor T.B.I. GM
4	Adaptor GM quick connect
5	Adaptor GM 2.2K
8	Adaptor Ford pair pin
-	Adaptor hose 13" (325mm) Ford
-	Hose bleed-off
-	Hose Bosch C.I.S (27 1/2"/698mm)
-	Hose 24" basic (610mm)
22	Banjo bolt 8mm-1.00
23	Banjo bolt 10mm-1.0
24	Banjo bolt 12mm-1.25
25	Banjo bolt 12mm-1.50
21	Adaptor Honda
30	Adaptor 12mm-1.5 Male x 10mm-1.00 Male x 1 9/16"
31	Adaptor 12mm-1.5 Male x 10mm-1.00 Female x 1 1/4"
32	Adaptor 12mm-1.5 Male x 8mm-1.00 Female x 5/16"
9	Adaptor 12mm-1.5 Male x 8mm-1.00 Male
14	Adaptor 12mm-1.5 Male x 8mm-1.00 Male x 3"
27(A)	Adaptor 12mm-1.5 Male x 5/8-18mm-1.5 Male x 1 9/16"
17(A)	Union 5/8"-18
26(A)	Adaptor 12mm-1.5 Male x 16mm-1.5 Male x 1 9/16"
18(A)	Union 16mm-1.5
16(A)	Union 14mm-1.5
29(A)	Adaptor 12mm-1.5 Male x 14mm-1.5 Male x 1 9/16"
15(A)	Union 1/4" PT-19
30	Adaptor 12mm-1.5 Male x 1/4" PT- 19 Male x 1 9/16"
13(A)	Hose barb 12mm-1.5 Male x 1/4"- 3/8"







**307003**

**Pressure Tester Kit Fuel Injection Multi-Port**

- Kit suitable for performing running, residual, rail and flow rate pressure tests
- Includes adaptors, hoses and fittings to test fuel injection systems
- Kit includes fuel bolt with seal, single ended reusable hose end, double ended reusable hose end, GM Schrader hose, extra long drain hose, Ford Schrader hose and pressure gauge (0–150 PSI, 0–1000 kPa)
- User manual included



**307004**

**Pressure Tester Kit Injector Return Flow, Common Rail Diesel (CRD)**

- For testing the return flow pressure from common rail injectors of Bosch, VDO/Siemens and Delphi engine systems
- Suitable for testing the condition of a Piezo pass or fail statement
- Kit includes two pressure gauges. Gauge 1 (1–3 Bar) suitable for testing Delphi injectors and Gauge 2 (1–15 Bar) for testing Bosch and VDO Siemen injectors
- Also includes connecting lines, transparent body, return flow connectors, injector connectors, drain valve and tube and quick coupling
- User manual included



**307226**

**Signal Test Set Noid Light & IAC**

- The most economic way to check electronic fuel injection (EFI) and idle air control signals
- Works fast and easily checks Fleet PIN, Ford TBI, GEO TBI, Bosch PFI, Bosch 2, GM TBI, GM Multitech, GM PFI, GM SCPI and GM square 4 pin, GM Flat 4 pin
- Simply disconnect the component and plug the noid light into the wiring harness connector and then crank the engine
- A bright LED flash indicates signal operation

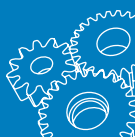


**Contents**

Part No.	Description
307227	Noid light suits Bosch PFI (round pins)
307228	Noid light suits Ford TBI
307229	Noid light suits GEO TBI
307230	Noid light suits GM TBI
307231	Noid light suits GM PFI
307232	Noid light suits GM SCPI
307234	Noid light suits Bosch 2
307235	Noid light suits GM Multitech
307236	IAC signal test light Sq 4 Pin
307237	IAC signal test light Flat 4 Pin



Noid lights and IAC signal test lights are also available individually to manufacturer for identification purposes only



## LUBRICATION

**305380**

### Pneumatic Fluid Extractor

- Ideal for use on cars, trucks, agricultural and stationary engines
- Suitable for extracting engine oils, transmission, gear oils, power steering fluid
- Capacity: 5 litres
- Pressure: 620 kPa (90 PSI, 6.2 Bar)
- Operating Instructions
  1. Remove dipstick
  2. Insert extraction tube
  3. Connect to air supply
  4. Turn on to remove oil or fluid



**305264**

### Oil Measure Clip Lid

- Suitable for use with non-corrosive liquids
- Features detachable flexible spout and cover lid for easy pouring
- **Capacity:** 5 litres



### Oil Measure Screw Lid Dual

- Flexible spout
- Manufactured from translucent high density polyethylene construction for transferring non-corrosive liquids
- Dual scale litres and quarts



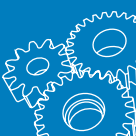
Part No.	Capacity
<b>305039</b>	1 litre (1 quart)
<b>305040</b>	5 litre (5 quart)

**305095**

### Watering Can

- Suitable for all refilling
- Ideal for under the bonnet level refilling e.g. radiator, battery, windscreen washer etc.
- Plastic, curved spout
- Capacity: 10 litres





## Oil Drain Pan

- For use with fuel oils, mineral oils, synthetic, antifreeze, etc.
- Resistant to most chemicals, solvents and even hot oil
- Made of durable high density polyethylene with UV stabilizer

Part No.	Capacity	Size
<b>305381</b>	6.6 litres	35.5cm diameter x 10cm deep
<b>305382</b>	14 litres	45cm diameter x 15cm deep



**305381**



**305382**

## Oil Drain Pan Portable

- Storage and evacuation oil drain pans
- Ensures safe transportation and storage without spillage
- Manufactured from strong durable plastic

Part No	Capacity	Size
<b>305090</b>	10 litres	58 x 14 x 33 (cm)
<b>305091</b>	17 litres	70 x 14 x 40 (cm)

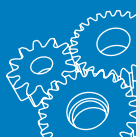


### **305053**

## Fluid Drain Pan Transmission

- Unique design for use in servicing vehicle transmissions and gearboxes
- Large surface area ensures effective waste fluid collection
- Features pouring spout to reduce spillage
- Manufactured from strong durable plastic
- Capacity: 17.3 litres
- Size: 82L x 54.5W x 20D (cm)





**305600**

## Waste Oil Drain Tank Gravity Feed

- Oil drain with wheel mounted tank for gravity draining of motor, engine, gearbox and differential oils, transmission and power steering fluids etc. from all types of motor vehicles placed on auto lift or a pit
- Centrally mounted 10 litre (10.50 quart) capacity bowl is height adjustable and can be optimally positioned allowing oil draining as well as other maintenance operations
- Bowl comes fitted with anti splash screen
- Durable all steel design and reinforced castors; the unit provides a safe and affordable option for draining, transferring and evacuating oil
- Designed for excellent mobility, easy bowl positioning and simple to use gravity evacuation
- Comes complete with 355mm (14") telescopic bowl with height adjustment option
- Tank comes fitted with sight gauge to check waste oil level and a drum tap to drain oil out
- Not for use with fuels and corrosive media

### Specifications

Description	Size
Tank capacity	50 litres (13 gallons)
Bowl capacity	10 litres (10.5 quarts)
Bowl inner diameter	355mm (14")
Height (Max.)	1.62m
Height (Min.)	1.1m



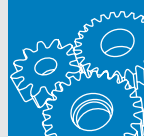
**305075**

## Copper Drain Plug/Sealing Rings Assorted, 450 Piece

- Copper washers and sealing rings in popular sizes
- Packed in a transparent sturdy hinged acrylic case
- Assorted pack contains 450 washers

External Diameter	Internal Diameter	Thickness
15mm	7mm	2mm
15mm	7.5mm	1mm
15mm	7.5mm	1.5mm
15mm	7.5mm	2mm
15mm	7.5mm	2.5mm
15mm	7.5mm	3mm
16mm	7.5mm	1.5mm
16mm	7.5mm	1.7mm
15.5mm	7.5mm	2mm
16mm	7.5mm	2mm
16.4mm	7.4mm	2mm
20mm	9.4mm	0.9mm
13.85mm	7.3mm	1.4mm
14.6mm	7.5mm	1.3mm
14.6mm	7.5mm	3mm





## Funnels

- Heavy duty polypropylene construction
- Designed with special contours in the funnel body for easy handling
- Anti splash and spill proof, with rim of funnel curved in
- Complete with wire mesh screen, dust cover and flexible spout
- Available in 2 sizes - the larger size includes drum bung attachment, which allows the funnel to be mounted direct onto drums with 2" threaded opening
- Manufactured in translucent white to give a clear view of fluid level

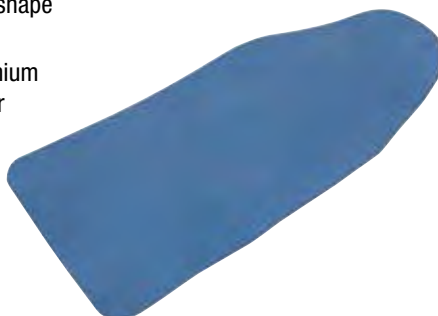
Part No.	Capacity	Diameter	Spout Length
<b>305388</b>	1.7 litres	205mm	170mm
<b>305389</b>	3 litres	240mm	245mm



### 305094

## Mouldable Funnel

- A simple and effective flexible rubber funnel for draining fluids from vehicles and equipment such as cars, trucks, motorcycles, aircraft, boats, generators etc.
- Bend, fold and mould to create a desired shape
- Eliminates potential spillage and mess
- Manufactured using a thin piece of aluminium encased in a thick coating of nitrile rubber
- Size: 370 x 170 x 3 (mm)



### 310004

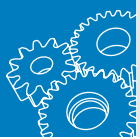
## Oil Filling Hopper 1 Litre

- Handy engine oil top up funnel with six adaptor fittings to allow easy and mess free filling

### Contents

Item	Description
Funnel capacity	1 litre
Angled extension	Aluminium for increased access & ease of use
Sealing connector adaptor	BMW V6 & V8 (1996-2013)
	Dodge Sprinter
	Mercedes Benz 112 & 113 engines
Bayonet adaptor fitting	VAG 1.8T, 1.9 TDI, 2.0T, 2.8L, 3.0L, 3.2L, 3.6L, 4.2L
	Volvo 2.5T
Threaded adaptor (M42 x 4.5)	BMW, Dodge, Mercedes Benz, VAG
Threaded adaptor (M37 x 3.0)	Subaru all models (exc. Tribeca)
Threaded adaptor (M35 x 4.0)	Lexus & Toyota (exc. Prius & Yaris) with threaded oil filler caps
Threaded adaptor (M32 x 3.5)	Most Mazda
	Some Ford, Jaguar, Honda, Mazda & Nissan





## 305216

### Male Sump Plug Remover Set

- 9 SAE and 8 Metric sizes in each tool of this popular two piece drain plug removal set
- 2 piece set

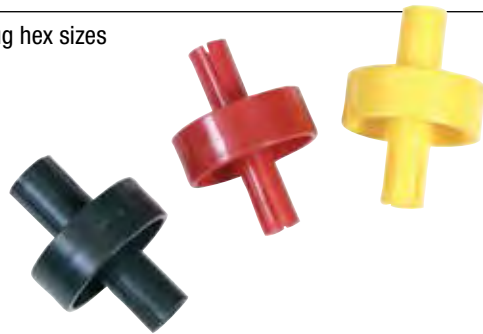
Size SAE	Size Metric
3/16"	10mm
1/4"	11mm
3/8"	12mm
7/16"	13mm
1/2"	14mm Hex
9/16" Hex	14mm Sq. Dr.
9/16" Sq. Dr.	15mm
5/8"	17mm
3/4"	



## 305215

### Sump Plug Remover Set

- Contains three durable, high impact, double-ended tools to fit most drain plug hex sizes
- Protects hands from both the hot drain plug and oil
- Holds the drain plug for installation
- 3 piece set



## 305300

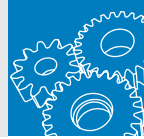
### Drain Plug Remover Set

- Oil drain plug set for the removal and installation of drain plugs on engine sumps, gearboxes or differentials
- All keys have a 3/4" (19mm) A/F hexagon body for use with a socket 3/8" square drive T bar
- Adaptors suitable for internal square and hex style plugs
- 12 piece set

#### Contents

Part No.	Description
305301	T bar sliding
305302	Drain plug remover hex 8mm
305303	Drain plug remover hex 9mm
305304	Drain plug remover hex 10mm
305305	Drain plug remover hex 12mm
305306	Drain plug remover hex 14mm
305307	Drain plug remover hex 17mm
305308	Drain plug remover hex 3/8"
305309	Drain plug remover Sq. Dr. 5/16", 8mm
305310	Drain plug remover Sq. Dr. 11mm
305311	Drain plug remover Sq. Dr. 13mm
305312	Drain plug remover Sq. Dr. 3/8", 10mm





**305003**

## Oil Drain Plug Remover Set

- Oil drain plug set for the removal and installation of drain plugs on engine sumps, gearboxes or differentials
- All keys have a 3/4" (19mm) A/F hexagon body for use with a socket 3/8" sq dr T bar
- Adaptors suitable for internal square, hex and triangle style plugs
- 17 piece set supplied in a blow mould case

### Contents

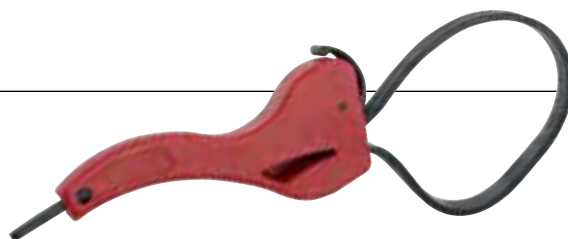
Part No.	Description
305301	T bar sliding
305302	Drain plug remover hex 8mm
305303	Drain plug remover hex 9mm
305304	Drain plug remover hex 10mm
305305	Drain plug remover hex 12mm
305306	Drain plug remover hex 14mm
305307	Drain plug remover hex 17mm
305309	Drain plug remover Sq. Dr. 5/16", 8mm
305310	Drain plug remover Sq. Dr. 11mm
305311	Drain plug remover Sq. Dr. 13mm
305312	Drain plug remover Sq. Dr. 3/8"
305010	Drain plug remover Sq. Dr. 3/8" x 10mm Female
305011	Drain Plug remover TRI 10mm
305012	Drain plug remover Sq. Dr. 7mm
305013	Drain plug remover Sq. Dr. 9mm
305014	Drain plug remover Sq. Dr. 10mm
305015	Drain plug remover Sq. Dr. 12mm



**305044**

## Rubber Strap Wrench 150mm

- Universal rubber strap wrench for removal of filters, caps, tubes up to 150mm diameter
- Conforms to irregular shapes for removal without damage
- Strap width: 20mm



**305208**

## Filter Remover Socket Drive (Chain)

- 400mm chain removes filters in confined areas
- Services filters to 110mm maximum diameter
- May be used with 1/2" square drive extension bar and ratchet etc.

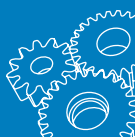


**305211**

## Oil Filter Remover

- Sturdy non-slip nylon strap handles spin-on type filters to 150mm (6") diameter
- Uses 1/2" square drive tool e.g. ratchet, angle or power bar
- Strap width: 50mm

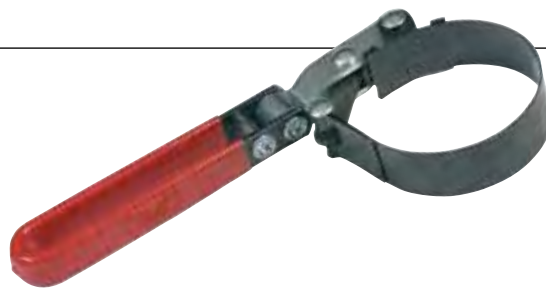




## Oil Filter Removers Swivel Handle

- Solidly constructed with a dimpled band for extra grip

Part No.	Capacity
<b>305203</b>	60–73mm
<b>305204</b>	73–85mm
<b>305205</b>	85–95mm
<b>305206</b>	95–111mm



## Oil Filter Remover Strap Type

- Heavy duty leather strap wraps around the filter and adjusts to the required size to remove and replace the filter



Part No.	Suits	Strap Width
<b>305025</b>	Filter sizes 25–160mm diameter	19mm
<b>305026</b>	Filter sizes 40–240mm diameter	25mm

### 305073

## Oil Filter Remover Webbing Strap Wrench

- Suits commercial vehicle oil filters up to 150mm diameter
- For use with 1/2" square drive
- Heavy duty strapping
- Strap width: 50mm
- Replacement strap: 305073A



### 305021

## Oil Filter Remover 3 Jaw

- Removes and replaces oil filters located in difficult access positions
- 3/8" or 1/2" square drive with hex size
- Suits oil filters 60–125mm diameter



## Oil Filter Removers 3 Leg

- Spider shaped tool suits oil filters 60–120mm diameter
- Adjustable 3 leg design
- 1/2" square drive

Part No.	Description
<b>305209</b>	Use with 1/2" Sq. Dr. or 13/16" hex drive tool 75–120mm
<b>305210</b>	Use with 1/2" Sq. Dr. or 3/4" hex drive tool 60–120mm

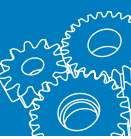


**305209**



**305210**





**305024**

**Oil Filter Remover**

- Adjustable cam type 1/2" square drive or 1" (25mm) hex drive
- Suits filter sizes 86–98mm diameter



**Oil Filter Removers**

- Steel jaws grip the filter and reduce slipping
- 3/8" square drive
- Available in two sizes
- Removes and replaces filters in confined spaces

Part No.	Suits
<b>305002</b>	Filter sizes 80–90mm diameter
<b>305022</b>	Filter sizes 60–80mm diameter



**305002**



**305022**

**Oil Filter Removal Pliers**

- Specialty pliers used for removing seized and stubborn filters
- Features slip jointed adjustable jaws with "shark tooth" security grip to prevent slippage
- Manufactured from chrome vanadium steel for superior strength and durability
- PVC dipped handles

Part No.	Suits	Overall Length
<b>305052</b>	60–90mm filters	230mm
<b>305074</b>	85–115mm filters	260mm



**305074**

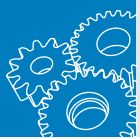
**305052**

**305027**

**Oil Filter Socket**

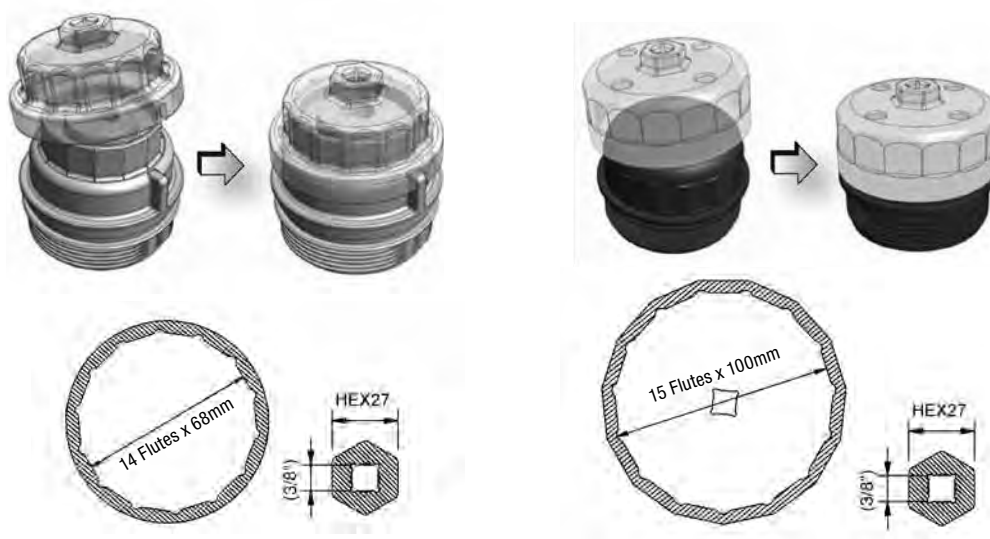
- 32mm filter socket 3/8" square drive
- Suits GM, Astra, Vectra, Zafira 2.2L vehicles





## Oil Filter Wrenches, Cup Style

- Toledo offers a comprehensive range of oil filter wrenches both individually and as part of a kit



### 305004

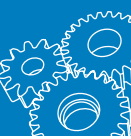
## Oil Filter Remover Set Fluted Cup Style

- Professional 15 piece set supplied in a blow mould storage case
- Feature 3/8" and 1/2" square drive and hex adaptors
- Size range: 65–100mm



## Contents

Part No	Flutes	Size	Sq. Dr.	Application
305054	14	65mm	3/8"	Daihatsu, Fiat Champ, Hastings, GM/AC, NAPA, Nissan, Puralator, Toyota, Wix
305055	14	68mm	3/8"	Ford Capri & Escort, Fram PH6607 (made in Korea only) Hastings, Mazda, Motorcraft FL816, Subaru
305056	14	65mm & 67mm	3/8"	Daihatsu, Toyota, Fram PH4386/4967/6017/6018 (made in Canada only)
305057	15	74mm & 76mm	3/8"	AC, Ford, Fram, Mercedes, Opel, Saturn, VAG
305058	14	76mm	3/8"	BMW, Champion, Champ Lee, Mercedes, Mopar, Opel, Porsche, Purolator, VAG
305059	30	76mm	3/8"	Motorcraft FL400A
305060	14	73mm	3/8"	Lexus, Toyota
305061	15	75mm & 77mm	3/8"	Ford, GM/AC, Hastings, Isuzu, Mercedes, NAPA, Opel, VAG, Wix
305062	15	80mm	3/8"	Fram, Hastings, Honda, Isuzu, Mazda, Motorcraft, Nissan, Opel, Purolator, Subaru
305063	15	80mm & 82mm	3/8"	Wix filters branded for Acura, Honda, Mazda, NAPA, Nissan, Subaru, Toyota
305064	15	90mm	3/8"	Honda Accord, Isuzu, Mistubishi, Mopar
305065	15	93mm	3/8"	Casite, Champ, Champion, Fram, GM, Hastings, Honda, Mazda, Mitsubishi, Nissan, Purolator, Porsche, Renault, Volvo, VAG, Wix
305066	36	93mm	3/8"	Ford, Motorcraft FL1A, FLA1B, FL300, FL820
305067	15	100mm	3/8"	Fram, Isuzu, Mitsubishi, Motorcraft, Wix
305068	1/2" Sq. Dr. adaptor			



**305072**

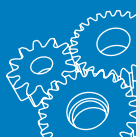
## Oil Filter Remover Set Fluted Cup Style

- Professional 9 piece set supplied in a blow mould storage case
- Feature 3/8" square drive and hex adaptors
- Size range: 27–88.8mm



### Contents

Part No.	Flutes	Size	Square Drive	Material	Surface Finish	Application
305133	14	64.5mm	3/8"	Aluminium	Chrome	Corolla, Prius
305135	14	74.2mm	3/8"	Aluminium	Chrome	BMW, Ford, Mazda, Mercedes (All models with V6 and V8), Porsche, Toyota, VAG
305137	N/A	63–83mm	3/8"	SCM440	Galvanized	Universal oil filter wrench: 63-83mm
305136	16	86.6mm	3/8"	Aluminium	Chrome	BMW - 335i 3.0L Twin Turbo BMW - 535i 3.0L Twin Turbo BMW - BMW 3 Series (E90) BMW - X6 3.0L Twin Turbo Volvo - All models (1999 - 2006) (exc. 2005 40 & 50 Series)
N/A	14	64.5mm	3/8"	Aluminium	Chrome	Toyota 2007-2008 V6 (2006) all vehicles Lexus (2007) - ES350, GS350, GS450h, LS460, RX350 (2008) - LS600h L
305134	15	88.8mm	3/8"	Aluminium	Chrome	Hyundai, Kia
305104	6	27mm	3/8"	S45C	Nickel-plating	Mercedes and Smart Car
305106	6	32mm	3/8"	S45C	Nickel-plating	GM - Opel / Vauxhall 4 cyl GM 2.2 litre Ecotech 10XE, X12XE, Y17DT, Y17DTL engines Mercedes HGV'S e.g. OM364, OM366 engines
305107	6	36mm	3/8"	S45C	Nickel-plating	Mercedes Diesel Engines OM604, OM605, OM606 BMW engines M52 6-cyl, M60 8 cyl, M70 12-cyl Mini One /Cooper/ Cooper S Ford 6.0 litre diesel engines (predominantly used in pick-ups) VW VR6 engine



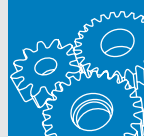
## Cup Style Oil Filter Wrenches Individual

- Fluted cup oil filter wrenches for the removal and installation of oil filters used in modern engine applications
- Suitable for use on popular petrol or diesel filters used in passenger, light commercial and heavy duty applications
- Fluted cup design allows for gripping on corrugated end of the filter, reducing the possibility of filter damage during removal and installation
- Manufactured from high quality alloy steel for strength and durability
- Feature 3/8" and 1/2" square drive and hex adaptors
- Various flute designs from 6–45 flutes with 1 or 2 step
- For use up to 115Nm (85Ft.lbs)
- Size range: 24–108mm
- Also available as sets of popular sizes
- Attractively packaged in hanging blister



Part No.	Size	Flutes
<b>305103</b>	24mm	6
<b>305104</b>	27mm with Hex Adaptor	6
<b>305105</b>	30mm	6
<b>305106</b>	32mm with Hex Adaptor	6
<b>305107</b>	36mm with Hex Adaptor	6
<b>305108</b>	38mm	6
<b>305109</b>	64mm	14
<b>305133</b>	64.5mm	14
<b>305054</b>	65mm	14
<b>305056</b>	65 & 67mm	14
<b>305111</b>	66mm	6
<b>305112</b>	66.5mm	14
<b>305055</b>	68mm	14
<b>305060</b>	73mm	14
<b>305113</b>	74mm with Hex Adaptor	15
<b>305135</b>	74.2mm	14
<b>305057</b>	74 & 76mm	15
<b>305061</b>	75 & 77mm	15
<b>305114</b>	75.6mm with Hex Adaptor	14
<b>305115</b>	76mm	12
<b>305116</b>	76mm with Hex Adaptor	12
<b>305117</b>	76mm	8
<b>305058</b>	74 & 76mm	14

Part No.	Size	Flutes
<b>305059</b>	76mm	30
<b>305118</b>	76.5mm	14
<b>305119</b>	78mm	15
<b>305062</b>	80mm	15
<b>305063</b>	80 & 82 mm	15
<b>305120</b>	86mm	18
<b>305121</b>	86mm	16
<b>305122</b>	86mm with Hex Adaptor	16
<b>305136</b>	86.6mm	16
<b>305134</b>	88.8mm	15
<b>305123</b>	88.5mm	15
<b>305064</b>	90mm	15
<b>305124</b>	92mm	10
<b>305125</b>	93mm	45
<b>305065</b>	93mm	15
<b>305126</b>	93mm with Hex Adaptor	15
<b>305066</b>	93mm	36
<b>305127</b>	95mm	15
<b>305128</b>	96mm	18
<b>305129</b>	99mm	15
<b>305067</b>	100mm	15
<b>305130</b>	106mm	15
<b>305131</b>	108mm	15
<b>305132</b>	108mm	18
<b>305137</b>	63-83mm Adjustable	–

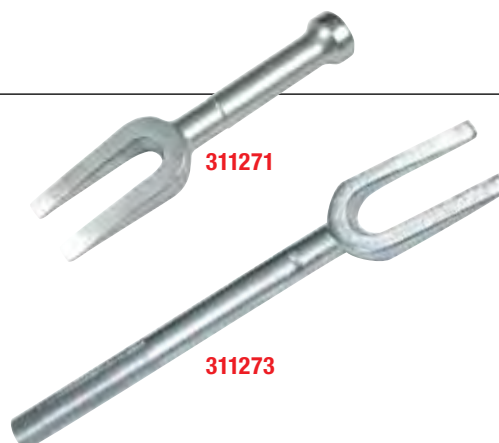


## SUSPENSION & STEERING

### Ball Joint Separators Fork

- For simple and effective ball joint separation
- Hammer strike design allows easy ball joint separation
- Manufactured from drop forged steel to maximise durability and tool life

Part No.	Fork Opening	Overall Length
<b>311271</b>	17mm	200mm
<b>311273</b>	24mm	300mm



#### **311274**

### Ball Joint Separator

- For simple and effective removal of ball joints
- Effective use in limited working space or when control arm does not permit use of fork impact type spreader
- Body and bolt manufactured from drop forged steel ensuring durability and service life
- Overall length: 135mm
- Fork opening: 19mm
- Reach: 38mm
- Jaw capacity: 15–48mm



#### **311275**

### Ball Joint Separator

- For simple and effective removal of ball joints
- Versatile two-stage design with quick-release pin allows for greater jaw capacity for use on both passenger vehicles and light trucks
- Durable drop forged steel construction ensures long service life
- Overall length: 160mm
- Fork Opening: 22mm
- Reach: 44mm
- Jaw capacity: 1st stage: 0–30mm, 2nd stage: 12–56mm



#### **311276**

### Ball Joint Separator

- Designed for the removal of ball joints where working space is limited
- Features an inbuilt handle and forcing screw with ball bearing tip
- Body and forcing screw constructed from drop forged steel for maximum durability
- Included are two 90mm side braces to extend jaw capacity
- Overall length: 265mm
- Fork opening: 17mm
- Reach: 30mm
- Jaw capacity: Std: 35mm, Ext: 70mm





**311012**

## Ball Joint Separator Kit

- For quick change ball joint removal
- Enables the operator to select from the five different sizes of jaw forks
- Sizes included (jaw openings): 20, 22, 24, 27, 30 (mm)
- Thrust screw length: 100mm
- Pivot rod length: 125mm
- Professional set supplied in a blow mould storage case



**311000**

## Ball Joint Separator Kit Hydraulic & Mechanical

- For separating commercial vehicle ball joints
- Removes ball joints easily where space prevents use of direct action method
- Strengthened fork and lever allows for greater force to be applied
- Mechanical or hydraulic capability (10 tonne ram)
- Manufactured from alloy steel SCM 440
- Jaw opening: 70mm (Max.)
- Jaw width: 36mm
- Professional set supplied in a blow mould storage case

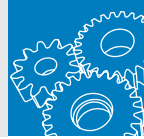


**311011**

## Ball Joint Separator Kit Hydraulic & Mechanical Variable Size

- For separating track rod ends, anti roll bar mountings, ball joints etc.
- Essential kit for applications with limited space such as BMW, Ford, GM (Holden), Mercedes Benz (W170, W202, W210, W220), Mitsubishi, VAG
- Features step down thread adaptor to facilitate hydraulic or mechanical operation (10 tonne ram)
- Jaw openings: 30, 34, 40 (mm)
- Thrust screw length: 50, 100 (mm)
- Pivot rod length: 125mm
- Professional set supplied in a blow mould storage case





**311282**

## Ball Joint, Tie Rod, Pitman Arm Set

- Comprehensive kit designed for the trouble free removal of tie rod ends, ball joints and pitman arms
- All forks feature a female thread to interchange with included manual hammer and air hammer type handles
- Manufactured from drop forged alloy steel to maximise strength and durability
- 5 piece set

### Contents

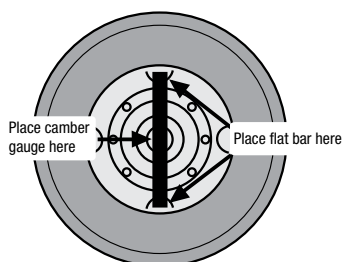
Description	Fork Opening	Overall Length
Fork	18mm (11/16")	125mm
Fork	24mm (15/16")	125mm
Fork	29mm (1 1/8")	125mm
Handle (Hammer)	-	200mm
Handle (Air-hammer)	-	180mm



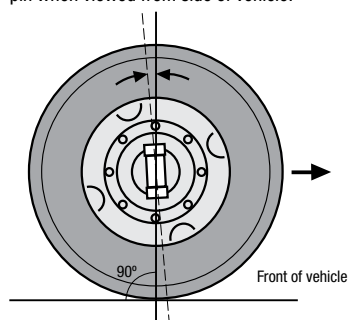
**311289**

## Camber Gauge Magnetic

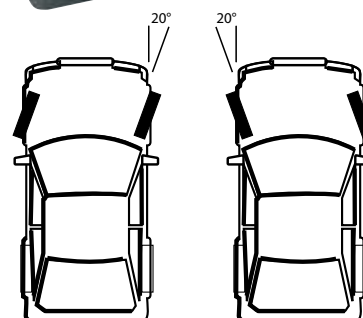
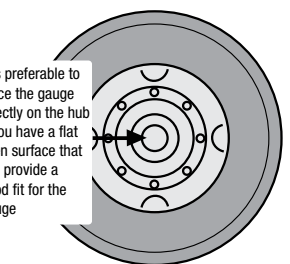
- Innovated measurement device designed for simple and accurate measurement of camber in passenger and light commercial vehicles
- Features two portable, magnetic, camber bubble gauges to attach to the wheel hub, spindle or rotor
- Overall length: 123mm
- Operating range:  $\pm 3^\circ$
- User manual included
- 2 piece set



**CASTER ANGLE** is the angle between the vertical and the inclination of the king pin when viewed from side of vehicle.



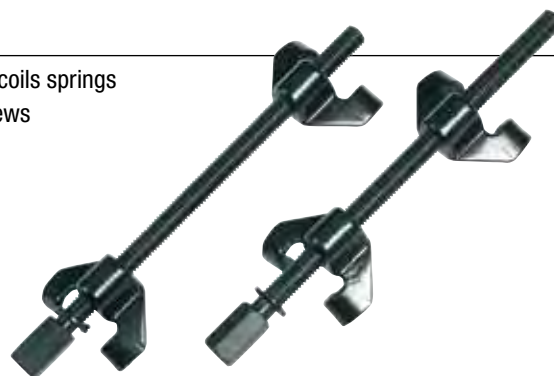
It is preferable to place the gauge directly on the hub if you have a flat even surface that will provide a good fit for the gauge

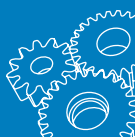


**311284**

## Coil Spring Compressor Professional

- Specifically designed for safe and effective compression of automotive coils springs
- Manufactured from drop forged carbon steel with heat treated lead screws for optimum durability and performance
- Features wrap-around jaws to ensure safety
- Suitable for passenger vehicles and light commercials
- Overall length: 300mm
- Operating range: 300mm





**311286**

## Coil Spring Compressor Kit Extra Long

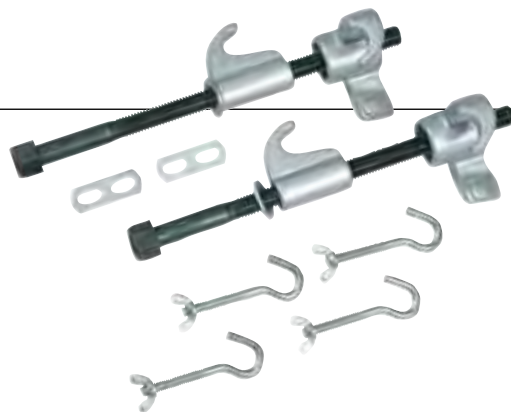
- Versatile kit designed to compress coil springs of varying lengths
- Features ratchet handle, 150mm extension and small jar of lubricant
- Included are 300mm and 400mm lead screw sets to support various length coil springs
- Suitable for passenger vehicles and light commercials
- Professional kit supplied in a sturdy storage case



**311285**

## Coil Spring Compressor Macpherson

- Specialist tool specifically designed for the compression of coil springs on Macpherson strut type suspension
- Features double ended jaws with attachable security hooks for added safety and control
- Suitable for passenger vehicles and light commercials
- Overall length: 300mm
- Operating capacity: 300mm



**311002**

## Coil Spring Compressor Macpherson

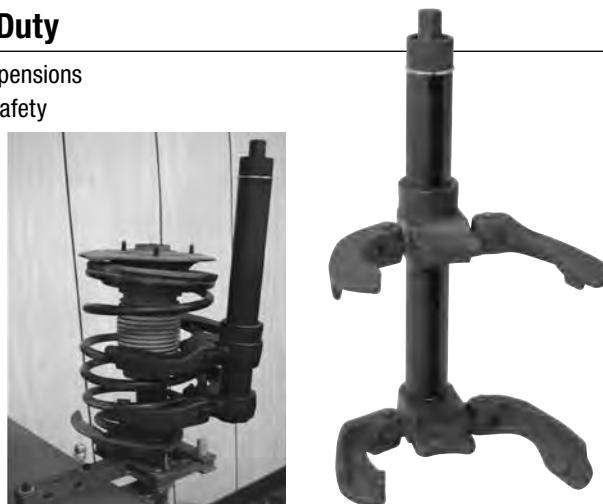
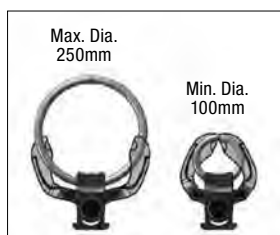
- Comprehensive kit used to compress coil springs on Macpherson type suspension
- Includes three interchangeable shoe sizes to support various coil spring diameters
- Features a heavy duty, shielded screw body for optimal strength and safety
- Overall length: 450mm
- Operating capacity: 65–215mm
- Professional set supplied in a blow mould storage case



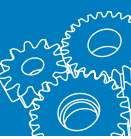
**311016**

## Coil Spring Compressor Macpherson Heavy Duty

- Multi application tool designed specifically for use on Macpherson suspensions
- Features a heavy duty, shielded screw body for optimal strength and safety
- Fully adjustable and very safe
- Max load: 1450Kg. Ft.
- Overall length: 450mm
- Operating capacity: 100–250mm
- Not for impact or power tool use
- User manual included



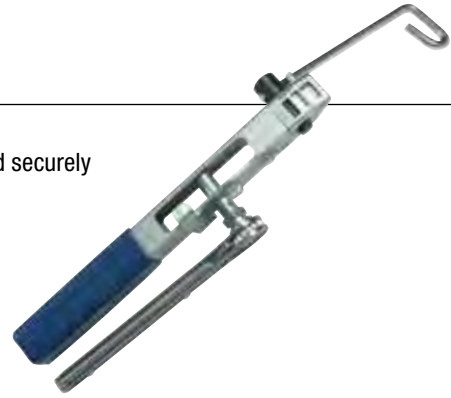




**311288**

## CV Boot Clamp Installer

- Specialist tool designed for installing low-profile CV boot clamps
- Features ratcheting operation and inbuilt cutter to tension clamps quickly and securely
- Suitable for most modern vehicle applications
- Overall length: 200mm



**311008**

## CV Boot Clamp Installer

- For simple and effective installation of CV boot clamps
- Features a knurled handle for secure grip
- Suitable for most modern vehicle applications
- Overall length: 210mm



**311279**

## Pitman Arm Puller

- Specialist tool designed for the removal of pitman and idler arms on vehicles fitted with linkage steering systems
- Manufactured from drop forged steel ensures durability and long service life
- Ideal for passenger vehicles and light commercials
- Jaw opening: 33mm (1<sup>15</sup>/<sub>16</sub>"
- Depth: 60mm (2<sup>1</sup>/<sub>2</sub>"

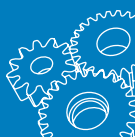


**311280**

## Pitman Arm & Tie Rod Puller

- For simple and effective removal of pitman arms, idler arms, and tie rod ends
- Features specially shaped, fully adjustable jaws with clamping bolts to prevent slippage
- Constructed from drop forged steel to maximise durability and service life
- Overall length: 150mm
- Jaw opening: 65mm
- Depth: 85mm





**311281**

## Pitman Arm & Tie Rod Puller

- For the simple and trouble free removal of tie rods and pitman arms
- Manufactured from drop forged steel ensures durability and long service life
- Ideal for compact passenger vehicles
- Overall length: 115mm
- Jaw opening: 27mm
- Depth: 44mm



**311300**

## Power Steering Pressure Testing Kit

- Comprehensive kit used to assist in the diagnosis of faults in hydraulic power steering systems
- Features a premium fluid filled gauge and 13 uniquely sized adaptors to suit most modern power steering systems
- Suitable for power steering pumps, racks, boxes and lines
- Operator manual included
- Professional kit supplied in a blow mould storage case



### Contents

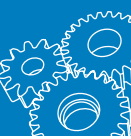
Part No.	Ref. No.	Description	Length	Spanner Size
311314		Gauge & hose assembly 1/8" NPT x 5/8" SAE	460mm	12 x 17mm
311301	1	Connector male-male 7/16" SAE x 3/8" BSP	39mm	16mm
	2	Connector male-male 7/16" SAE x 5/8" BSP	39mm	16mm
	3	Connector male-male 7/16" SAE x 18mm	44mm	19mm
	4	Connector male-male 1/8" NPT x 5/8" SAE	32mm	16mm
	5	Connector male-male 7/16" SAE x 5/8" SAE	38mm	16mm
	6	Connector male-male 7/16" SAE x 1/8" NPT	27mm	11mm
	7	Connector male-male 7/16" SAE x 11mm (24TPI)	26mm	11mm
311308	A	Connector male-female 1/8" NPT x 3/8" BSP	38mm	22mm
	B	Connector male-female 1/8" NPT x 5/8" SAE	38mm	22mm
	C	Connector male-female 1/8" NPT x 18mm	38mm	22mm
	D	Connector male-female 7/16" SAE x 5/8" SAE	31mm	21mm
	E	Connector male-female 1/8" NPT x 1/8" NPT	19mm	13mm
	F	Connector male-female 1/8" NPT x 5/8" SAE	21mm	19mm

**311013**

## Steering Knuckle Spreader Tool Kit Universal

- Spreads the steering knuckle to enable the installation and removal of shock absorbers
- Spreads lower ball joint clamp preventing damage to aluminium or cast iron steering hubs that may be caused by using other removal methods
- Adjustable and suitable for steering knuckles with either a centralised or non-centralised slot
- Made from chrome molybdenum for added strength and durability
- Suits Audi, BMW, Citroen, Volkswagen Golf & Passat, Ford, Skoda, Seat, Renault, Peugeot and most Japanese vehicles
- Guide sizes: 8, 10, 12.5 (mm)

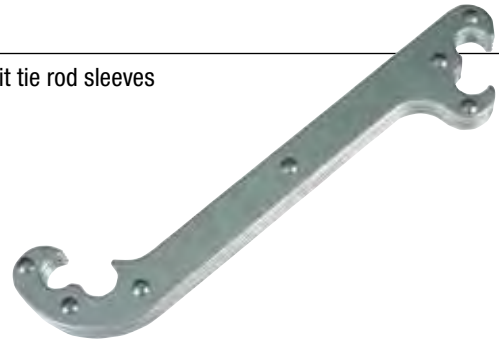




**311270**

### Tie Rod Tool Split Tie Rod Sleeves

- Innovative double-ended tool specifically designed for the adjustment of split tie rod sleeves
- Fits most popular passenger vehicles and trucks with tie rod sleeves
- Overall Length: 200mm



**311278**

### Tie Rod End Removal Tool Universal

- Used for simple and effective separation of tie rod ends
- Body and bolt manufactured from durable drop forged steel to maximise service life
- Suitable for use on most front wheel drive vehicle applications
- Tool inserts between the tie rod end spindle and the tie rod
- When the forcing screw is tightened, pressure exerted on the spindle causes it to pull free of the tie rod
- May be used with tie rod ends in drag link and steering arm applications
- Fork opening: 17mm
- Reach: 30mm



**311001**

### Tie Rod Puller

- For simple and damage free separation of tie rod ends, anti roll bars or ball joints
- Body and bolt manufactured from durable drop forged steel to maximise service life
- Forcing screw features ball bearing tip
- Suitable for use on SUV, light commercial and heavy duty vehicle applications
- Fork opening: 46mm
- Reach: 100mm

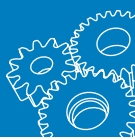


**311277**

### Tie Rod Puller Outer

- External puller designed specifically for automotive use
- Manufactured from drop forged alloy steel to ensure strength and long tool life
- Suitable for tie rod ends, ball joints, bearings, gears and pulleys
- Overall length: 125mm
- Spread: 100mm
- Reach: 60mm

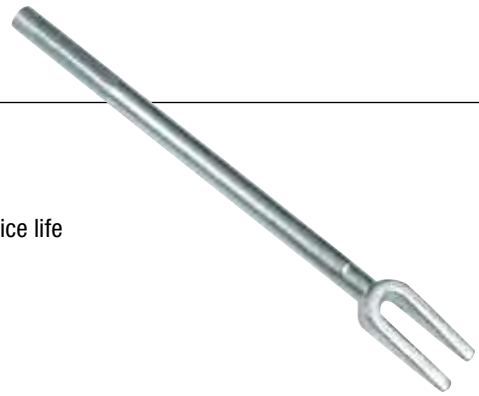




**311272**

## Tie Rod Spreader

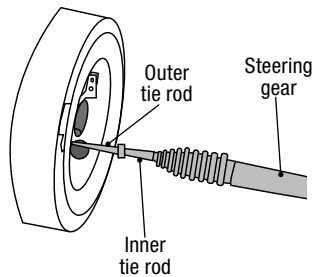
- For simple and effective separation of tie rod ends
- Hammer strike design allows easy tie rod end separation
- Extended knurled handle to maximise leverage and grip
- One piece tempered, drop forged steel construction ensures durability and service life
- Overall length: 400mm
- Fork opening: 18mm



**311287**

## Inner Tie Rod Tool Set

- Specialty kit designed for inner tie rods which are inaccessible to adjust
- Long socket body is compatible with seven supplied sizes of open end drivers
- The inner tie rod is easily removed and replaced by slipping the socket over the tie rod end and connecting it to the open end driver
- Sizes include: 14, 17, 33.6 (mm) and 1 3/16", 1 1/4", 1 5/16", 1 7/16"
- Professional kit supplied in a blow mould storage case



**309100**

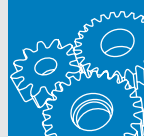
## Digital Wheel Alignment Kit

- Portable one man kit for simple and accurate measuring of camber, caster, toe and KPI measurements
- Suits wheel sizes 10"–20"
- User manual included. Provides a simple step by step guide to using this kit

### Contents

Description	Qty	Description	Qty
Wheel clamps	2	Alarmed angle gauge (AAG)	1
Foot brake rods	2	Digital angle gauge (DAG)	1
Triangular base	1	Charger & cable	1
Stand upright rod	1	Levelling plate	1
Tape measure	1		





## TYRE & WHEEL

**309500**

### Torque Extension Bar Set

- Comprehensive set specifically designed to torque wheel nuts and bolts to the correct tension as specified by the vehicle manufacturer
- 1/2" male square drive enables attachment of any size impact socket for complete versatility
- 1/2" female square drive for use with impact wrench
- Colour coded extension bars designed with pretensioned torque rating, for quick reference to size
- Overall length per bar: 195mm
- 10 piece set

#### Contents

Part No.	Description
309501	Torque bar 90Nm (Green)
309502	Torque bar 100Nm (Black)
309503	Torque bar 110Nm (Yellow)
309504	Torque bar 120Nm (Red)
309505	Torque bar 135Nm (Dark Blue)
309506	Torque bar 150Nm (Orange)
309507	Torque bar 160Nm (Grey)
309508	Torque bar 175Nm (Brown)
309509	Torque bar 190Nm (White)
309510	Torque bar 200Nm (Pale Blue)

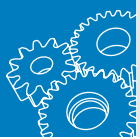


### Tyre Levers

- Professional quality tyre levers manufactured from hardened and tempered drop forged chrome vanadium steel
- For removal and installation of tyres on to rims
- Sizes available 300–600mm

Part No.	Overall Length
<b>309040</b>	300mm
<b>309033</b>	400mm
<b>309034</b>	500mm
<b>309035</b>	600mm

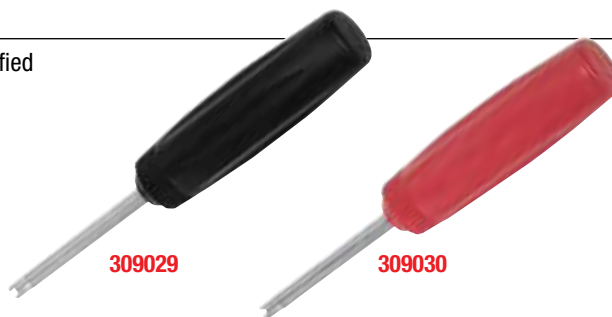




## Tyre Valve Core Torque Tools

- Specifically designed to adjust the tyre valve core to the correct specified torque as required in tyre pressure monitoring systems (TPMS)
- Moulded handle allows for a secure grip

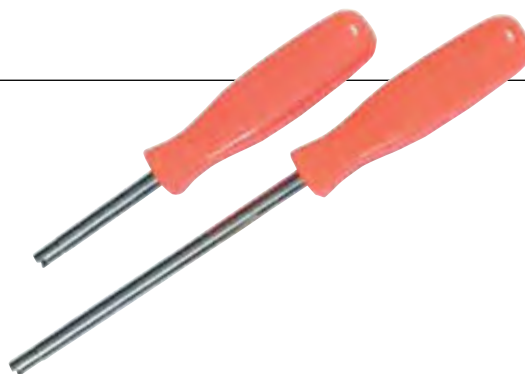
Part No.	Description	Overall Length
<b>309029</b>	45 Ncm ( $\pm$ 6%) 4 In.Lbs. torque limit	120mm
<b>309030</b>	25 Ncm ( $\pm$ 6%) 2 In.Lbs. torque limit	120mm



### 309246

## Tyre Valve Remover

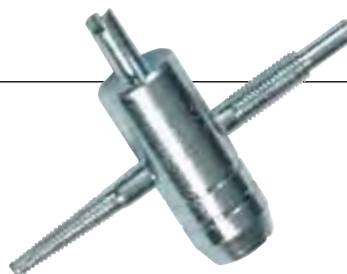
- Used for the removal and installation of tyre valve cores
- Moulded plastic handles allow for a secure grip
- Regular reach unit for passenger vehicles and motorcycles – 110mm long
- Long reach unit ideal for trucks – 155mm long
- 2 piece set



### 309245

## Tyre Valve Remover 4 Way

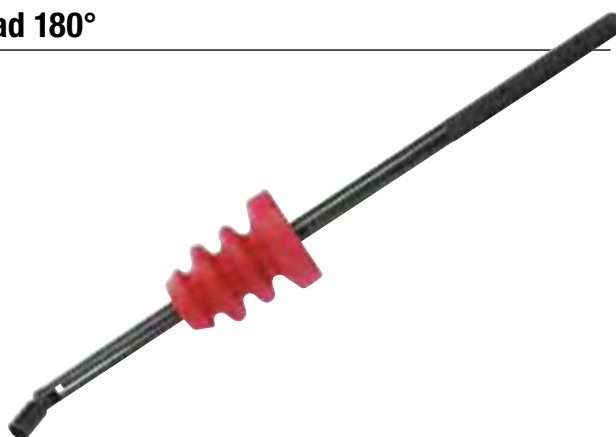
- Designed for the removal and installation of tyre valves and valve cores on both tubed and tubeless tyres
- Tapped ends repair both inner and outer valve threads
- High grade tempered steel construction

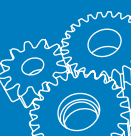


### 309000

## Tyre Valve Remover & Installer Flexible Head 180°

- Rubber bumper slides up and down the tool shaft in order to protect wheel rims from possible damage during valve removal or installation
- Ideal for use on tyres with snap-in valves
- Thread size: 5/16" x 32T

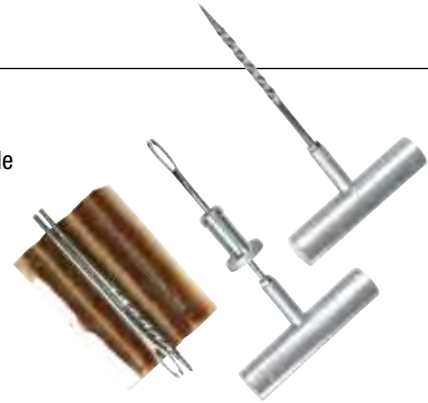




**309247**

## Tubeless Tyre Repair Kit

- Designed for use when carrying out puncture repairs on tubeless tyres
- Large, knurled T-handle for superior grip and durability
- 5 piece kit includes replacement eye hook and tyre reamer which screw into T-handle
- Tyre repair adhesive plugs included
- Overall length: 165mm
- Handle: 95mm



**309101**

## Tyre Pressure Gauge Digital

- Simple and accurate digital tyre pressure gauge
- Measures tyre pressure
- Features LCD backlight and LED light for work in the dark
- Auto shut off function (25 seconds)
- Dual powered via solar panel and 3V lithium coin cell battery
  - Measuring range: 5 to 150 PSI
  - Accuracy: 5 to 100 PSI:  $\pm 1$  PSI, 101 to 150 PSI:  $\pm 2$  PSI
  - Pressure units: PSI, Bar, kPa, kg/cm<sup>2</sup> (optional)
  - Resolution: 0.1 PSI, 0.01 Bar, 1 kPa/0.01kg, cm<sup>2</sup>



**309037**

## Nut Cracker Set Torque Multiplying

- Professional tool for removing tight and stubborn wheel nuts
- Uses reduction gears to create a multiplication ratio of 56:1
- Generates a significant amount of targeted force to combat even the toughest wheel nut removal jobs
- Provides progressive build up of force rather than intermittent shock impact via an impact wrench
- Great time, effort and energy saver
- Maximum torque output: 1,200Nm
- Includes seven 1" square drive 6-point hex sockets
- Additional socket sizes available
- 10 piece set
- User manual included



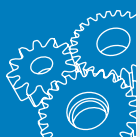
### Contents

Description	Size
Torque Multiplier	4.5Kg
Rotation Handle	With ergonomic handle
Extension Bar	220mm
Impact Sockets (1" Sq. Dr.)	6 point hex: 24, 27, 30, 32, 33, 36, 38mm

### Additional Sockets

Part No.	Description	Size
30903724	Socket	24mm
30903727	Socket	27mm
30903730	Socket	30mm
30903732	Socket	32mm
30903733	Socket	33mm
30903735*	Socket	35mm
30903736	Socket	36mm
30903738	Socket	38mm
30903741*	Socket	41mm

\* Not included in 309037 kit



**311017**

## Wheel Hub Nut Tool Set 3/4" Sq. Dr.

- Suits front wheel hub fasteners on later model vehicles requiring longer sockets for hard to reach hub nuts
- Bi-Hex deep impact sockets are 120mm long with 91mm clearance
- Sizes are 14, 17, 19mm (Cr-Moly) 24, 27, 30, 32, 36mm (Cr-Van)
- Hardened, phosphate finish
- Professional 8 piece set supplied in a blow mould storage case



**321009**

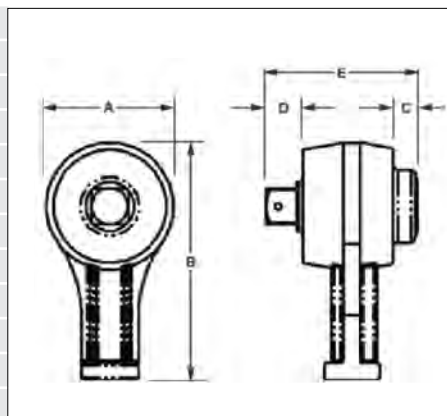
## Torque Multiplier Kit

- Professional tool designed for use in applications where a higher than otherwise achievable torque rating is required
- Multiplication ratio of 3 to 1 with planetary gear design
- Ideal for breaking difficult or frozen fastener applications
- Head assembly features
  - 3/4" square drive (male) for use with sockets
  - 1/2" square drive (female) input socket for use with torque wrench, ratchet, breaker bar or power drive etc.
- Extension bar and stabiliser also included
- User manual included



### Specifications

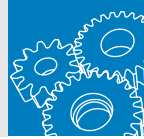
Multiplication Ratio	3:1
Input Square	1/2" Sq. Dr.
Max. Input	500Nm (365 Ft. Lbs)
Output Square	3/4" Sq. Dr.
Max. Output	1,500Nm (1,100 Ft. Lbs)
Accuracy	+/- 4%
Dimensions	A: 73mm
	B: 127mm
	C: 10mm
	D: 25mm
	E: 83mm
Weight	1,600g



### CAUTION

- DO NOT EXCEED THE RATED CAPACITY. Excessive input force may result in tool failure and cause a sudden release of the input drive
- This tool is not suitable for use with input forces from impact tools. High shock loads will cause damage to the tool





## Wheel Nut Socket Sets

- Toledo deep impact sockets are specifically designed for strength and versatility
- Removable protective plastic outer shell protects against damage to alloy wheels
- Thin wall and deep hollow construction purposely designed to suit standard, alloy and performance wheels
- 1/2" square drive for use with impact wrench
- Colour coded for quick reference to size

### Wheel Nut Socket Sets Standard



**309300 Metric (3 Piece)**

Part No.	Description
309301	Socket 17mm
309302	Socket 19mm (3/4")
309303	Socket 21mm



**309400 SAE (5 Piece)**

Part No.	Description
309401	Socket 3/4"
309402	Socket 13/16"
309403	Socket 7/8"
309404	Socket 1"
309405	Socket 1 1/16"



**309350 Metric (7 Piece)**

Part No.	Description
309301	Socket 17mm
309302	Socket 19mm (3/4")
309303	Socket 21mm
309304	Socket 22mm
309305	Socket 23mm
309306	Socket 24mm
309307	Socket 27mm



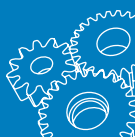
**309450 Metric & SAE (7 Piece)**

Part No.	Description
309301	Socket 17mm
309302	Socket 19mm (3/4")
309303	Socket 21mm
309402	Socket 13/16"
309403	Socket 7/8"
309404	Socket 1"
309405	Socket 1 1/16"



**309036 Metric (5 Piece)**

Part No.	Description
N/A	Socket 15mm
309301	Socket 17mm
309302	Socket 19mm (3/4")
309303	Socket 21mm
309304	Socket 22mm



**309032**

## Wheel Nut Socket Set Long

- Three piece set includes sizes 17, 19, 21 (mm)
- Each size 150mm long
- 1/2" square drive



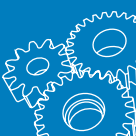
## Wheel Bearing Lock Nut Sockets

- Heavy duty wheel bearing lock nut sockets
- For the removal and installation of wheel bearing locking nuts
- Extra deep clearance and thin wall design to suit most applications
- Manufactured from high strength steel tube
- 3/4" square drive



Part No.	Socket Type	Size
<b>309001</b>	Hexagon 6 point	2 3/32"
<b>309014</b>	Hexagon 6 point	2 1/4"
<b>309006</b>	Hexagon 6 point	2 3/8"
<b>309007</b>	Hexagon Rounded 6 point	2 3/8"
<b>309023</b>	Octagon 8 point	2 3/8"
<b>309015</b>	Hexagon 6 point	2 1/2"
<b>309002</b>	Hexagon 6 point	2 9/16"
<b>309021</b>	Hexagon Rounded 6 point	2 9/16"
<b>309016</b>	Hexagon 6 point	2 5/8"
<b>309017</b>	Hexagon 6 point	2 3/4"
<b>309018</b>	Octagon Rounded 8 point	2 3/4"
<b>309025</b>	Hexagon 6 point	2 7/8"
<b>309024</b>	Hexagon 6 point	3"
<b>309003</b>	Hexagon 6 point	3 1/4"

Part No.	Socket Type	Size
<b>309026</b>	Octagon 8 point	3 1/4"
<b>309004</b>	Hexagon 6 point	3 1/2"
<b>309005</b>	Octagon 8 point	3 1/2"
<b>309019</b>	Octagon 8 point	3 3/4"
<b>309027</b>	Octagon 8 point	3 13/16"
<b>309020</b>	Hexagon 6 point	3 7/8"
<b>309022</b>	Octagon 8 point	3 7/8"
<b>309008</b>	Hexagon 6 point	4"
<b>309009</b>	Hexagon 6 point	4 1/8"
<b>309010</b>	Hexagon 6 point	4 3/8"
<b>309011</b>	Octagon 8 point	4 3/8"
<b>309038</b>	Octagon 8 point	4 13/16"
<b>309012</b>	Hexagon 6 point	4 7/8"
<b>309013</b>	Octagon 8 point	4 7/8"



**301260**

**Wheel Bearing Kit, FWD Hub Service**

- Comprehensive kit specifically designed for replacement of front wheel bearings on front wheel drive vehicles
- Allows removal and replacement of the front wheel bearings without removing the steering knuckle or strut assembly
- Eliminates the need for front end wheel alignment after bearing replacement
- Suitable for most common front wheel drive vehicles
- Features universal bearing and seal driver tools manufactured from steel for strength and durability
- Size range 55.5–90mm, see contents
- Professional quality 13 piece kit supplied in a blow moulded case



**Contents**

Part No.	Description	Part No.	Description
301273	55.5mm (adaptor)	301266	78mm (adaptor)
301272	59mm (adaptor)	301265	84mm (adaptor)
301271	62mm (adaptor)	301264	76mm (cup)
301270	65mm (adaptor)	301263	85mm (cup)
301269	66mm (adaptor)	301262	90mm (cup)
301268	71.5mm (adaptor)	301261	Main screw
301267	73mm (adaptor)		

**309550**

**Wheel Bearing Kit, FWD Hub Service**

- Comprehensive kit specifically designed for replacement of front wheel bearings on front wheel drive vehicles
- Allows removal and replacement of the front wheel bearings without removing the steering knuckle or strut assembly
- Eliminates the need for front end wheel alignment after bearing replacement
- Suitable for most common front wheel drive vehicles
- Features universal bearing and seal driver tools manufactured from steel for strength and durability
- Size range 50–88mm
- Professional quality 24 piece kit supplied in a blow mould case



Drift Sizes
50mm
55mm
60mm
64mm
67mm
70mm
72mm
74mm
75mm
78mm
82mm
84mm
88mm



**311014**

## Wheel Bearing Lock Nut Wrench Set Adjustable

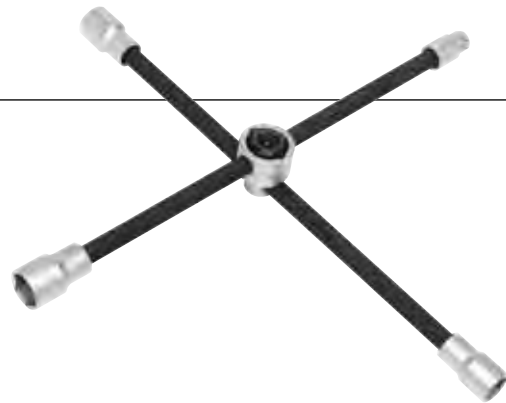
- Adjustable wrench tool for the removal of wheel bearing lock nuts
- Adjustable jaws to suit both 6 point and 8 point wheel bearing lock nuts from 45mm (1.3/4") to 145mm (5.5/8")
- Locking mechanism ensures jaws are rigid to prevent slipping on narrow lock nuts
- Includes three pairs of pins for use on pin type locknuts
- Pin diameters: 6 x 43mm x 2 piece, 8 x 43mm x 2 piece, 10 x 43mm x 2 piece
- Universal tool great for Australia's 4WDs
- Max torque: 500 ft. lb.
- Capacity (hexagonal): 49–135mm
- Capacity (octagonal): 49–143mm



**309031**

## Wheel Wrench Foldable Four Way

- Convenient foldable wheel brace designed to remove wheel nuts with little effort and pack away for easy storage
- Suits most common sizes 17mm, 19mm, 21mm and 1/2" square drive attachment to fit any size socket
- Manufactured from alloy drop forged steel to ensure long service life
- Overall length (fully extended): 400mm



**309248**

## Wheel Wrench Universal Extension

- Innovative and versatile telescopic wrench used for the removal and installation of wheel nuts
- 530mm (21") extended length provides generous leverage for removal of stubborn or rusted wheel nuts and bolts
- 340mm retracted length enables trouble free compact storage
- Tool supplied with two reversible sockets to suit most common sizes 17, 19, 21, 23 (mm)

